

Auglaize County Road Records

Road Name: Buckland-Holden Rd.
Road Number: 190

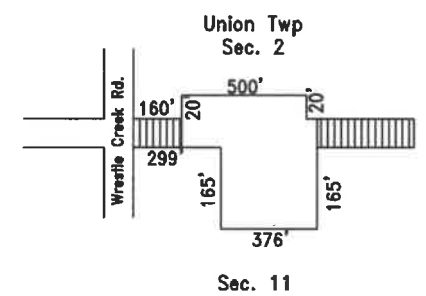
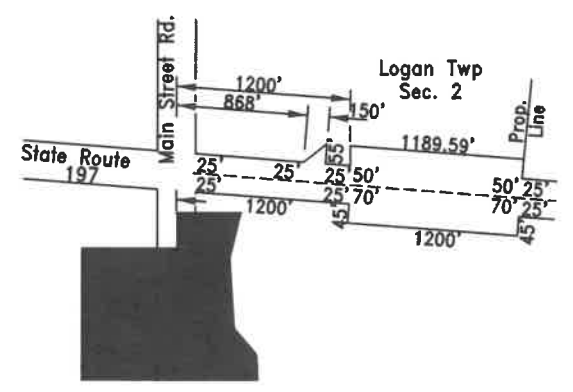
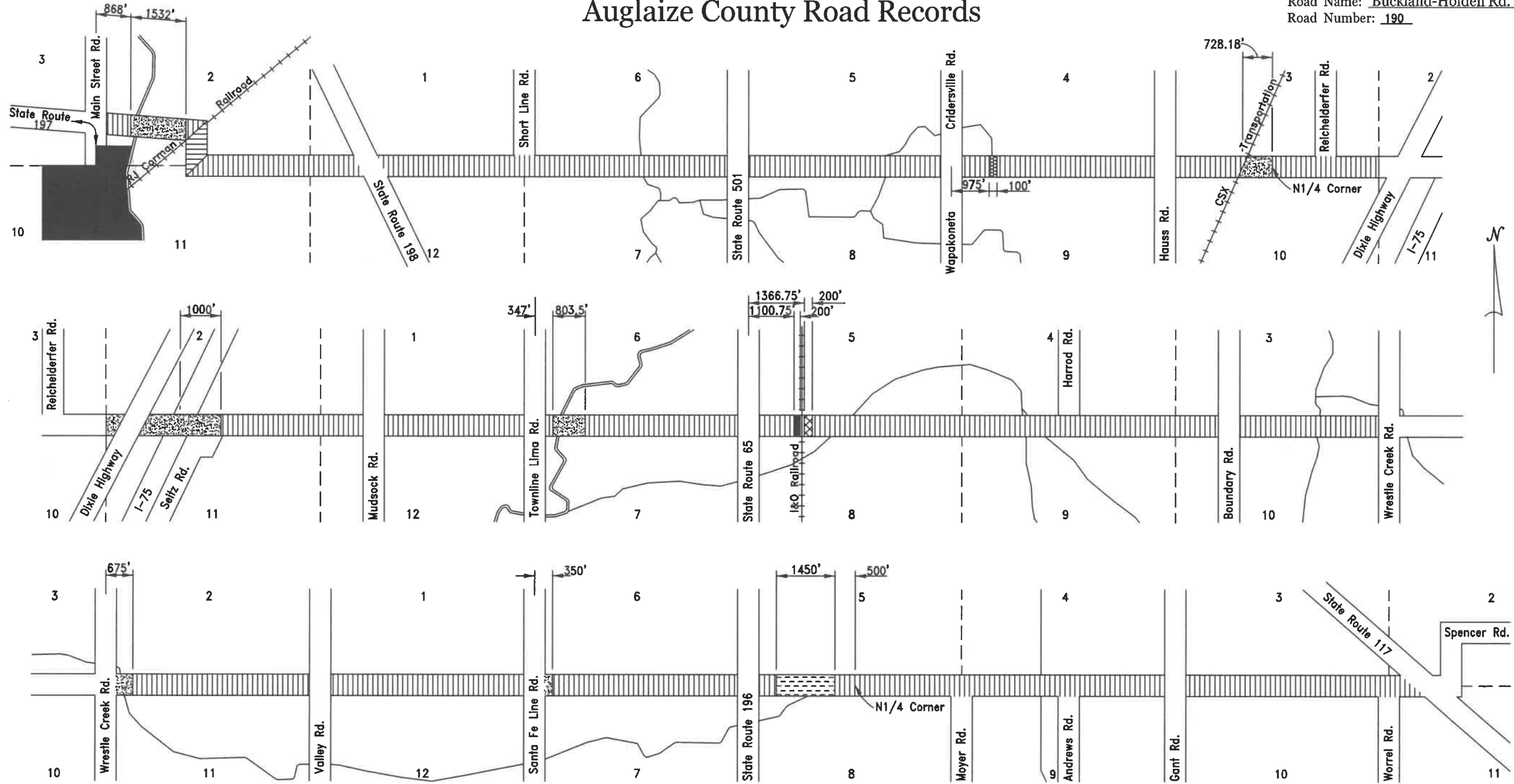
Petitioner(s)	Year Viewed	Year Granted	Origin of Road				Road Improvements						Width	General Location of Road By Road Entries		
			BOCC Journal		Road Journal		BOCC Journal		Improv. Journal		Deed Volume				Plat Book	
			Volume	Page	Volume	Page	Volume	Page	Volume	Page	Volume	Page			Volume	Page
	1837				All. Co - 2 Aug. Co - 1	14 24								60'	State Route 198 to Dixie Highway	
	1844				All. Co - 2 Aug. Co - 1	151 92								60'	State Route 198 to West Sec. line Sec. 2, T5S, R7E	
D. Kent	1849	1850	1	76										40'	Dixie Highway to SE corner Sec. 6, T5S, R7E	
D. Dawson	1851	1852	1	151	3	103								40'	SW corner Sec. 2, T5S, R7E to State Route 117	
J. Watt	1854	1854	1	234	3	158								40'	SE corner Sec. 6, T5S, R7E to SW corner Sec. 2, said Township	
W. Delashment	1871	1871	2	450	3	456								30'	SE corner Sec. 1, T5S, R6E to Dixie Highway	
J. Baumgardner	1879	1880	4	87	3A	223								40'	NW corner Sec. 7, T5S, R7E to NE corner said Sec.	
J. Butcher	1880	1880					4	111	2	58				50'	(Kossuth Pike) State Route 198 to West Sec. line Sec. 2, T5S, R5E	
C. Stiles	1882	1882					4	364	3	146				50'	(Cumberland Pike) SW corner Sec. 5, T5S, R7E to SE corner Sec. 3, said Township	
J. Lhamon	1882	1882					4	388						50'	(Virginia Creek Pike) SE corner Sec. 6, T5S, R8E to SE corner Sec. 3, T5S, R7E	
J. Meyers	1898	1898					9	56	7	533				45'	(Moyer Pike) NW corner Sec. 8, T5S, R8E to State Route 117	
Auglaize County	1938	1938									MR 3	453			330' ± East of to 1650' ± West of SW corner Sec. 1, T5S, R7E (25' off the north side)	
Auglaize County	1940	1940											A	51	State Route 198 to SE corner Sec. 6, T5S, R6E	
Auglaize County	1940	1940											A	53	SW corner Sec. 2, T5S, R7E to SE corner Sec. 6, T5S, R8E	
Auglaize County	1941	1942					39	62	11	188	MR 4	404			42' North-south x 350' East-west triangle in NW 1/4 NW 1/4 Sec. 7, T5S, R8E	
Auglaize County	1951	1951									MR 6	112-124			SW corner Sec. 5, T5S, R8E to State Route 117	
State of Ohio		1956										162	37, 43 & 102	Varies	(Also Court Case #15528) 900' west to 1000' east of Interstate 75	
Auglaize County		1967										183	740		500' west to 1950' west of N 1/4 corner Sec. 8, T5S, R8E (55' off the south side)	
Auglaize County		1968										198	352 & 356		347' east to 1150.5' east of NW corner Sec. 7, T5S, R7E (40' off the south side)	
Auglaize County		1968										198	354		347' E to 1147' E of SW corner Sec. 6, T5S, R7E (30' off the north side the western 133'. 40' off the north side the remaining part)	
Auglaize County		1969										198	932		299' east to 675' east of NW corner Sec. 11, T5S, R7E (165' off the south side)	
Auglaize County		1969										206	2		160' east of SW corner Sec. 2, T5S, R7E east 500' ± to property line (45' off the north side)	
Auglaize County		1970										206	651-652		1100.75' east of SW corner Sec. 5, T5S, R7E east 200' ± to D.T.&I. Railroad (30' off the north side and 35' off the south side)	
Auglaize County		1970										206	653-654	80'	1366.75' east to 1566.75' east of SW corner Sec. 5, T5S, R7E	
Auglaize County		1972										215	90	Varies	868' east to 1018' east of west Sec. line Sec. 2, T5S, R5E (Varies from 25' at 868' to 80' at 1018' only off the north side)	
Auglaize County		1997										OR 265 OR 290	23 684	Varies	SW corner Sec. 2, T6S, R6E east 864.64'	
Auglaize County		1997										OR 303	962-964	Varies	CSX right-of-way east 131.75'	
Auglaize County		2004										OR 511	1404		1200' east to 2400' east of west Sec. line Sec. 2, T5S, R5E (70' off the south side)	
D. Dotson		2004												Varies	(Commissioners' Resolution 04-484) 299' east to 675' east of NW corner Sec. 11, T5S, R7E (120' off the south side)	
Auglaize County		2010										OR 591	1151-1152		1200' east to 2394.24' east of west Sec. line Sec. 2, T5S, R5E (50' off the north side)	
Auglaize County		2018										OR 692	2690-2691	Varies	975' east to 1075' east of west Sec. line Sec. 9, T5S, R6E (25' off the north side and 35' off south side)	

Old Road Name(s)
Kossuth Pike (1880) - west of SR 198
Virginia Creek Pike (1880) - 3 miles
Cumberland Pike (1882) - 2 miles
Moyer Pike (1898) - 3.25 mi.
Kossuth Virginia Creek Rd. (1917)
Buckland-Holden-Bingville RD (1932)

Buckland-Holden Rd.

Auglaize County Road Records

Road Name: Buckland-Holden Rd. Cont.
Road Number: 190



Right-of-way Width

	60 ft.		30 ft. north 35 ft. south
	50 ft.		25 ft. north 55 ft. south
	40 ft.		25 ft. north 70 ft. south
	80 ft.		25 ft. north 35 ft. south
	Varies		