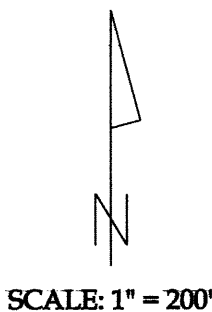
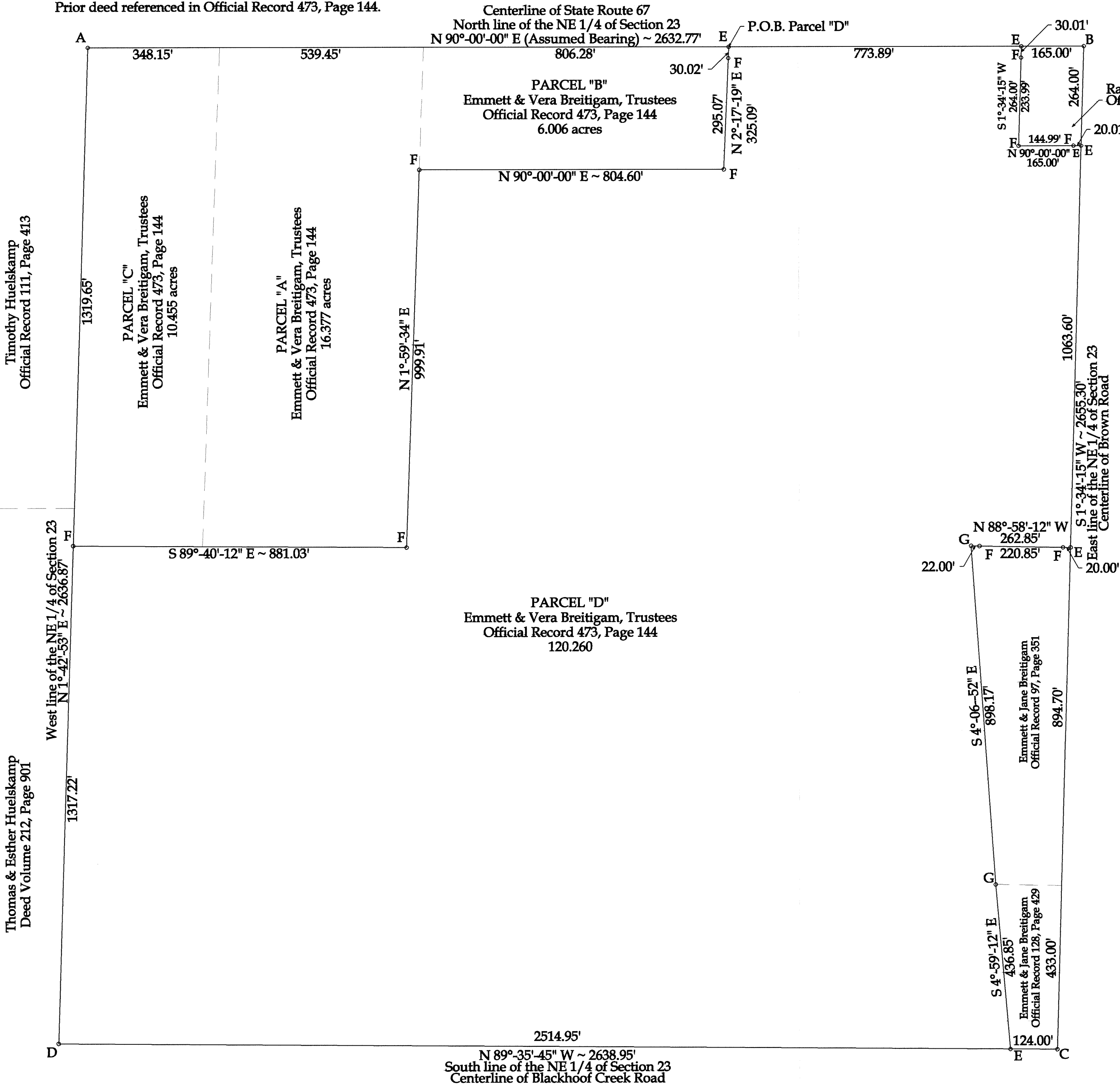


Survey of a parcel of land located in the NE 1/4 of Section 23,
T5S, R6E, Duchoquet Township, Auglaize County, Ohio.

Prior deed referenced in Official Record 473, Page 144.



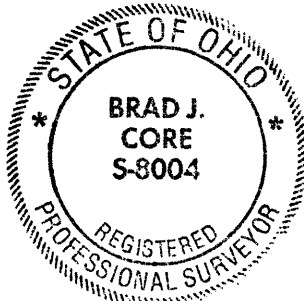
Legend

- A = Railroad Spike found at the NW corner of the NE 1/4 of Section 23
- B = MAG Nail found at the NE corner of Section 23
- C = Monument Box found at the SE corner of the NE 1/4 of Section 23
- D = Monument Box found at the SW corner of the NE 1/4 of Section 23
- E = MAG Nail Set
- F = #5 Rebar Set
- G = Unmonumented point that falls within ditch

Notes:
All distances called out on this plat are the measured distances, unless otherwise noted.

This plat and the accompanying legal descriptions represent an actual boundary survey completed under my direct supervision on February 4, 2003.

Brad J. Core
Brad J. Core, P.S.



CORE CONSULTING A DIVISION OF MATERIALS TESTING, INC 1660 S. DEFIANCE TRAIL SPENCERVILLE, OHIO 45887 (419) 647-6163			
CLIENT: JAMES BREITIGAM			
DRAWN BY: Z.J.G.	DATE: 2-4-2003	REVIEWED BY: B.J.C.	DATE: 2-11-2003
SCALE: 1" = 200'		PAGE 1	OF 2 PAGES

DESCRIPTION PARCEL "D"

Being a part of a parcel of land located in the NE $\frac{1}{4}$ of Section 23, T5S, R6E, Duchouquet Township, Auglaize County, Ohio, and referenced in prior Official Record 473, Page 144. More particularly described as follows:

Commencing, for reference, at an existing railroad spike at the NW corner of the NE $\frac{1}{4}$ of Section 23; thence N 90°-00'-00" E (Assumed bearing), on the North line of the NE $\frac{1}{4}$ of Section 23 (Centerline of State Route 67), 1693.88' to a MAG Nail set at the POINT OF BEGINNING; thence the following courses:

- 1) Continue N 90°-00'-00" E on said fractional section line, 773.89' to a set MAG nail;
- 2) S 1°-34'-15" W, 264.00' to a set #5 rebar, passing a set #5 rebar at 30.01';
- 3) N90°-00'-00" E, 165.00' to a MAG Nail set on the East line of the NE $\frac{1}{4}$ of Section 23 (Centerline of Brown Road), passing a set #5 rebar at 144.99';
- 4) S 1°-34'-15" W on said section line, 1063.60' to a set MAG Nail;
- 5) N 88°-58'-12" W, 262.85' to a point in a ditch, passing set #5 rebars at 20.00' and 240.85';
- 6) S 4°-06'-52" E, 898.17' to a point in the ditch;
- 7) S 4°-59'-12" E, 436.85' to a MAG Nail set on the South line of the NE $\frac{1}{4}$ of Section 23 (Centerline of Blackhoof Creek Road);
- 8) N 89°-35'-45" W on said half section line, 2514.95' to Monument Box found at the SW corner of the NE $\frac{1}{4}$ of Section 23;
- 9) N 1°-42'-53" E on the West line of the NE $\frac{1}{4}$ of Section 23, 1317.22' to a set #5 rebar;
- 10) S 89°-40'-12" E, 881.03' to a set #5 rebar;
- 11) N 1°-59'-34" E, 999.91' to a set #5 rebar;
- 12) N 90°-00'-00" E, 804.60' to a set #5 rebar;
- 13) N 2°-17'-19" E, 325.09' to the POINT OF BEGINNING, passing a set #5 rebar at 295.07'.

The above described parcel of land contains 120.260 acres, more or less, subject to all legal highways and easements of record.

This legal description and the accompanying plat represent an actual boundary survey conducted under the direct supervision of Brad J. Core, P.S. #8004 on February 4, 2003. All markers called for above are in place.