

Site Survey

Superior Federal Credit Union

Wapakoneta, Ohio

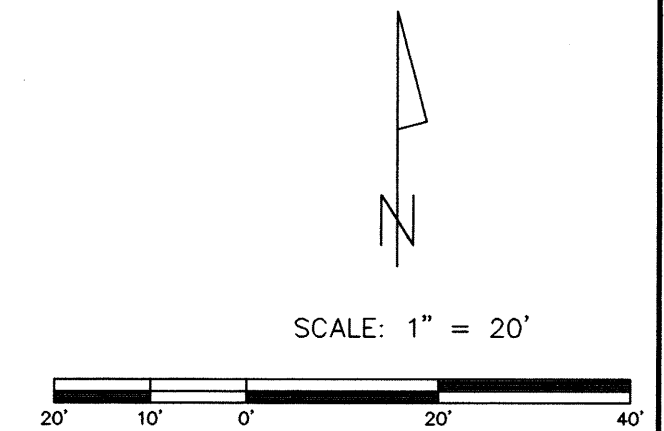
Boundary survey of the N 1/2 of Lots #70, #71, #72, & #73 and the W 24.80' of the N 1/2 of Lot # 74 located in the City of Wapakoneta, County of Auglaize, and State of Ohio, being part of the Original Plat of Wapakoneta, as recorded in PB 1, Pg. 2.

Prior Deed Referenced in OR 400, Pg. 32

Encroachments

- ① Asphalt parking lot appears to encroach on Mechanic St. by up to 0.56'.
- ② Asphalt parking lot appears to encroach on Mechanic St. by up to 0.65'.
- ③ Concrete wall appears to encroach on Willipie St. by up to 2.17'.
- ④ Bank sign appears to encroach on Mechanic & Willipie Streets by up to 2.49'.
- ⑤ Asphalt curb appears to encroach on the Public Alley by up to 0.60'.
- ⑥ Exit sign appears to encroach on Mechanic St. by up to 12.6'.

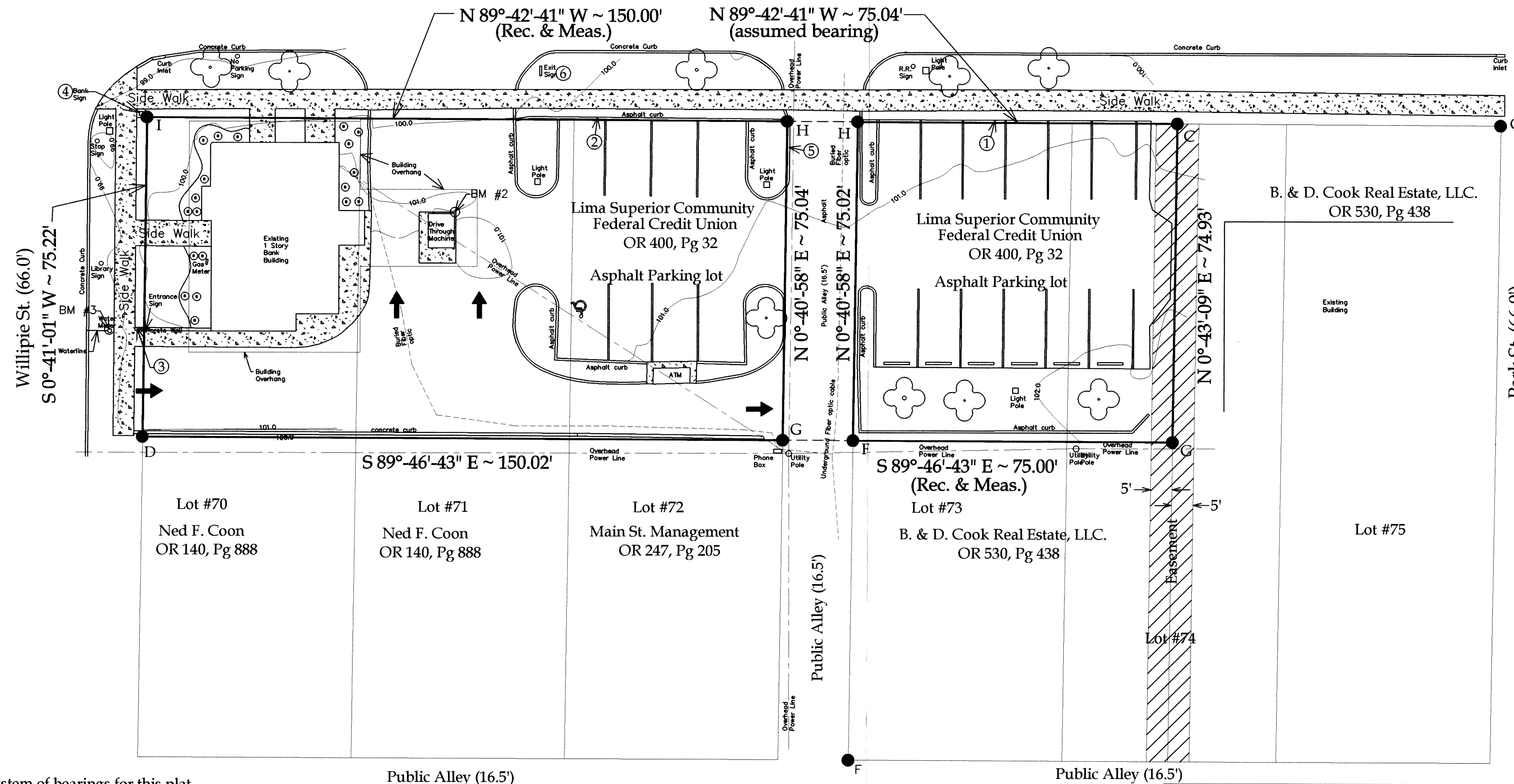
Point	Material	Elev.
BM #1	PK Nail Mechanic & Park Sts.	100.00'
BM #2	NE corner of Concrete at E Drive-thru	101.23'
BM #3	Top N edge Water meter	98.91'



BM #1

Note

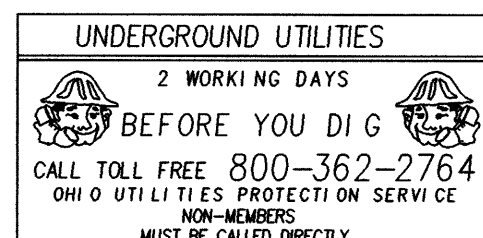
All dimensions shown on this plat are measured unless otherwise noted.



Legend

- C = Existing #5 rebar
- D = Existing #4 rebar
- E = Existing PK Nail
- F = Existing 3/4" pipe
- G = Set #5 rebar
- H = Set MAG Nail
- I = Unmonumented point on metal sign
- [Hatched Box] = Ingress & egress easement as described in DV 170, Pg. 647
- [Tree Symbol] = Trees
- [Bush Symbol] = Bushes
- [Concrete Area Symbol] = Concrete areas

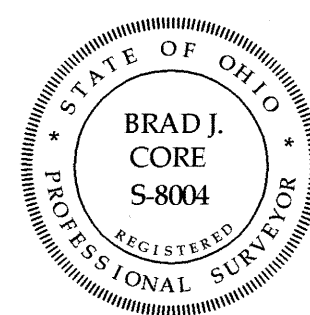
The system of bearings for this plat assumes the South line of Mechanic St. to be N 89°-42'-41" W.



OUPS REF. #0703 055115

Note

All underground utilities marked by the utility companies in response to the OUPS call-in are shown on this plat. Any underground utilities not marked in response to said call-in are not shown. Proceed with caution.



This plat represents an actual boundary survey completed under my direct supervision on July 24, 2006. All markers called for are in place.

Brad J. Core
Brad J. Core, P.S. #8004

REVISED
9-12-2006

Core Consulting
A Division of
MATERIALS TESTING, INC.
1660 S. DEFIANCE TRAIL
SPENCERVILLE, OHIO 45887
(419) 647-6163

CLIENT NAME SUPERIOR FEDERAL CREDIT UNION			
SURVEYED BY J.L.S.	DATE 7/24/06	DRAWN BY J.L.S.	DATE 7/24/06
SCALE 1" = 20'	PAGE 1	OF 1	PAGES

DUC-32-38