

ALTA/ACSM LAND TITLE SURVEY
of Lots Number 6 - 13
in David Weaver's Addition,
Part of Lot 40 in Graham's Addition,
and Part of the N.W. 1/4
of the N.E. 1/4 of Section 35
T 4 S - R 6 E
All in the Village of Cridersville,
Duchouquet Township
Auglaize County, Ohio

DESCRIPTION OF RECORD
O. R. VOLUME 262, PAGE 0146
1.8886 ACRES

Being an original description of a tract incorporating all or portions of parcels recorded in the following deeds to Faith Manor, Inc. in the deed records of Auglaize County, Ohio:

Volume 004, Page 558	Volume 197, Page 996
Volume 246, Page 353	Volume 254, Page 412
Volume 259, Page 482	Volume 259, Page 513
Volume 260, Page 411	Volume 261, Page 851

and being more particularly described as follows:

Being Part of the Northeast 1/4 of Section 35 of Duchouquet Township; Lots Number 10 through 13 and Parts of Lots Number 6 through 9 in David Weaver's Addition as platted (Plat Book 1, Page 307); and Part of Lot Number 40 in Graham's Addition as platted (Plat Case A, Pages 218-219), all in the Village of Cridersville, Auglaize County, Ohio.

BEGINNING FOR THE SAME at a 5/8-inch iron pin with yellow plastic "Sheldon E&S Lima, OH" cap set marking the southwest corner of Lot Number 40 in Graham's Addition and the east line of Elizabeth Street -
Thence North 01°-24'-17" East (bearing basis) on and along the west line of said Lot Number 40 and the east line of Elizabeth Street for a distance of 19.90 feet to an "X" set in concrete -
Thence South 88°-17'-27" East for a distance of 159.97 feet to a 5/8-inch iron pin with yellow plastic "Sheldon E&S Lima, OH" cap set -
Thence South 01°-26'-09" West for a distance of 15.51 feet to a 5/8-inch iron pin with yellow plastic "Sheldon E&S Lima, OH" cap set on the south line of Lot Number 40 -
Thence South 89°-51'-44" East on and along the south line of Graham's Addition for a distance of 215.62 feet to an iron pin found -
Thence South 01°-20'-30" West for a distance of 315.47 feet to a 5/8-inch iron pin with yellow plastic "Sheldon E&S Lima, OH" cap set on the north line of Main Street -
Thence North 90°-00'-00" West on and along the north line of Main Street for a distance of 16.77 feet to a PK nail set -
Thence North 01°-20'-30" East for a distance of 78.82 feet to a PK nail set -
Thence South 90°-00'-00" West for a distance of 95.64 feet to a PK nail set -
Thence South 00°-24'-14" East for a distance of 78.80 feet to a PK nail set on the north line of Main Street -
Thence North 90°-00'-00" West on and along the north line of Main Street for a distance of 70.98 feet to a PK nail set -
Thence North 01°-29'-13" East for a distance of 34.98 feet to a PK nail set -
Thence North 89°-58'-25" West for a distance of 50.00 feet to a 5/8-inch iron pin with yellow plastic "Sheldon E&S Lima, OH" cap set -
Thence South 01°-26'-22" West for a distance of 35.00 feet to a 5/8-inch iron pin with yellow plastic "Sheldon E&S Lima, OH" cap set -
Thence North 90°-00'-00" West on and along the north line of Main Street for a distance of 35.03 feet to a 5/8-inch iron pin with yellow plastic "Sheldon E&S Lima, OH" cap set -
Thence North 01°-23'-00" East for a distance of 99.93 feet to a 5/8-inch iron pin with yellow plastic "S & A" cap found -
Thence North 89°-57'-43" West for a distance of 109.95 feet to a 5/8-inch iron pin with yellow plastic "Sheldon E&S Lima, OH" cap found on the east line of Elizabeth Street -
Thence North 01°-24'-17" East on and along the east line of Elizabeth Street for a distance of 50.00 feet to a 5/8-inch iron pin with yellow plastic "Sheldon E&S Lima, OH" cap set marking the northwest corner of Lot Number 6 in David Weaver's Addition -
Thence South 89°-59'-04" East on and along the north line of Lots Number 6 through 10 in said Addition for a distance of 250.00 feet to a PK nail found marking the northeast corner of Lot Number 10 -
Thence North 01°-23'-21" East for a distance of 16.57 feet to a PK nail found marking the southeast corner of Lot Number 11 in said Addition -
Thence North 89°-59'-47" West on and along the south line of Lots Number 11 through 13 in said Addition for a distance of 149.92 feet to a 5/8-inch uncapped iron pin found -
Thence North 01°-12'-16" East for a distance of 149.61 feet to a railroad spike set -
Thence North 89°-51'-44" West on and along the north line of Lot Number 41 in Graham's Addition for a distance of 99.55 feet to the point of beginning.

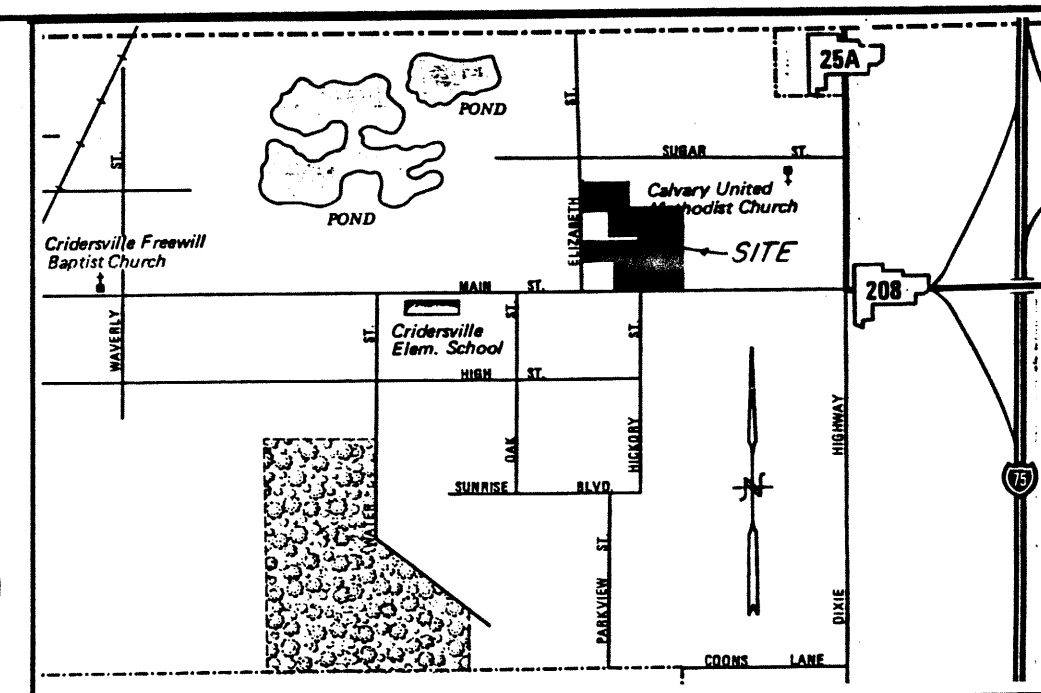
The tract as described contains in all 1.8886 acres of land subject, however, to all legal easements and rights of way of record.

CERTIFICATION
TO: Assured Care, Inc., an Ohio corporation;
First American Title Insurance Company;
Hummel Title Agency, Inc.

This is to certify that this map or plat and the survey on which it is based were made (i) in accordance with "Minimum Standard Detail Requirements for ALTA/ACSM Land Title Surveys," jointly established and adopted by ALTA, ACSM and NSPS in 1997, and (ii) pursuant to the Accuracy Standards (as adopted by ALTA and ACSM and in effect on the date of this certification) of an "Urban" survey.

Date: August 28, 1998

Eric C. Thomas
Eric C. Thomas, P.E., P.S.
Registered Surveyor #7236



VICINITY MAP
(NO SCALE)

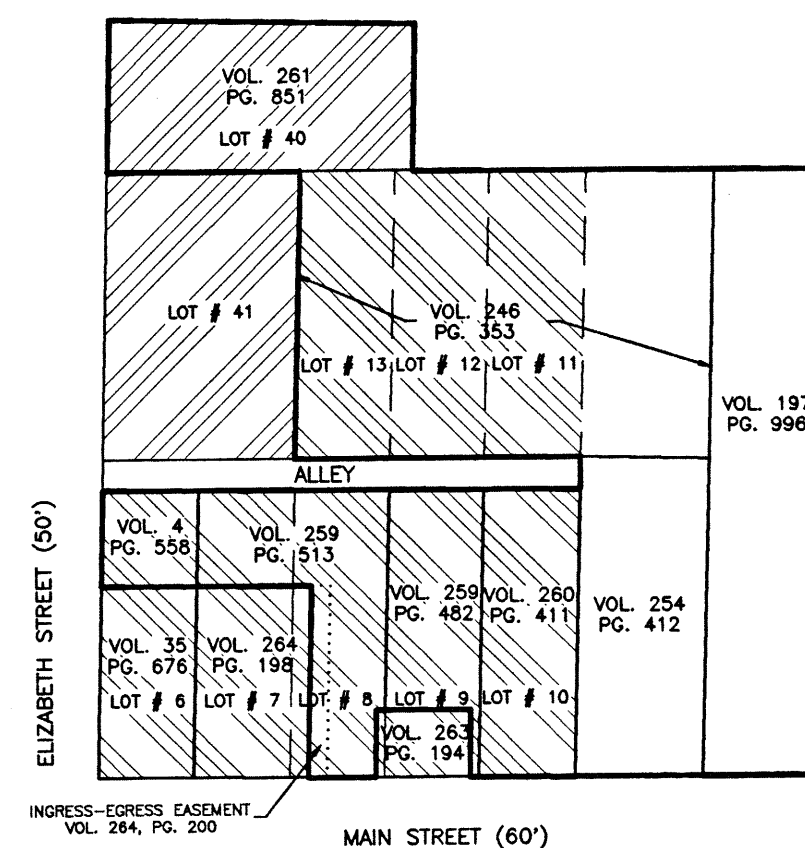
"X" Chiseled in concrete found
N 01°24'17" E
19.90'

THE S.W. COR. OF LOT 40
IN GRAHAM'S ADDITION
& THE POINT OF BEGINNING
FOR THE 1.8886 ACRE
NURSING HOME DESCRIPTION
AND FOR A 0.0650 ACRE
INGRESS-EGRESS EASEMENT

LEGEND

- 5/8" IP found capped with a marker stamped "SHELDON E & S / LIMA, OH"
- ▲ Railroad Spike found
- PK Nail found
- 5/8" IP found (not capped)
- 5/8" IP found capped with a marker stamped "SHELDON S & A / LIMA, OH"
- PK Nail set
- Utility Pole
- Light Pole
- Water Valve
- Water Meter
- Gas Valve
- Gas Meter
- Downspout
- 4" Cleanout
- Yard Hydrant
- Catch Basin
- Pine Tree (scale varies)
- Tree (scale varies)
- Shrub (scale varies)
- Building
- Asphalt Pavement
- Stone
- Concrete
- Chain Link Fence
- Wood Fence
- Woven Wood Fence

THE S.W. COR. OF LOT 6
IN DAVID WEAVER'S ADDITION
& THE POINT OF COMMENCEMENT
FOR A 0.3239 ACRE DRIVEWAY
EASEMENT, A 0.0788 ACRE TRACT,
AND A 0.0920 ACRE TRACT



GRAHAM'S ADDITION
PLAT CASE A, PAGES 218-219

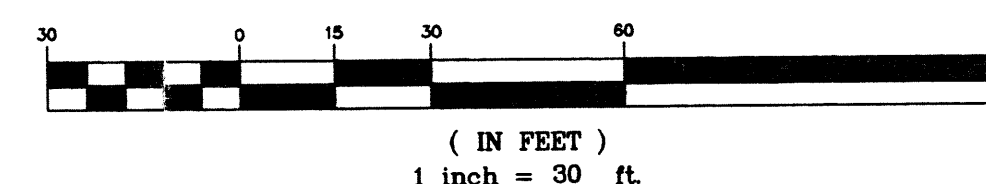
DAVID WEAVER'S ADDITION
PLAT BOOK 1, PAGE 307

REMAINDER IS SECTION GROUND IN THE N.W. 1/4
OF THE N.E. 1/4 OF SECTION 35, T4S-R6E.

BASIS OF BEARINGS:

ALL BEARINGS REFER TO THE NORTH LINE OF MAIN STREET
AS BEING N 90°00'00" E, AND THE EAST LINE OF ELIZABETH
STREET AS BEING N 01°24'17" E.

GRAPHIC SCALE



PREPARED BY:
SHELDON ENGINEERING & SURVEYING, INC.
1280 N. COLE ST. LIMA, OHIO 45801
TEL: (419) 228-4421
JAMES D. SHELDON, P.E., P.S.



THOMAS ENGINEERING
& SURVEYING, INC.
COLDWATER, OHIO

8-28-98	DATE	JOB NO.	17296ECT
DRAWN	CPN	NO.	
CHECKED	SES	SCALE	1" = 30'
APPROVED	JDS		