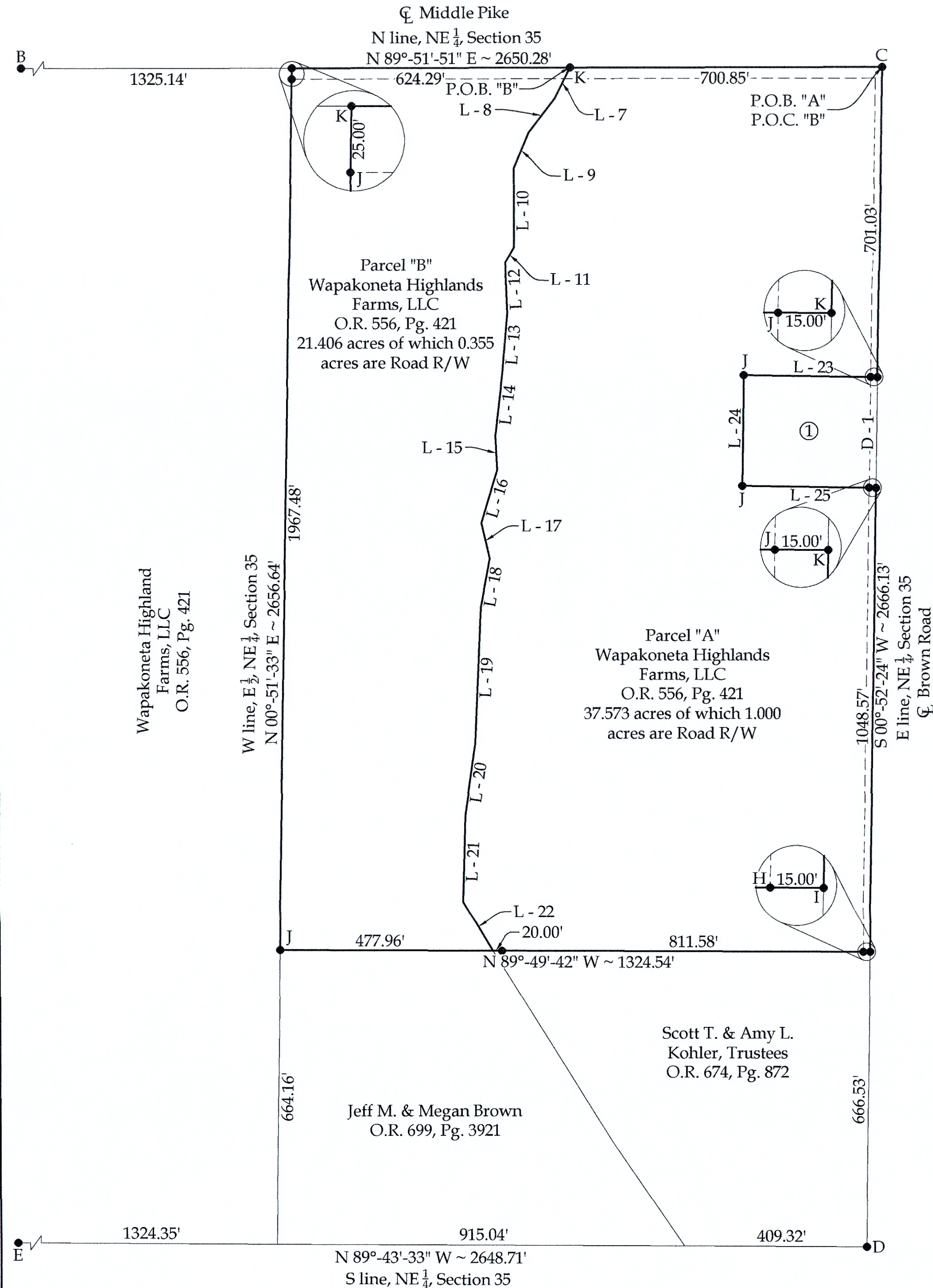


Survey of Parcel #B05-351-007-00 and being a part of the E 1/2 of the NE 1/4 of Section 35,
Town 5 South, Range 6 East, Duchouquet Township, Auglaize County, Ohio.
(Prior Deed Referenced in O.R. 556, Pg. 421)



Legend

- A = Existing Monument Box at the NW corner of Section 35
- B = Existing Monument Box at the NW corner of the NE 1/4 of Section 35
- C = Existing Monument Box at the NE corner of Section 35
- D = Existing Existing Monument Box at the SE corner of the NE 1/4 of Section 35
- E = #5 Rebar set at the SW corner of the NE 1/4 of Section 35
- F = Existing Concrete Post as established based on Survey I-432 of the Auglaize County Tax Map Office
- G = Mag Nail set at the SE corner of Section 35
- H = Existing #5 Rebar
- I = Existing Mag Nail
- J = Set #5 Rebar
- K = Set Mag Nail

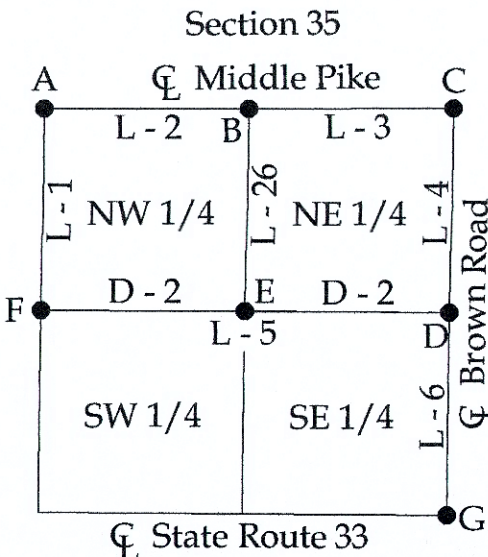
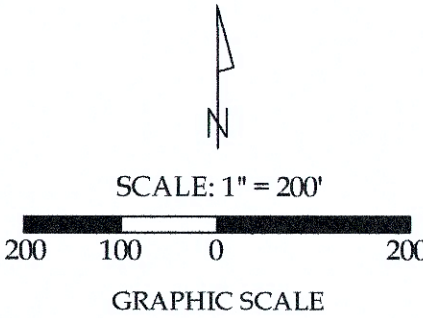
Line Data

- L - 1 = N 00°-49'-28" E ~ 2637.22'
- L - 2 = S 89°-56'-26" E ~ 2649.77'
- L - 3 = N 89°-51'-51" E ~ 2650.28'
- L - 4 = S 00°-52'-24" W ~ 2666.13'
- L - 5 = N 89°-43'-33" W ~ 5297.42'
- L - 6 = S 00°-59'-29" W ~ 2648.18'
- L - 7 = S 26°-23'-26" W ~ 78.04'
- L - 8 = S 37°-12'-35" W ~ 96.52'
- L - 9 = S 22°-19'-26" W ~ 87.60'
- L - 10 = S 00°-11'-54" W ~ 178.46'
- L - 11 = S 29°-45'-33" W ~ 38.61'
- L - 12 = S 02°-46'-59" E ~ 115.64'
- L - 13 = S 04°-51'-21" W ~ 135.21'
- L - 14 = S 06°-23'-42" W ~ 143.25'
- L - 15 = S 02°-49'-01" E ~ 77.46'
- L - 16 = S 16°-35'-46" W ~ 124.40'
- L - 17 = S 13°-09'-05" E ~ 82.07'
- L - 18 = S 10°-20'-36" W ~ 112.83'
- L - 19 = S 02°-18'-14" W ~ 304.06'
- L - 20 = S 07°-50'-07" W ~ 168.35'
- L - 21 = S 01°-25'-07" W ~ 194.52'
- L - 22 = S 30°-31'-12" E ~ 127.98'
- L - 23 = N 89°-07'-36" W ~ 300.00' (R & M)
- L - 24 = S 00°-52'-24" W ~ 250.00' (R & M)
- L - 25 = S 89°-07'-36" E ~ 300.00' (R & M)
- L - 26 = S 00°-50'-42" W ~ 2647.15'

NOTE: All distances on this plat are measured unless otherwise noted.

This plat is recorded in Survey Book #DUC-35-7, in the Auglaize County Engineer's Office.

BASIS OF BEARINGS: The system of bearings for this plat and legal description is based on the Ohio State Plane - North Coordinate System NAD83 (2011).



Property Information

- ① Daniel J. & Dorothy A. Brown
O.R. 648, Pg. 544

Line Data

- D - 1 = 250.00' (R & M)
- D - 2 = 2648.71'



This plat and accompanying legal descriptions represent an actual boundary survey completed under my direct supervision on November 18, 2023.

Kyle J. Binkley, P.S. #8587

121 W. Auglaize Street Wapakoneta, Ohio 45895 (419) 236-3768			
CLIENT: Tom Brown			
SURVEYED BY: T.J.S./T.E.W.	DATE: 11-18-2022	DRAWN BY: K.J.B.	CHECKED BY: K.J.B.
SCALE: 1" = 200'		PAGE: 1	PAGES: 5

Parcel "A"
LEGAL DESCRIPTION

Being a part of Parcel #B05-351-007-00 (Prior Deed Referenced in O.R. 556, Pg. 421) and being a part of the E ½ of the NE ¼ of Section 35, Town 5 South, Range 6 East, Duchouquet Township, Auglaize County, Ohio, more particularly described as follows:

Beginning at an existing Monument Box at the NE corner of Section 35; thence the following courses:

1. S 00°-52'-24" W with the E line of the NE ¼ of Section 35 (centerline of Brown Road), 701.03' to a set Mag Nail;
2. N 89°-07'-36" W, 300.00' to a set #5 Rebar, passing a set #5 Rebar at 15.00';
3. S 00°-52'-24" W, 250.00' to a set #5 Rebar;
4. S 89°-07'-36" E, 300.00' to a Mag Nail set on the E line of the NE ¼ of Section 35 (centerline of Brown Road), passing a set #5 Rebar at 285.00';
5. S 00°-52'-24" W with said fractional section line, 1048.57' to an existing Mag Nail;
6. N 89°-49'-42" W, 846.58' to a point within the banks of an open ditch, passing an existing #5 Rebar at 15.00' and 826.58';
7. N 30°-31'-12" W within the banks of an open ditch, 127.98' to a point;
8. N 01°-25'-07" E within the banks of an open ditch, 194.52' to a point;
9. N 07°-50'-07" E within the banks of an open ditch, 168.35' to a point;
10. N 02°-18'-14" E within the banks of an open ditch, 304.06' to a point;
11. N 10°-20'-36" E within the banks of an open ditch, 112.83' to a point;
12. N 13°-09'-05" W within the banks of an open ditch, 82.07' to a point;
13. N 16°-35'-46" E within the banks of an open ditch, 124.40' to a point;
14. N 02°-49'-01" W within the banks of an open ditch, 77.46' to a point;
15. N 06°-23'-42" E within the banks of an open ditch, 143.25' to a point;
16. N 04°-51'-21" E within the banks of an open ditch, 135.21' to a point;
17. N 02°-46'-59" W within the banks of an open ditch, 115.64' to a point;
18. N 29°-45'-33" E within the banks of an open ditch, 38.61' to a point;
19. N 00°-11'-54" E within the banks of an open ditch, 178.46' to a point;
20. N 22°-19'-26" E within the banks of an open ditch, 87.60' to a point;

- 21. N 37°-12'-35" E within the banks of an open ditch, 96.52' to a point;
- 22. N 26°-23'-26" E within the banks of an open ditch, 78.04' to a Mag Nail set on the N line of the NE ¼ of Section 35 (centerline of Middle Pike);
- 23. N 89°-51'-51" E with said fractional section line, 700.85' to the POINT OF BEGINNING.

The above described parcel contains 37.573 acres, more or less, of which 1.000 acres are occupied by road right-of-way, subject to all legal highways and easements of record.

The system of bearings for this legal description is based on the Ohio State Plane-North Coordinate System NAD83 (2011). This legal description and accompanying plat represent an actual boundary survey completed under the direct supervision of Kyle J. Binkley, P.S. #8587 on November 18, 2022. All markers called for above are in place.



A handwritten signature in black ink, appearing to read "K. Binkley", positioned to the right of the professional seal.

Parcel "B"
LEGAL DESCRIPTION

Being a part of Parcel #B05-351-007-00 (Prior Deed Referenced in O.R. 556, Pg. 421) and being a part of the E ½ of the NE ¼ of Section 35, Town 5 South, Range 6 East, Duchouquet Township, Auglaize County, Ohio, more particularly described as follows:

Commencing at an existing Monument Box at the NE corner of Section 35; thence S 89°-51'-51" W with the N line of the NE ¼ of Section 35 (centerline of Middle Pike), 700.85' to a Mag Nail set at the POINT OF BEGINNING; thence the following courses:

1. S 26°-23'-26" W within the banks of an open ditch, 78.04' to a point;
2. S 37°-12'-35" W within the banks of an open ditch, 96.52' to a point;
3. S 22°-19'-26" W within the banks of an open ditch, 87.60' to a point;
4. S 00°-11'-54" W within the banks of an open ditch, 178.46' to a point;
5. S 29°-45'-33" W within the banks of an open ditch, 38.61' to a point;
6. S 02°-46'-59" E within the banks of an open ditch, 115.64' to a point;
7. S 04°-51'-21" W within the banks of an open ditch, 135.21' to a point;
8. S 06°-23'-42" W within the banks of an open ditch, 143.25' to a point;
9. S 02°-49'-01" E within the banks of an open ditch, 77.46' to a point;
10. S 16°-35'-46" W within the banks of an open ditch, 124.40' to a point;
11. S 13°-09'-05" E within the banks of an open ditch, 82.07' to a point;
12. S 10°-20'-36" W within the banks of an open ditch, 112.83' to a point;
13. S 02°-18'-14" W within the banks of an open ditch, 304.06' to a point;
14. S 07°-50'-07" W within the banks of an open ditch, 168.35' to a point;
15. S 01°-25'-07" W within the banks of an open ditch, 194.52' to a point;
16. S 30°-31'-12" E within the banks of an open ditch, 127.98' to a point;
17. N 89°-49'-42" W, 477.96' to a #5 Rebar set on the W line of the E ½ of the NE ¼ of Section 35;
18. N 00°-51'-33" E with said fractional section line, 1992.48' to a Mag Nail set on the N line of the NE ¼ of Section 35 (centerline of Middle Pike), passing a set #5 Rebar at 1967.48';
19. N 89°-51'-51" E with said fractional section line, 624.29' to the POINT OF BEGINNING.

The above described parcel contains 21.406 acres, more or less, of which 0.355 acres are occupied by road right-of-way, subject to all legal highways and easements of record.

The system of bearings for this legal description is based on the Ohio State Plane-North Coordinate System NAD83 (2011). This legal description and accompanying plat represent an actual boundary survey completed under the direct supervision of Kyle J. Binkley, P.S. #8587 on November 18, 2022. All markers called for above are in place.



A handwritten signature in black ink, appearing to read "KJ Binkley", written over the seal.