

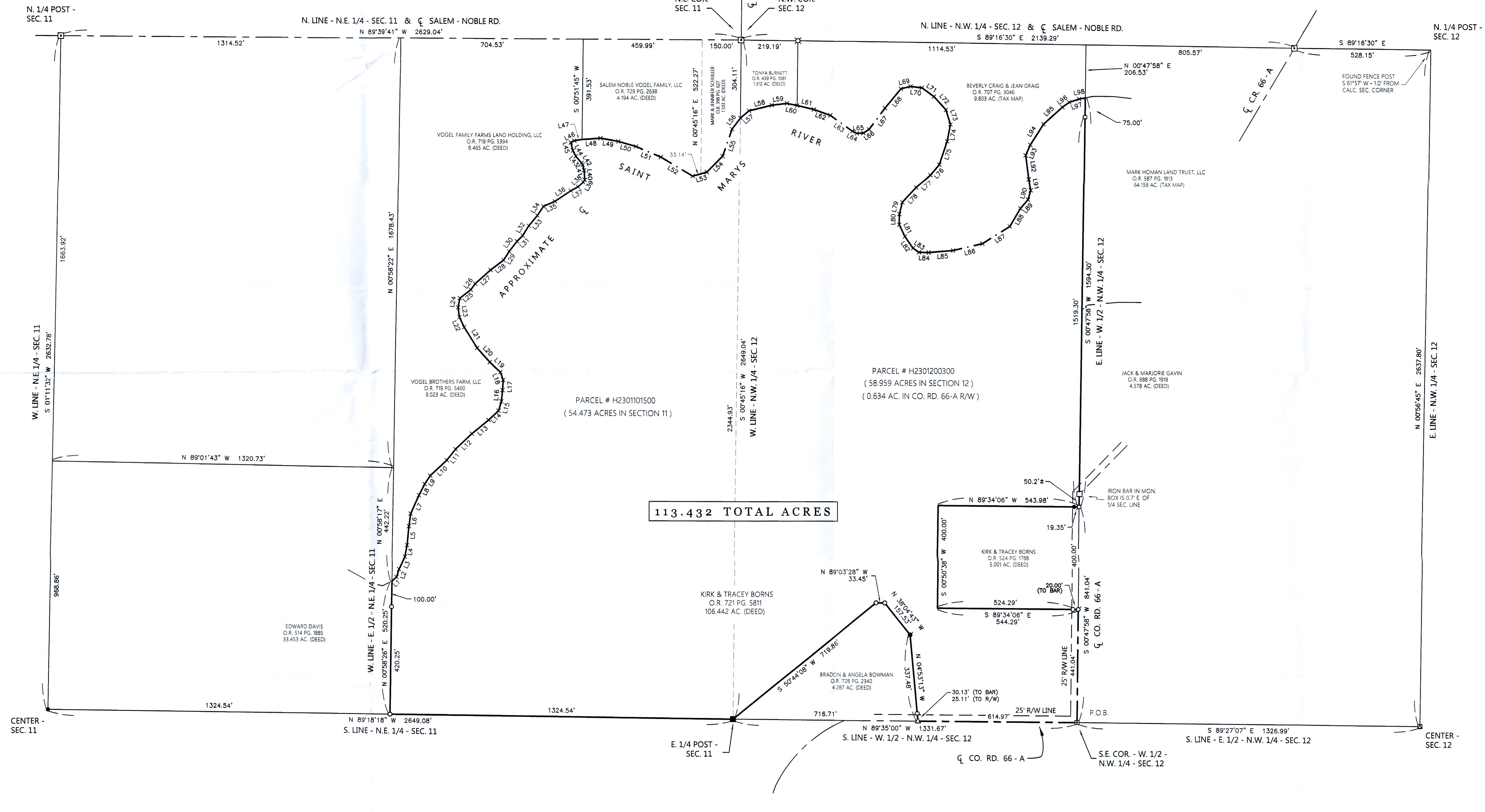
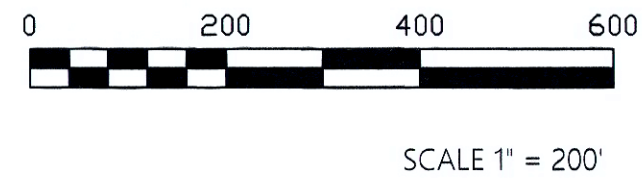
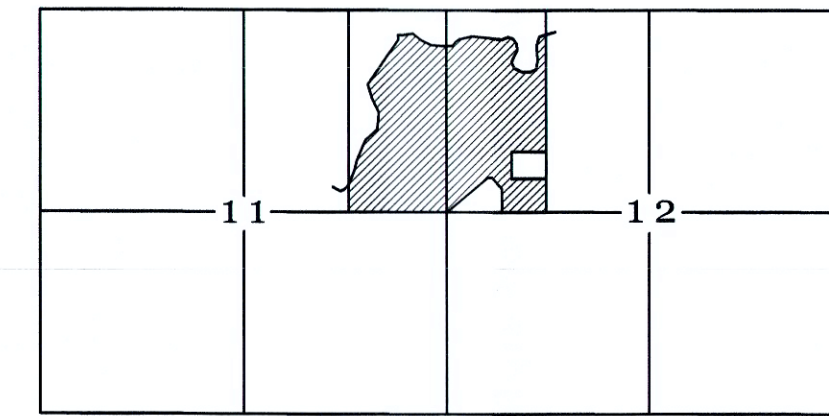
BORNS SURVEY

OF LANDS SOUTH OF THE SAINT MARYS RIVER IN THE E. 1/2 OF THE N.E. 1/4 OF SECTION 11 AND THE W. 1/2 OF THE N.W. 1/4 OF SECTION 12,
TOWN 5 SOUTH, RANGE 4 EAST, (NOBLE TOWNSHIP), AUGLAIZE COUNTY, OHIO.

LEGEND

- = IRON BAR IN MON. BOX FOUND.
- = CORNERSTONE IN MON. BOX FOUND.
- △ = RAILROAD SPIKE FOUND.
- = 5/8 INCH IRON BAR FOUND.
- = IRON PIPE FOUND.
- = WOOD CORNER POST FOUND.
- ⊙ = MAG SPIKE SET.
- = 5/8 INCH IRON BAR SET.
- x = ANGLE POINT IN RIVER.

LOCATION SKETCH



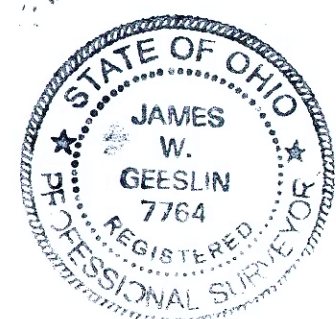
LINE TABLE

LINE	BEARING	DISTANCE
L1	N 49°50'14" E	23.60'
L2	N 7°59'49" E	32.28'
L3	N 25°55'29" E	54.41'
L4	N 10°51'03" E	46.08'
L5	N 05°23'53" E	74.43'
L6	N 08°08'12" E	49.43'
L7	N 24°17'31" E	78.23'
L8	N 27°18'07" E	48.78'
L9	N 33°00'05" E	39.15'
L10	N 46°57'14" E	88.08'
L11	N 37°48'10" E	54.83'
L12	N 48°18'31" E	87.08'
L13	N 50°27'48" E	83.46'
L14	N 48°08'19" E	52.43'
L15	N 16°54'38" E	38.13'
L16	N 05°42'58" E	44.49'
L17	N 03°10'57" E	39.90'
L18	N 19°40'07" W	32.91'
L19	N 45°01'24" W	56.37'
L20	N 41°22'18" W	73.74'
L21	N 31°44'39" W	94.75'
L22	N 24°55'21" W	42.50'
L23	N 08°08'12" W	38.94'
L24	N 10°51'03" W	46.08'
L25	N 52°16'33" E	53.99'
L26	N 35°14'22" E	28.65'
L27	N 47°48'19" E	79.95'
L28	N 52°08'51" E	62.81'
L29	N 30°59'04" E	40.14'
L30	N 37°12'28" E	50.12'
L31	N 45°01'24" E	56.37'
L32	N 31°17'04" E	45.10'
L33	N 39°38'28" E	52.24'
L34	N 38°12'03" E	42.77'
L35	N 66°23'18" E	28.11'
L36	N 56°19'53" E	74.49'
L37	N 61°02'38" E	31.81'
L38	N 47°08'40" E	68.51'
L39	N 29°45'54" E	11.10'
L40	N 04°14'24" W	37.27'
L41	N 14°00'07" W	22.70'
L42	N 30°59'04" W	40.14'
L43	N 40°07'26" W	34.20'
L44	N 26°35'01" W	24.63'
L45	N 14°37'56" W	32.72'
L46	N 63°27'13" E	15.40'
L47	N 81°21'54" E	30.30'
L48	N 85°58'57" E	71.50'
L49	S 78°42'00" E	69.72'
L50	S 73°48'37" E	71.09'
L51	S 66°45'30" E	104.58'
L52	S 58°53'07" E	143.54'
L53	N 73°51'04" E	57.14'
L54	N 44°37'58" E	86.70'
L55	N 19°02'40" E	111.79'
L56	N 36°53'13" E	54.02'
L57	N 50°04'14" E	43.81'
L58	N 76°05'19" E	90.99'
L59	N 82°48'04" E	59.21'
L60	S 77°05'40" E	39.90'
L61	S 76°40'40" E	66.74'
L62	S 70°16'39" E	68.31'
L63	S 64°34'00" E	106.22'
L64	S 64°32'12" E	19.36'
L65	N 86°18'31" E	25.85'
L66	N 58°49'17" E	23.85'
L67	N 36°28'17" E	102.85'
L68	N 39°03'15" E	97.12'
L69	N 75°57'50" E	37.74'
L70	S 83°25'05" E	43.56'
L71	S 53°47'26" E	57.76'
L72	S 42°05'21" E	69.53'
L73	S 17°08'43" E	59.23'
L74	S 10°45'03" W	66.92'
L75	S 18°35'28" W	96.58'
L76	S 39°55'13" W	53.17'
L77	S 47°29'42" W	70.78'
L78	S 42°58'20" W	78.98'
L79	S 14°11'28" W	47.97'
L80	S 00°44'39" W	41.17'
L81	S 26°01'47" W	51.16'
L82	S 34°45'55" E	55.31'
L83	S 55°45'37" E	28.25'
L84	S 68°43'37" E	36.66'
L85	N 85°04'22" E	14.84'
L86	N 76°33'05" E	115.58'
L87	N 57°45'27" E	125.20'
L88	N 29°53'11" E	81.74'
L89	N 40°36'05" E	45.08'
L90	N 16°06'48" E	38.15'
L91	N 11°56'39" W	43.29'
L92	N 07°25'53" W	54.47'
L93	N 23°44'58" E	44.50'
L94	N 32°20'02" E	95.83'
L95	N 47°49'45" E	98.99'
L96	N 54°17'38" E	32.10'
L97	N 70°49'18" E	39.67'
L98	N 79°01'10" E	25.31'

GEESLIN SURVEYING

525 S. SECOND ST.
COLDWATER, OHIO 45828

Phone : (419) 678 - 7233
Phone : (419) 678 - 7232 (cell)
Email : jwgeeslinsurveyor@gmail.com



THIS PLAT REPRESENTS AN ACTUAL FIELD SURVEY PERFORMED
UNDER MY SUPERVISION DATED AUGUST 5, 2015.

James W. Geeslin
JAMES W. GEESLIN
PROFESSIONAL SURVEYOR 7764

NOTE: THE BEARINGS CONTAINED HEREIN ARE BASED ON GPS OBSERVATIONS
USING O.D.O.T. CORRS NETWORK STATIONS, CONVERTED TO THE OHIO
STATE PLANE NORTH ZONE, HORIZONTAL DATUM NAD83 (2011).

SURVEY REFERENCES:

- 1) SURVEYS BY T. STEINKE, P.S. 6177 OF A 1.5026 AC. PARCEL AND A 4.287 AC. PARCEL.
- 2) JAMES JOHNS SURVEY BY D. REINHART, P.S. 6507, JUNE 1982.
- 3) SCHAMP ESTATE SURVEY BY J. KENT, P.S. 6792, SEPT./OCT. 1998.
- 4) VOGEL SURVEY BY LOCK-TWO SURVEYING, 3/9/22.
- 5) PRIOR SURVEYS FOR SMITH (6/11/2001) AND BORNS (4/8/2005).

August 6, 2025

BORNS SURVEY DESCRIPTION

Being all of Parcel Numbers H2301101500 and H2301200300, conveyed to Kirk and Tracey Borns by deed recorded at Official Record 721, page 5811, situated in Noble Township, Auglaize County, Ohio, in the east half of the northeast quarter of Section 11 and the west half of the northwest quarter of Section 12, Township 5 South, Range 4 East. Being more particularly described as follows:

Beginning at an iron bar in a monument box found at the southeast corner of the west half of the northwest quarter of said Section 12 -

Thence, North 89°35'00" West, along the south line of the west half of the northwest quarter of said Section 12 and the centerline of County Road 66-A, a distance of 614.97 feet to a railroad spike found -

Thence, North 04°53'13" West, a distance of 337.48 feet to an iron pipe found -

Thence, North 38°04'43" West, a distance of 157.53 feet to a 5/8 inch iron bar set -

Thence, North 89°03'28" West, a distance of 33.45 feet to a 5/8 inch iron bar set -

Thence, South 50°44'08" West, a distance of 719.86 feet to a wood corner post found at the East Quarter Post of said Section 11 -

Thence, North 89°18'18" West, along the south line of the northeast quarter of said Section 11, a distance of 1324.54 feet to a 5/8 inch iron bar set -

Thence, North 00°58'26" East, along the west line of the east half of the northeast quarter of said Section 11, passing through a 5/8 inch iron bar set at 420.25 feet, a total distance of 520.25 feet to a point in the approximate centerline of the Saint Marys River -

Thence, along the meanderings of the approximate centerline of the Saint Marys River, the following courses and distances:

- North 48°50'14" East, a distance of 23.60 feet to a point -
- North 17°39'49" East, a distance of 32.28 feet to a point -
- North 25°55'29" East, a distance of 54.41 feet to a point -
- North 10°51'03" East, a distance of 46.08 feet to a point -
- North 05°23'37" East, a distance of 74.43 feet to a point -
- North 08°08'12" East, a distance of 49.43 feet to a point -
- North 24°17'31" East, a distance of 78.23 feet to a point -
- North 27°19'07" East, a distance of 48.78 feet to a point -
- North 33°00'05" East, a distance of 39.15 feet to a point -
- North 46°57'14" East, a distance of 88.08 feet to a point -
- North 37°46'10" East, a distance of 54.83 feet to a point -
- North 46°19'31" East, a distance of 87.06 feet to a point -
- North 50°27'48" East, a distance of 83.46 feet to a point -
- North 46°06'15" East, a distance of 52.43 feet to a point -

<div>GEESLIN SURVEYING</div> <div>525 S. SECOND ST. COLDWATER, OHIO 45828</div> <div>Phone : (419) 678 - 7233 Phone : (419) 678 - 7232 (cell) Email : jwgeeslinsurveyor@gmail.com</div>		PERMANENT PARCEL No. _____ - _____ - _____ - _____ - _____
		Part of : _____ Sec. _____ T. _____ R. _____ Township _____
		Grantor : _____ Area Retained _____ Acres
		Grantee : _____ Area Retained _____ Acres
Deed Reference : _____		
APPROVALS : _____		
AGENCY : _____		
DATE : _____ Board of Health _____ Township Zoning Officer _____ Mercer County Engineer _____		

August 6, 2025

BORNS SURVEY DESCRIPTION

North 16°54'36" East, a distance of 38.13 feet to a point -
North 05°42'55" East, a distance of 44.49 feet to a point -
North 03°10'57" East, a distance of 39.90 feet to a point -
North 19°40'07" West, a distance of 32.91 feet to a point -
North 45°01'24" West, a distance of 56.37 feet to a point -
North 41°22'15" West, a distance of 73.74 feet to a point -
North 31°44'39" West, a distance of 94.75 feet to a point -
North 24°55'21" West, a distance of 42.50 feet to a point -
North 08°08'12" West, a distance of 38.94 feet to a point -
North 10°53'39" East, a distance of 36.45 feet to a point -
North 52°16'33" East, a distance of 53.99 feet to a point -
North 35°14'22" East, a distance of 28.65 feet to a point -
North 47°48'57" East, a distance of 79.95 feet to a point -
North 52°08'51" East, a distance of 62.81 feet to a point -
North 30°59'04" East, a distance of 40.14 feet to a point -
North 37°12'26" East, a distance of 50.12 feet to a point -
North 45°01'24" East, a distance of 31.16 feet to a point -
North 31°17'04" East, a distance of 45.10 feet to a point -
North 39°38'25" East, a distance of 52.24 feet to a point -
North 33°12'00" East, a distance of 42.77 feet to a point -
North 66°23'16" East, a distance of 48.11 feet to a point -
North 56°19'53" East, a distance of 74.49 feet to a point -
North 61°02'38" East, a distance of 31.81 feet to a point -
North 47°08'40" East, a distance of 26.31 feet to a point -
North 29°45'54" East, a distance of 11.10 feet to a point -
North 04°14'24" West, a distance of 37.27 feet to a point -
North 14°02'50" West, a distance of 22.70 feet to a point -
North 30°59'04" West, a distance of 8.03 feet to a point -
North 40°07'26" West, a distance of 34.20 feet to a point -
North 26°35'01" West, a distance of 24.63 feet to a point -
North 14°37'56" West, a distance of 32.72 feet to a point -
North 63°27'13" East, a distance of 15.40 feet to a point -
North 81°21'54" East, a distance of 30.30 feet to a point -
North 85°56'57" East, a distance of 71.50 feet to a point -
South 79°42'00" East, a distance of 69.72 feet to a point -
South 73°48'37" East, a distance of 71.09 feet to a point -
South 66°45'30" East, a distance of 104.58 feet to a point -
South 58°53'07" East, a distance of 143.54 feet to a point -
North 73°51'04" East, a distance of 57.14 feet to a point -
North 44°37'58" East, a distance of 86.70 feet to a point -
North 19°02'40" East, a distance of 111.79 feet to a point -
North 36°53'13" East, a distance of 54.02 feet to a point -
North 50°04'14" East, a distance of 43.81 feet to a point -
North 76°05'19" East, a distance of 90.99 feet to a point -
North 82°48'04" East, a distance of 59.21 feet to a point -
South 77°05'40" East, a distance of 39.90 feet to a point -

GEESLIN SURVEYING

525 S . SECOND ST.
COLDWATER, OHIO 45828

Phone : (419) 678 - 7233
Phone : (419) 678 - 7232 (cell)
Email : jwgeeslinsurveyor@gmail.com

PERMANENT PARCEL No.	_____ - _____ - _____ - _____ - _____
Part of :	_____ Sec. _____ T. _____ R. _____ Township _____
Grantor :	_____ Area Retained _____ Acres
Grantee :	_____ Area Retained _____ Acres
Deed Reference :	_____
APPROVALS :	_____
AGENCY :	_____
DATE :	Board of Health Township Zoning Officer Mercer County Engineer

August 6, 2025

BORNS SURVEY DESCRIPTION

South 76°40'40" East, a distance of 66.74 feet to a point -
South 70°16'39" East, a distance of 68.31 feet to a point -
South 54°34'00" East, a distance of 106.22 feet to a point -
South 64°32'12" East, a distance of 19.36 feet to a point -
North 86°18'31" East, a distance of 25.85 feet to a point -
North 56°49'17" East, a distance of 25.85 feet to a point -
North 36°28'37" East, a distance of 102.85 feet to a point -
North 39°03'15" East, a distance of 97.12 feet to a point -
North 75°57'50" East, a distance of 37.74 feet to a point -
South 83°25'05" East, a distance of 43.56 feet to a point -
South 53°47'26" East, a distance of 57.76 feet to a point -
South 42°05'21" East, a distance of 69.53 feet to a point -
South 17°09'43" East, a distance of 59.23 feet to a point -
South 10°45'03" West, a distance of 66.92 feet to a point -
South 18°35'28" West, a distance of 96.58 feet to a point -
South 39°55'13" West, a distance of 53.17 feet to a point -
South 47°22'42" West, a distance of 70.78 feet to a point -
South 42°58'20" West, a distance of 78.98 feet to a point -
South 14°11'28" West, a distance of 47.97 feet to a point -
South 00°44'39" West, a distance of 41.17 feet to a point -
South 26°01'47" East, a distance of 51.16 feet to a point -
South 34°45'55" East, a distance of 55.31 feet to a point -
South 55°45'37" East, a distance of 28.25 feet to a point -
South 88°43'37" East, a distance of 36.66 feet to a point -
North 85°04'22" East, a distance of 94.84 feet to a point -
North 76°33'05" East, a distance of 115.58 feet to a point -
North 57°45'27" East, a distance of 125.20 feet to a point -
North 29°53'11" East, a distance of 81.74 feet to a point -
North 40°36'05" East, a distance of 45.06 feet to a point -
North 16°06'48" East, a distance of 38.15 feet to a point -
North 11°56'39" West, a distance of 43.29 feet to a point -
North 07°25'53" West, a distance of 94.47 feet to a point -
North 23°44'58" East, a distance of 44.50 feet to a point -
North 32°20'02" East, a distance of 95.83 feet to a point -
North 47°49'45" East, a distance of 98.99 feet to a point -
North 54°17'36" East, a distance of 32.10 feet to a point -
North 70°49'16" East, a distance of 39.67 feet to a point -
North 79°01'10" East, a distance of 25.31 feet to a point -

Thence, leaving the approximate centerline of the Saint Marys River, South 00°47'58" West, along the east line of the west half of the northwest quarter of said Section 12, passing through a 5/8 inch iron bar set at 75.00 feet, a total distance of 1594.30 feet to a Mag spike set -

Thence, North 89°34'06" West, passing through a 5/8 inch iron bar found at 19.35 feet, a total distance of 543.98 feet to a point -

GEESLIN SURVEYING

525 S. SECOND ST.
COLDWATER, OHIO 45828

Phone : (419) 678 - 7233
Phone : (419) 678 - 7232 (cell)
Email : jwgeeslinsurveyor@gmail.com

PERMANENT PARCEL No.	_____ - _____ - _____ - _____ - _____		
Part of :	_____ Sec.	_____ T.	_____ R. _____ Township
Grantor :	_____	Area Retained	_____ Acres
Grantee :	_____	Area Retained	_____ Acres
Deed Reference :	_____		
APPROVALS :	_____		
AGENCY :	_____		
DATE :	Board of Health	Township Zoning Officer	Mercer County Engineer

August 6, 2025

BORNS SURVEY DESCRIPTION

Thence, South 00°50'38" West, a distance of 400.00 feet to a point -

Thence, South 89°34'06" East, passing through a 5/8 inch iron bar set at 524.29 feet, a total distance of 544.29 feet to a Mag spike set -

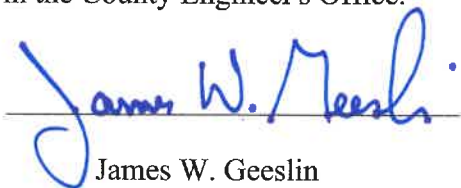
Thence, South 00°47'58" West, along the east line of the west half of the northwest quarter of said Section 12 and the centerline of County Road 66-A, a distance of 441.04 feet to the place of beginning.

Containing 113.432 acres of land more or less.

Subject to all easements and right-of-way of record.

The bearings contained herein are based on GPS observations using O.D.O.T. CORS Network Stations, converted to the Ohio State Plane North Zone, Horizontal Datum NAD83 (2011).

This legal description and accompanying plat represent an actual boundary survey completed under the direct supervision of James W. Geeslin, Professional Surveyor 7764, dated August 5, 2025. On file in the County Engineer's Office.

Surveyed by 
James W. Geeslin
P.S. 7764



<div>GEESLIN SURVEYING</div> <div>525 S. SECOND ST. COLDWATER, OHIO 45828</div> <div>Phone : (419) 678 - 7233 Phone : (419) 678 - 7232 (cell) Email : jwgeeslinsurveyor@gmail.com</div>		PERMANENT PARCEL No. _____
		Part of : _____ Sec. _____ T. _____ R. _____ Township _____
		Grantor : _____ Area Retained _____ Acres _____
		Grantee : _____ Area Retained _____ Acres _____
		Deed Reference : _____
		APPROVALS : _____
		AGENCY : _____
		DATE : _____ Board of Health _____ Township Zoning Officer _____ Mercer County Engineer _____