

LEGEND

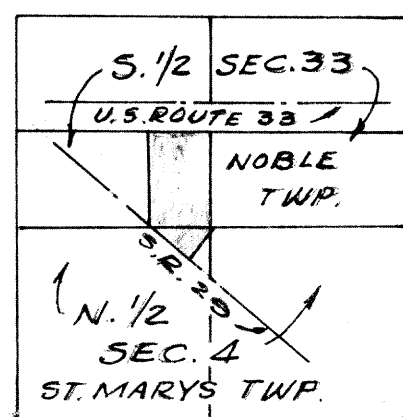
"A"= STONE FOUND AT N.W. CORNER OF SEC. 4, ST. MARYS TWP.
 "B"= S.W. CORNER OF SEC. 33, NOBLE TWP. (SEE COUNTY ENGR'S RECORDS.)
 "C"= IRON PIN AT S.E. CORNER OF SEC. 33. (SEE CO. ENGR'S RECORDS.)
 "D"= IRON PIN AT N.E. CORNER OF SEC. 4. (SEE CO. ENGR'S RECORDS.)
 "E"= MON. BOX AT W. 1/4 POST OF SEC. 33.
 "F"= MON. BOX AT N.E. CORNER OF E 1/4 post of SEC. 33.
 "G"= CORNER POST FOUND AT CENTER OF SEC. 33.
 "H"= R.R. SPIKE FOUND.
 "I"= R.R. SPIKE SET.
 "J"= 5/8" IRON BAR SET.

NOTES:

NOTE N°1: THE LINE "H"~"J" WAS ESTABLISHED USING THE EXIST. FENCE LINE AND THE RAILROAD SPIKE FOUND ON THE E. OF S.R. 29 AND A CORNER POST WHICH IS ON LINE BUT 7.8' NORTH OF THE INTERSECTION OF THIS LINE WITH THE N. LINE OF THE S. 1/2 OF THE S.W. 1/4 OF SEC. 33. IT IS APPARENT THAT TO SATISFY F.C. DICKE'S DEED CALL FOR 34 RODS IN WIDTH EAST & WEST, IF INTERPRETED IN ITS STRICTEST SENSE WOULD REQUIRE A LINE PARALLEL WITH THE NORTH-SOUTH 1/4 SEC. LINE OF THE S.W. 1/4 OF SEC. 33, AND 56' EAST OF SAID LINE. THIS LINE WOULD BE APPROX. 11' EAST OF POINT "J" AND APPROX. 26' EAST OF POINT "H". IT IS THIS SURVEYOR'S OPINION THAT THE BEST AVAILABLE EVIDENCE OF THE INTENDED LOCATION OF THE DIVISION LINE BETWEEN DICKE & WILLIAMS IS THE EXISTING LINE OF OCCUPANCY.

NOTE N°2: THE LINE OF OCCUPANCY IS APPROX. 8' NORTH OF N. LINE OF THE S. 1/2 OF THE S.W. 1/4 OF SEC. 33 AS SURVEYED. THERE IS, HOWEVER, A POSSIBILITY OF TITLE BY ADVERSE RIGHT OR POSSESSION. LEGAL ADVICE IS RECOMMENDED.

NOTE N°3: E.M. PHELPS S.D. WAS PLATTED IN 1869. APPROX. 3 LOTS APPEAR TO HAVE BEEN OCCUPIED AS PLATTED LOTS. THE OTHER LOTS HAVE BEEN FARMED. THE PLAT SHOWS DISTANCES ALONG THE N. R/W OF THE OLD ROAD OF 2041.38'. THIS DIST. IS FROM THE INTERSECTION OF THE W. LINE OF E. 1/2 OF THE N.E. 1/4 OF THE N.W. 1/4 OF SEC. 4 TO THE INTERSECTION OF THE S. LINE OF THE N.W. 1/4 OF THE N.E. 1/4 OF SEC. 4 WITH THE N. R/W LINE OF THE OLD ROAD. BY REESTABLISHING THESE LINES (SEE CITY ENGR'S RECORDS "H-123" & "H-285"), THE ACTUAL DIST. IS 2003.41'. THE SHORTAGE OF 37.97 WAS PRORATED EQUALLY TO EACH LOT. THIS PRORATION ESTABLISHES LOT CORNERS ALONG THE E. OF THE ROAD BUT DOES NOT PROVIDE DIRECTION FOR THE LINES. IT BECAME APPARENT AFTER LOCATING CORNER POSTS AND WHAT FEW LINES OF OCCUPANCY THAT EXIST TODAY THAT NO TWO LINES WERE PARALLEL, ALSO PERPENDICULAR LINES TO E DID NOT FIT OCCUPANCY. IN SUMMATION THE EAST LINE OF LOT 9 WAS ESTABLISHED USING THE PRORATED CORNER AND AN EXISTING FENCE POST THAT WAS BEING USED AS THE NORTHEASTERLY CORNER OF LOT 9.



LOCATION SKETCH

F.C. & C.R. DICKE
 V. 208 PG. 829

(SEE NOTE N°1)

PARCEL CONTAINS
 27.7444 A^c
 2.2353 A^c ROAD R/W.

SEC. 33 = 23.9149 A^c
 LOT 9 = 3.6945 A^c
 PARCEL SEC. 4 = 0.1350 A^c
 TOTAL = 27.7444 A^c

JOSEPH S. & L.T. WILLIAMS
 VOL. 156 PG. 337

R.E. & C.L. ALBRIGHT
 V. 188 PG. 955

WILLIAMS SURVEY

OF PART OF THE S.E. 1/4 OF THE S.W. 1/4 OF SECTION 33, T. 5 S., R. 4 E., (NOBLE TWP.) AND PART OF THE W. 1/2 OF THE N.E. 1/4 OF THE N.W. 1/4 OF SECTION 4, T. 6 S., R. 4 E., (ST. MARYS TWP.), ALSO LOT N° 9 OF THE E.M. PHELPS SUBDIVISION OF PART OF THE N.W. 1/4 OF THE N.E. 1/4 AND THE E. 1/2 OF THE N.E. 1/4 OF THE N.W. 1/4 OF SECTION 4, T. 6 S., R. 4 E., (ST. MARYS TWP.), AUGLAIZE COUNTY, OHIO.

NOVEMBER, 1984

SCALE: 1"=100'

SURVEYED BY: *Michael L. Weadock*
 MICHAEL L. WEADOCK
 REGISTERED SURVEYOR N° 6199