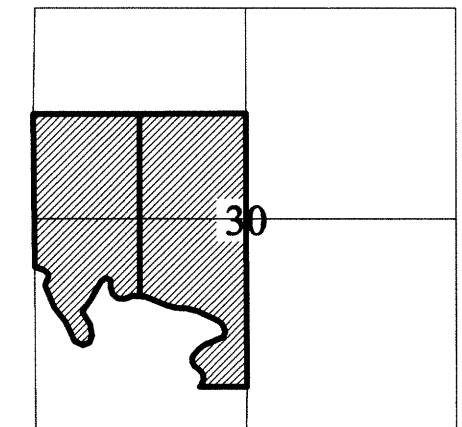


BOUNDARY SURVEY ROOF ESTATE

SITUATED IN:
E. 1/2 SECTION 30,
T-4-S, R-4-E,
SALEM TOWNSHIP,
AUGLAIZE COUNTY, OHIO

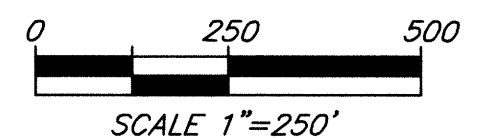
SECTION
MAP



LINE TABLE		
LINE	BEARING	LENGTH
L1	N40°31'45"E	29.16'
L2	N54°12'46"W	72.77'
L3	N09°08'02"W	39.84'
L4	N16°58'54"W	17.28'
L5	N63°10'26"W	152.66'
L6	N80°09'17"W	74.03'
L7	N87°52'20"W	7.78'
L8	N87°52'20"W	89.35'
L9	S70°57'12"W	114.22'
L10	N82°45'03"W	82.30'
L11	N51°03'34"W	89.70'
L12	N16°30'46"W	83.56'
L13	N03°06'30"E	83.69'
L14	N61°17'13"W	65.19'
L15	S55°40'01"W	80.06'
L16	S30°04'56"W	228.03'
L17	S32°43'33"W	216.91'
L18	S30°02'26"E	186.80'
L19	S11°12'04"E	145.19'
L20	S23°23'44"W	90.40'
L21	S69°22'22"W	88.47'
L22	N61°49'28"W	112.89'
L23	N25°07'37"W	262.18'
L24	N37°27'13"W	239.21'
L25	N22°17'48"W	293.43'
L26	N17°02'07"E	47.50'
L27	N23°38'27"E	52.34'
L28	N 03°18'13"E	52.03'
L29	N51°51'29"W	71.17'
L30	N69°36'51"W	123.47'

CURVE TABLE					
CURVE	LENGTH	RADIUS	DELTA	CHORD DIR.	CHORD DIST.
C1	223.23	135.00	94°44'23"	N06°50'30"W	198.65'
C2	157.06	112.06	80°18'23"	N02°04'05"W	144.52'
C3	279.66	354.39	45°12'50"	N54°46'45"E	272.46'
C4	163.44	492.18	19°01'35"	N64°28'40"E	162.69'
C5	55.94	50.00	64°06'20"	N22°55'06"E	53.07'
C6	120.93	150.00	46°11'28"	N40°04'40"W	117.68'
C7	396.38	904.00	25°07'21"	N75°44'06"W	393.21'
C8	128.52	300.00	24°32'44"	N76°01'25"W	127.54'
C9	274.55	1603.93	09°48'26"	N68°39'15"W	274.21'

F. SMITH, TR.
O.R. 454, PG. 2531



LEGEND:

- A STONE FOUND
- B RAILROAD SPIKE FOUND
- C CONCRETE POST
- D 5/8" IRON PIN FOUND
- E 5/8" IRON PIN SET
- F MONUMENT BOX FOUND

M. & B. NOLAN
O.R. 216, PG. 177

S. DICKE, TR.
O.R. 587, PG. 2560

SURVEY BY:
KENT #6792
FEB. 23, 2009
DWG: #5087



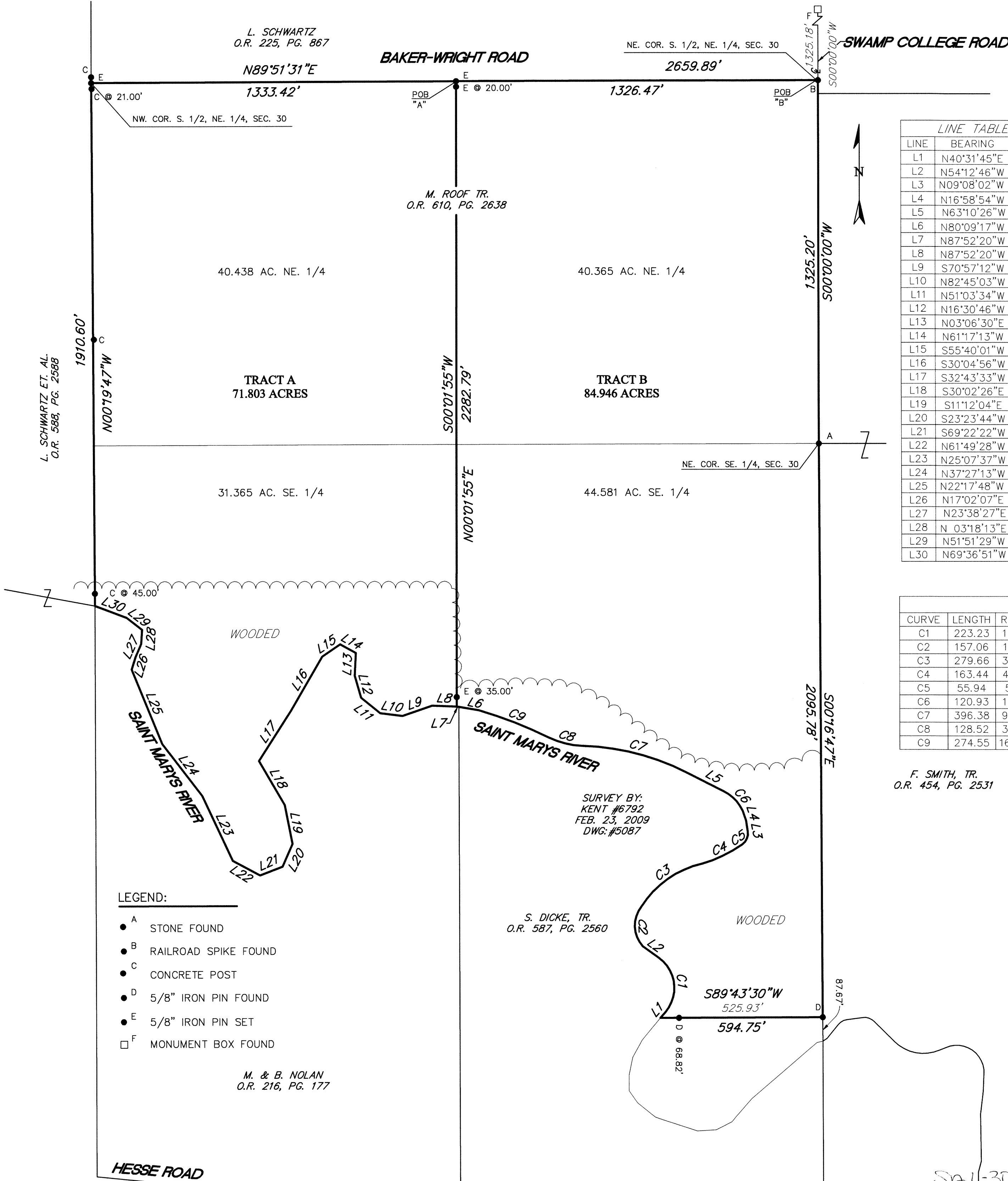
Leland D. Yoakam

LELAND D. YOAKAM, REG. SUR. #7676

THIS PLAT REPRESENTS AN ACTUAL FIELD SURVEY PERFORMED IN MAY OF 2013. ALL MARKERS ARE ACCURATE AS TO MATERIAL AND LOCATION AND ARE IN PLACE. ALL BEARINGS REFER TO THE TO THE EAST LINE OF THE NORTHEAST QUARTER AS BEING S 00°00'00" E.

**YOAKAM
SURVEYING**
9425 Sugar Creek Rd.
Harrod, Ohio 45850
Leland D. Yoakam, P.S. 7676
Phone (419) 643-2805

CLIENT: ROOF
COUNTY: AUGLAIZE
TOWNSHIP: SALEM
SURVEYED BY: L.D.Y.
SHEET: 1 OF 3
SCALE: 1"=250' DATE: MAY 2013



**YOAKAM
SURVEYING**
9425 Sugar Creek Road
Harrod, Ohio 45850
Leland D. Yoakam, P.S. #7676
Phone (419) 230-5177

CLIENT: ROOF ESTATE **TWP:** 4 SOUTH
COUNTY: AUGLAIZE **RANGE:** 4 EAST
TOWNSHIP: SALEM **QUARTER:** E 1/2
SECTION: 30 **DATE:** 5-3-13
SURVEYED BY: LDY
SHEET 2 of 3

TRACT A

The following described parcel of land is situated in the east half of Section 30, Township 4 South, Range 4 East, Salem Township, Auglaize County, Ohio and is more particularly described as follows:

Commencing at a railroad spike marking the northeast corner of the south half of the northeast quarter of Section 30;

thence with the centerline of Baker-Wright Road S 89° 51' 31" W, a distance of 1,326.47 feet to a 5/8 inch iron pin (set) at the POINT OF BEGINNING for the parcel to be described;

thence with a new division line S 00° 01' 55" W, a distance of 2,282.79 feet to a point in the centerline of the St. Marys River passing at 20.00 feet and 2,247.79 feet 5/8 inch iron pins (set);

thence with the centerline of the St. Marys River the following courses;

N 87° 52' 20" W, a distance of 89.35 feet to a point;
S 70° 57' 12" W, a distance of 114.22 feet to a point;
N 82° 45' 03" W, a distance of 82.30 feet to a point;
N 51° 03' 34" W, a distance of 89.70 feet to a point;
N 16° 30' 46" W, a distance of 83.56 feet to a point;
N 03° 06' 30" E, a distance of 83.69 feet to a point;
N 61° 17' 13" W, a distance of 65.19 feet to a point;
S 55° 40' 01" W, a distance of 80.06 feet to a point;
S 30° 04' 56" W, a distance of 228.03 feet to a point;
S 32° 43' 33" W, a distance of 216.91 feet to a point;
S 30° 02' 26" E, a distance of 186.80 feet to a point;
S 11° 12' 04" E, a distance of 145.19 feet to a point;
S 23° 23' 44" E, a distance of 90.40 feet to a point;
S 69° 22' 22" W, a distance of 88.47 feet to a point;
N 61° 49' 28" W, a distance of 112.89 feet to a point;
N 25° 07' 37" W, a distance of 262.18 feet to a point;
N 37° 27' 13" W, a distance of 239.21 feet to a point;
N 22° 17' 48" W, a distance of 293.43 feet to a point;
N 17° 02' 07" E, a distance of 47.50 feet to a point;
N 23° 38' 27" E, a distance of 52.34 feet to a point;
N 03° 18' 13" E, a distance of 52.03 feet to a point;
N 51° 51' 29" W, a distance of 71.17 feet to a point;
N 69° 36' 51" W, a distance of 123.47 feet to a point;

thence leaving said river, N 00° 19' 47" W, a distance of 1,910.60 feet to a 5/8 inch iron pin (set) in the centerline of Baker-Wright Road at the northwest corner of the south half of the northeast quarter of Section 30 passing at 45.00 feet and 1,889.60 feet concrete posts (found);

thence with the centerline of Baker-Wright Road N 89° 51' 31" E, a distance of 1,333.42 feet to the POINT OF BEGINNING containing 71.803 acres, more or less, subject to all legal highways and easements of record. This description is based on a field survey performed in May, 2013 and was prepared by Leland D. Yoakam L.S. No. 7676. All markers are accurate as to material and location and are in place. All bearings refer to the east line of the northeast quarter of Section 30 as being S 00° 00' 00" E

Prior Deed: O.R. 610 Page 2638


Leland D. Yoakam P.L.S. No. 7676

**YOAKAM
SURVEYING**
9425 Sugar Creek Road
Harrod, Ohio 45850
Leland D. Yoakam, P.S. #7676
Phone (419) 230-5177

**CLIENT: ROOF ESTATE TWP: 4 SOUTH
COUNTY: AUGLAIZE RANGE: 4 EAST
TOWNSHIP: SALEM QUARTER: E 1/2
SECTION: 30 DATE: 5-3-13
SURVEYED BY: LDY
SHEET 3 of 3**

TRACT B

The following described parcel of land is situated in the east half of Section 30, Township 4 South, Range 4 East, Salem Township, Auglaize County, Ohio and is more particularly described as follows:

Beginning at a railroad spike (found) marking the northeast corner of the south ½ of the northeast quarter of Section 30;

thence S 00° 00' 00" E, a distance of 1,325.20 feet to a stone (found) marking the northeast corner of the southeast quarter of Section 30;

thence with the east line of the southeast quarter, S 00° 16' 47" E, a distance of 2,095.78 feet to a 5/8 inch iron pin (found);

thence S 89° 43' 30" W, a distance of 594.75 feet to a point in the centerline of the St. Marys River passing at 525.93 feet a 5/8 inch iron pin (found);

thence with the centerline of the St. Marys River the following courses:

N 40° 31' 45" E, a distance of 29.16 feet to a point;

thence with a curve to the left having a delta angle of 94° 44' 23", a length of 223.23 feet, a radius of 135.00 feet and a chord bearing N 06° 50' 30" W, a distance of 198.65 feet to a point;

N 54° 12' 46" W, a distance of 72.77 feet to a point;

thence with a curve to the right having a delta angle of 80° 18' 23", a length of 157.06 feet, a radius of 112.06 feet and a chord bearing N 02° 04' 05" W, a distance of 144.52 feet to a point;

thence with a curve to the right having a delta angle of 45° 12' 50", a length of 279.66 feet, a radius of 354.39 feet and a chord bearing N 54° 46' 45" E, a distance of 272.46 feet to a point;

thence with a curve to the right having a delta angle of 19° 01' 35", a length of 163.44 feet, a radius of 492.18 feet and a chord bearing N 64° 28' 40" E, a distance of 162.69 feet to a point;

thence with a curve to the left having a delta angle of 64° 06' 20", a length of 55.94 feet, a radius of 50.00 feet and a chord bearing N 22° 55' 06" E, a distance of 53.07 feet to a point;

thence N 09° 08' 02" W, a distance of 39.84 feet to a point;

thence N 16° 58' 54" W, a distance of 17.28 feet to a point;

thence with a curve to the left having a delta angle of 46° 11' 28", a length of 120.93 feet, a radius of 150.00 feet and a chord bearing N 40° 04' 40" W, a distance of 117.68 feet to a point;

thence N 63° 10' 26" W, a distance of 152.66 feet to a point;

thence with a curve to the left having a delta angle of 25° 07' 21", a length of 396.38 feet, a radius of 904.00 feet and a chord bearing N 75° 44' 06" W, a distance of 393.21 feet to a point;

thence with a curve to the right having a delta angle of 24° 32' 44", a length of 128.52 feet, a radius of 300.00 feet and a chord bearing N 76° 01' 25" W, a distance of 127.54 feet to a point;

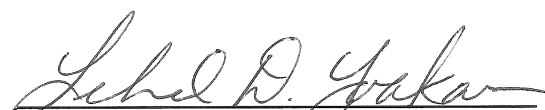
thence with a curve to the left having a delta angle of 09° 48' 26", a length of 274.55 feet, a radius of 1,603.93 feet and a chord bearing N 68° 39' 15" W, a distance of 274.21 feet to a point;

thence N 80° 09' 17" W, a distance of 74.03 feet to a point;

thence N 87° 52' 20" W, a distance of 7.78 feet to a point;

thence leaving the centerline of said river N 00° 01' 55" E, a distance of 2,282.79 feet to a 5/8 inch iron pin (set) in the centerline of Baker-Wright Road, passing at 35.00 feet and 2,262.79 feet 5/8 inch iron pins (set);

thence with the centerline of Baker-Wright Road N 89° 51' 31" E, a distance of 1,326.47 feet to the POINT OF BEGINNING containing 84.946 acres, more or less, subject to all legal highways and easements of record. This description is based on a field survey performed in May, 2013 and was prepared by Leland D. Yoakam L.S. No. 7676. All markers are accurate as to material and location and are in place. All bearings refer to the east line of the northeast quarter of Section 30 as being S 00° 00' 00" E
Prior Deed: O.R. 610, Page 2638


Leland D. Yoakam P.L.S. No. 7676