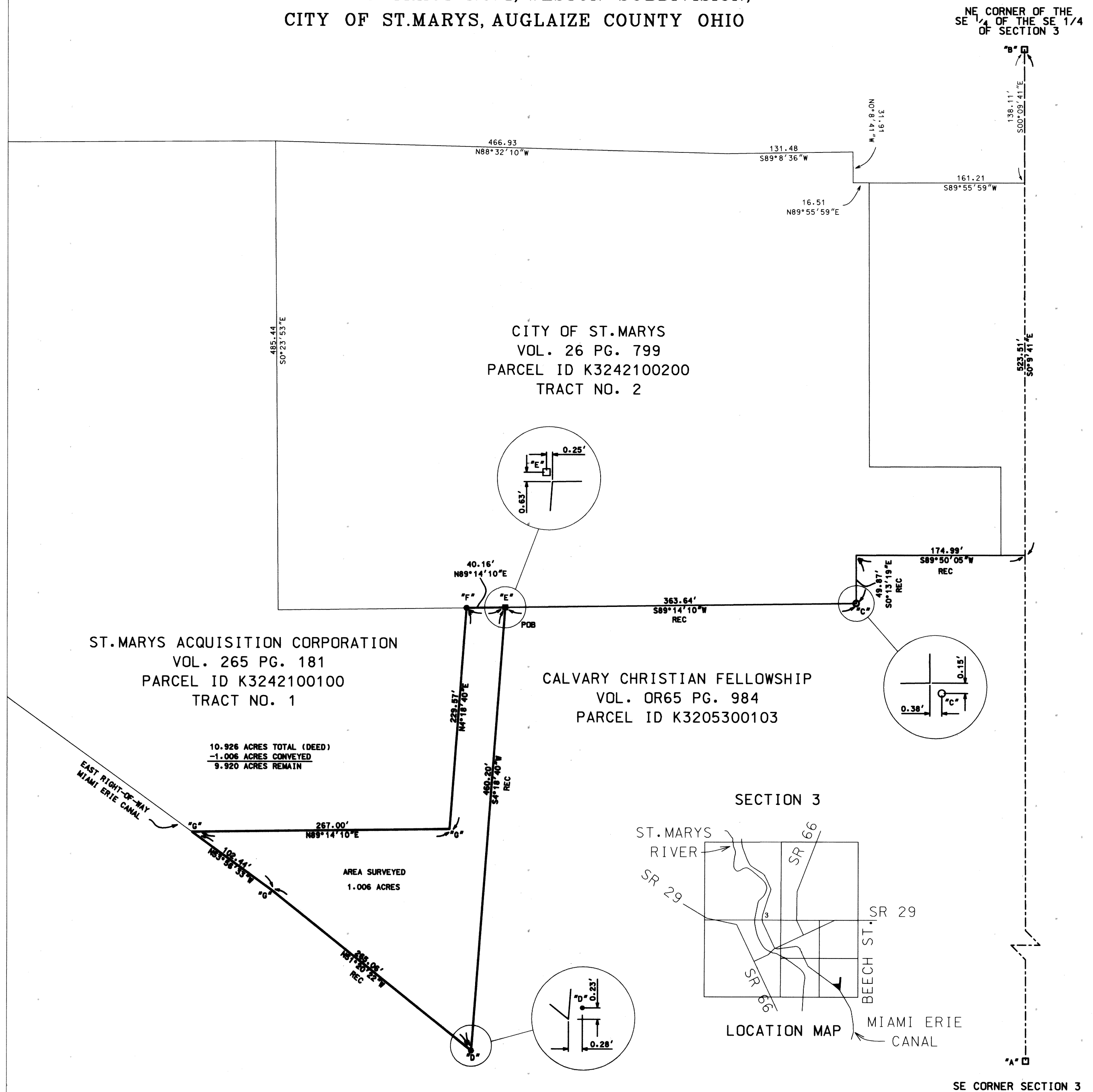


BOUNDRY SURVEY FOR THE ST.MARYS AQUISITION CORPORATION
PART OF TRACT NO.1, WESTON SUBDIVISION,
CITY OF ST.MARYS, AUGLAIZE COUNTY OHIO



DESCRIPTION

Being part of Weston Subdivision Tract #1, Town 5 South, Range 4 East, St. Marys Township, Auglaize County, Ohio, and being more particularly described as follows:

Commencing for reference at a PK Nail at the Northeast corner of the Southeast 1/4 of the Southeast 1/4 of Section 3, T6S, R4E, St. Marys Township, Auglaize County, Ohio, said point being on the centerline of Beech Street; Thence S0°09'41"E, along the East Line of said Section 3, and the centerline of Beech Street, a distance of five hundred twenty-three and 51/100 (523.51) feet to a point; Thence, S89°50'05"W, a distance of one hundred seventy-four and 99/100 (174.99) feet to a point; Thence, S00°13'19"E, a distance forty-nine and 87/100 (49.87) feet to a concrete monument; Thence, S89°14'10"W, along the South property line of Tract #2 of Weston Subdivision, a distance of three hundred sixty-three and 64/100 (363.64) feet to a corner post, said point being the PLACE OF BEGINNING for the parcel to be described herein;

Thence, S04°18'40"W, along the East property line of Tract #1 of Weston Subdivision, a distance of four hundred sixty and 20/100 (460.20) feet to a 5/8" iron bar;

Thence, N51°20'22"W, along the East Right-of-Way line of the Miami and Erie Canal, a distance of two hundred sixty-five and 06/100 (265.06) feet to a point;

Thence, N53°56'33"W, along the East Right-of-Way line of the Miami Erie Canal, a distance of one hundred two and 44/100 (102.44) feet to a point;

Thence, N89°14'10"E, a distance of two hundred sixty-seven and 00/100 (267.00) feet to a point;

Thence, N04°18'40"E, a distance of two hundred twenty-nine and 57/100 (229.57) feet to a 5/8" iron bar set;

Thence, N89°14'10"E, along the south property line of Weston subdivision tract #2, a distance of forty and 16/100 (40.16) feet to the PLACE OF BEGINNING; containing 1.006 acres, more or less.

SURVEY REFERENCE

"WESTON SUBDIVISION" SURVEYED BY MICHAEL L. WEADOCK, PS 6199 DATED NOVEMBER 1980 AND FILED IN AUGLAIZE COUNTY RECORDS, BOOK STM 3-3 AND CITY OF ST.MARYS ENGINEERS RECORDS H-459

LEGEND

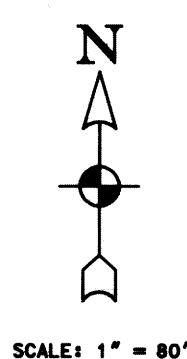
- "A" = RAILROAD SPIKE FOUND
- "B" = PK NAIL FD
- "C" = CONCRETE MONUMENT FD
- "D" = 5/8" IRON/BAR FD
- "E" = CORNER POST FD
- "F" = 5/8" IRON/BAR W/CAP SET
- "G" = POINT IN WATER

CERTIFICATION

This plat is a result of a survey made under my supervision in accordance with Sec 4733-37 O.A.C. "Minimum standards for Boundary Surveys in the State of Ohio."

The measurements are certified correct, Iron Pins and Monuments are set as shown. Curved distances are measured on the arc.

Thomas J. Hitchcock
Ohio Professional
Surveyor #8272



STM-3-25