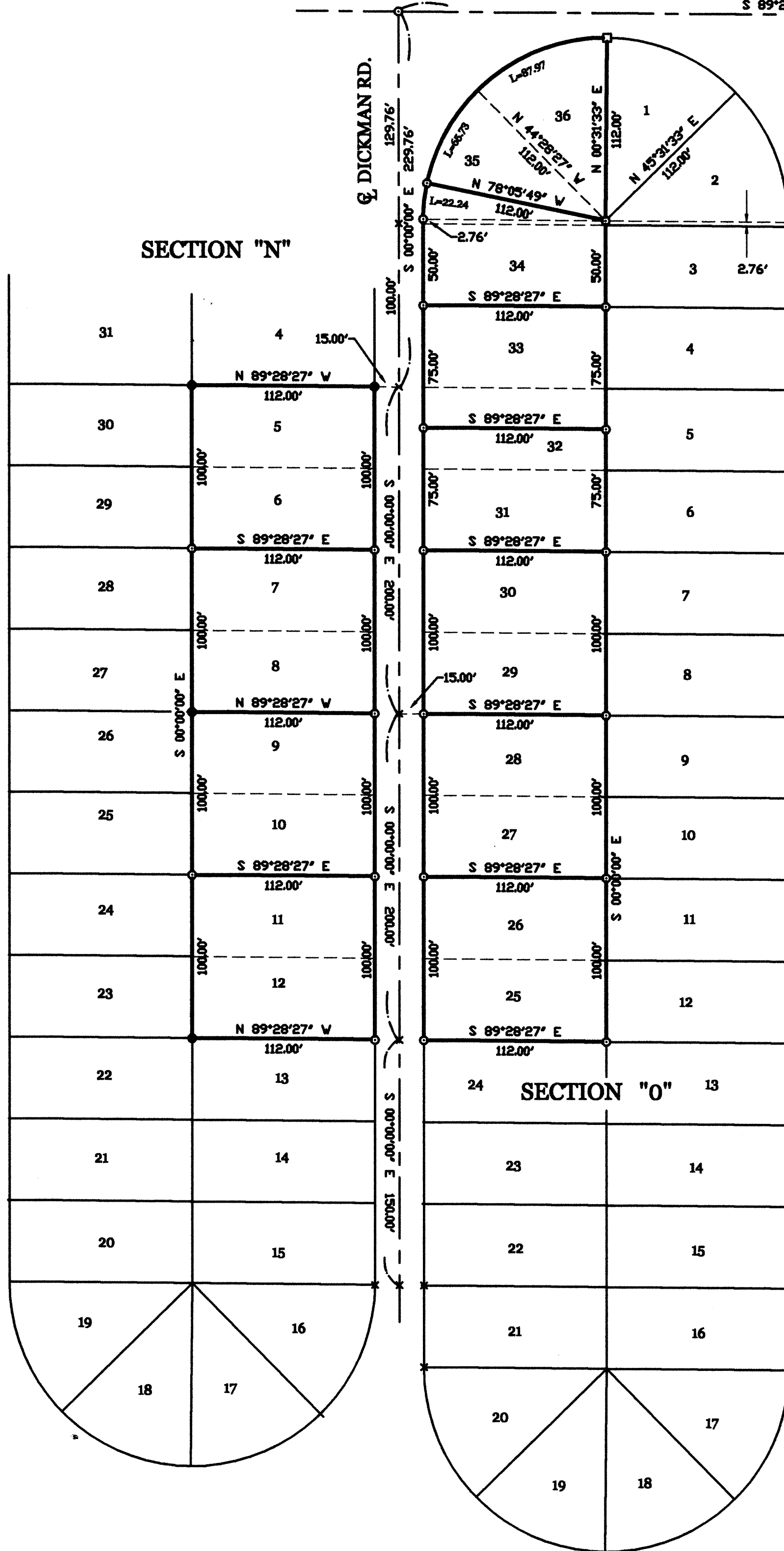


SURVEY OF LOTS 5-12 IN SECTION "N" AND LOTS 25-36 IN SECTION "O" OF THE SANDY BEACH ALLOTMENT IN SEC. 6, ST. MARYS TOWNSHIP, AUGLAIZE COUNTY, OHIO.

APRIL 24, 2003

SCALE 1" = 60'



LEGEND

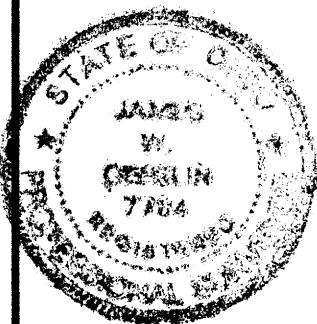
- ♂ = RAILROAD SPIKE FOUND.
- = 5/8 INCH IRON BAR FOUND.
- ⊗ = SPINDLE FOUND.
- = 5/8 INCH IRON BAR SET.
- × = WOOD LATH SET.
- = CATCH BASIN AT LOT COR.

STM-6-5

**GEESLIN
LAND SURVEYING**

P.O. BOX 422
CELINA, OHIO

PHONE (419) 586-6155
FAX (419) 678-9332



SURVEYED BY

James W. Geeslin
JAMES W. GEESLIN
P.S. No. 7764