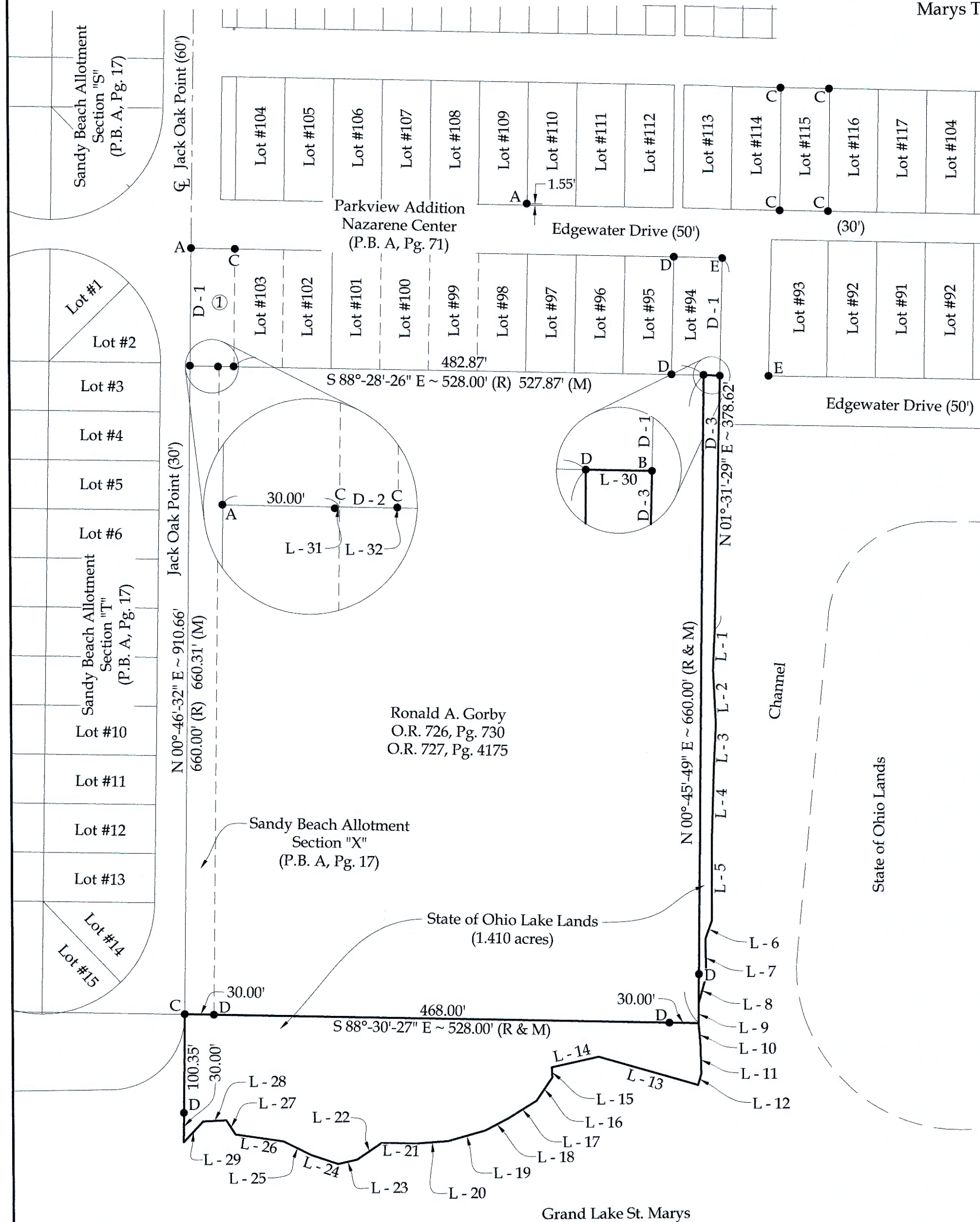


Survey of 1.410 acres of the State of Ohio Lake Lands and being a part  
of the NE  $\frac{1}{4}$  of the SW  $\frac{1}{4}$  of Section 6, Town 6 South, Range 4 East, St.  
Marys Township, Auglaize County, Ohio.



Line Data

L - 1 = S 02°-34'-48" W ~ 41.69'	L - 19 = S 74°-50'-04" W ~ 40.01'
L - 2 = S 02°-47'-06" E ~ 53.85'	L - 20 = S 86°-11'-52" W ~ 32.44'
L - 3 = S 02°-45'-41" W ~ 45.06'	L - 21 = N 88°-37'-49" W ~ 36.13'
L - 4 = S 02°-03'-36" W ~ 74.61'	L - 22 = S 55°-52'-17" W ~ 29.89'
L - 5 = S 00°-07'-13" W ~ 80.97'	L - 23 = S 77°-47'-49" W ~ 20.09'
L - 6 = S 20°-02'-45" W ~ 19.96'	L - 24 = N 71°-22'-31" W ~ 29.10'
L - 7 = S 00°-18'-01" E ~ 39.70'	L - 25 = N 63°-25'-40" W ~ 31.72'
L - 8 = S 16°-14'-35" W ~ 27.63'	L - 26 = N 81°-27'-58" W ~ 50.07'
L - 9 = S 00°-45'-49" W ~ 20.01'	L - 27 = N 32°-42'-14" W ~ 17.21'
L - 10 = S 04°-33'-13" E ~ 23.79'	L - 28 = S 87°-57'-58" W ~ 23.80'
L - 11 = S 01°-30'-24" E ~ 27.57'	L - 29 = S 43°-40'-34" W ~ 29.05'
L - 12 = S 16°-36'-02" W ~ 11.97'	L - 30 = S 88°-28'-26" E ~ 17.00'
L - 13 = N 73°-55'-12" W ~ 106.08'	L - 31 = S 75°-37'-06" W ~ 1.26'
L - 14 = S 77°-58'-16" W ~ 49.46'	L - 32 = N 52°-44'-06" W ~ 0.23'
L - 15 = S 02°-58'-30" E ~ 10.35'	
L - 16 = S 34°-37'-45" W ~ 28.58'	
L - 17 = S 58°-55'-14" W ~ 33.99'	
L - 18 = S 62°-29'-05" W ~ 26.57'	

Legend

- A = Existing  $\frac{1}{2}$ " Iron Pipe  
B = Existing 2" Iron Pipe  
C = Existing #5 Rebar  
D = Set #5 Rebar  
E = Set Mag Nail

Distance Data

- D - 1 = 120.00' (R & M)  
D - 2 = 15.00'  
D - 3 = 258.62'

Property Information

- ① James N. & Laura M. Heckler  
O.R. 728, Pg. 869

Note: All distances called for on this plat are measured distances  
unless otherwise noted.

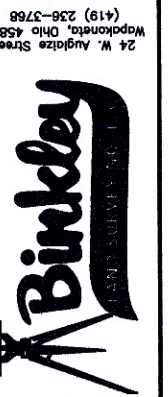
BASIS OF BEARINGS: The system of bearings for this plat and legal  
description is based on the Ohio State Plane - North Coordinate  
System NAD 83 (2011).

This plat is recorded in Survey Book "STM-6-11",  
in the Auglaize County Engineer's Office.



This plat and the accompanying legal descriptions  
represent an actual boundary survey completed  
under my direct supervision on June 12, 2024.

Kyle J. Binkley, P.S. #8587



Prepared By:

Boundary Survey

Ronald A. Gorby  
350 Jack Oak Point  
St. Marys, OH 45885

Surveyed By: T.J.S./M.A.B.  
Checked By: K.J.B.

Date: 06/12/2024  
Drawn By: K.J.B.

1  
4

STM-6-11



## LEGAL DESCRIPTION

Being a part of the State of Ohio Lake Lands and being a part of the NE  $\frac{1}{4}$  of the SW  $\frac{1}{4}$  of Section 6, Town 6 South, Range 4 East, St. Marys Township, Auglaize County, Ohio, more particularly described as follows:

Beginning at an existing 2" Iron Pipe at the SE corner of Lot #94 of the Parkview Addition Nazarene Center (P.B. A, Pg. 71); thence the following courses:

1. S 01°-31'-29" W with the extension of the E line of said Lot #94 and the W line of Edgewater Drive, 258.62' to a point at the approximate shoreline of Grand Lake St. Marys;
2. S 02°-34'-48" W with the approximate shoreline of Grand Lake St. Marys, 41.69' to a point;
3. S 02°-47'-06" E with the approximate shoreline of Grand Lake St. Marys, 53.85' to a point;
4. S 02°-45'-41" W with the approximate shoreline of Grand Lake St. Marys, 45.06' to a point;
5. S 02°-03'-36" W with the approximate shoreline of Grand Lake St. Marys, 74.61' to a point;
6. S 00°-07'-13" W with the approximate shoreline of Grand Lake St. Marys, 80.97' to a point;
7. S 20°-02'-45" W with the approximate shoreline of Grand Lake St. Marys, 19.96' to a point;
8. S 00°-18'-01" E with the approximate shoreline of Grand Lake St. Marys, 39.70' to a point;
9. S 16°-14'-35" W with the approximate shoreline of Grand Lake St. Marys, 27.63' to a point;
10. S 00°-45'-49" W with the approximate shoreline of Grand Lake St. Marys, 20.01' to a point;
11. S 04°-33'-13" E with the approximate shoreline of Grand Lake St. Marys, 23.79' to a point;
12. S 01°-30'-24" E with the approximate shoreline of Grand Lake St. Marys, 27.57' to a point;
13. S 16°-36'-02" W with the approximate shoreline of Grand Lake St. Marys, 11.97' to a point;

14. N 73°-55'-12" W with the approximate shoreline of Grand Lake St. Marys, 106.08' to a point;
15. S 77°-58'-16" W with the approximate shoreline of Grand Lake St. Marys, 49.46' to a point;
16. S 02°-58'-30" E with the approximate shoreline of Grand Lake St. Marys, 10.35' to a point;
17. S 34°-37'-45" W with the approximate shoreline of Grand Lake St. Marys, 28.58' to a point;
18. S 58°-55'-14" W with the approximate shoreline of Grand Lake St. Marys, 33.99' to a point;
19. S 62°-29'-05" W with the approximate shoreline of Grand Lake St. Marys, 26.57' to a point;
20. S 74°-50'-04" W with the approximate shoreline of Grand Lake St. Marys, 40.01' to a point;
21. S 86°-11'-52" W with the approximate shoreline of Grand Lake St. Marys, 32.44' to a point;
22. N 88°-37'-49" W with the approximate shoreline of Grand Lake St. Marys, 36.13' to a point;
23. S 55°-52'-17" W with the approximate shoreline of Grand Lake St. Marys, 29.89' to a point;
24. S 77°-47'-49" W with the approximate shoreline of Grand Lake St. Marys, 20.09' to a point;
25. N 71°-22'-31" W with the approximate shoreline of Grand Lake St. Marys, 29.10' to a point;
26. N 63°-25'-40" W with the approximate shoreline of Grand Lake St. Marys, 31.72' to a point;
27. N 81°-27'-58" W with the approximate shoreline of Grand Lake St. Marys, 50.07' to a point;
28. N 32°-42'-14" W with the approximate shoreline of Grand Lake St. Marys, 17.21' to a point;
29. S 87°-57'-58" W with the approximate shoreline of Grand Lake St. Marys, 23.80' to a point;

- 30. S 43°-40'-34" W with the approximate shoreline of Grand Lake St. Marys, 29.05' to a point;
- 31. N 00°-46'-32" E, 130.35' to an existing #5 Rebar at the SW corner of Section 'X' of Sandy Beach Allotment (P.B. A, Pg. 17) and the E right-of-way line of Jack Oak Point, passing a set #5 Rebar at 30.00';
- 32. S 88°-30'-27" E, 528.00' to a point on the approximate shoreline of Grand Lake St. Marys, passing a set #5 Rebar at the SE corner of said Section 'X' at 30.00' and a set #5 Rebar at 498.00';
- 33. N 00°-45'-49" E, 660.00' to a #5 Rebar set on the S line of said Lot #94, passing a set #5 Rebar at 50.00';
- 34. S 88°-28'-26" E with the S line of said Lot #94, 17.00' to the POINT OF BEGINNING.

The above-described parcel contains 1.410 acres, more or less, subject to all legal highways and easements of record.

The system of bearings for this legal description is based on the Ohio State Plane-North Coordinate System NAD83 (2011). This legal description and accompanying plat represent an actual boundary survey completed under the direct supervision of Kyle J. Binkley, P.S. #8587 on June 12, 2024. All markers called for above are in place.

