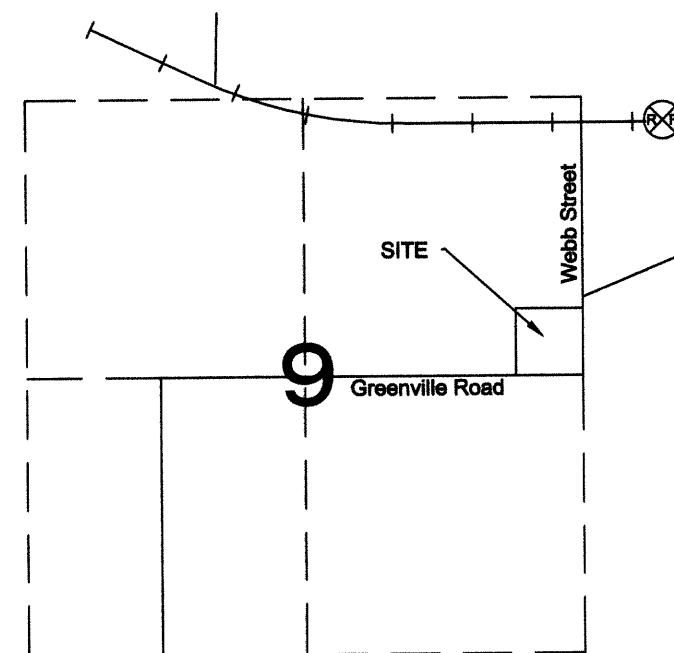


Elm Grove Cemetery

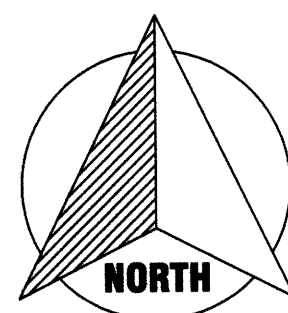
Part of the NE 1/4 of Section 9,
Town-6-South, Range-4-East,
St. Marys Township,
City of St. Marys,
Auglaize County, Ohio



SCHWIETZMAN
OR Volume 481, Page 822
Survey Book G, Page 277

LEGEND

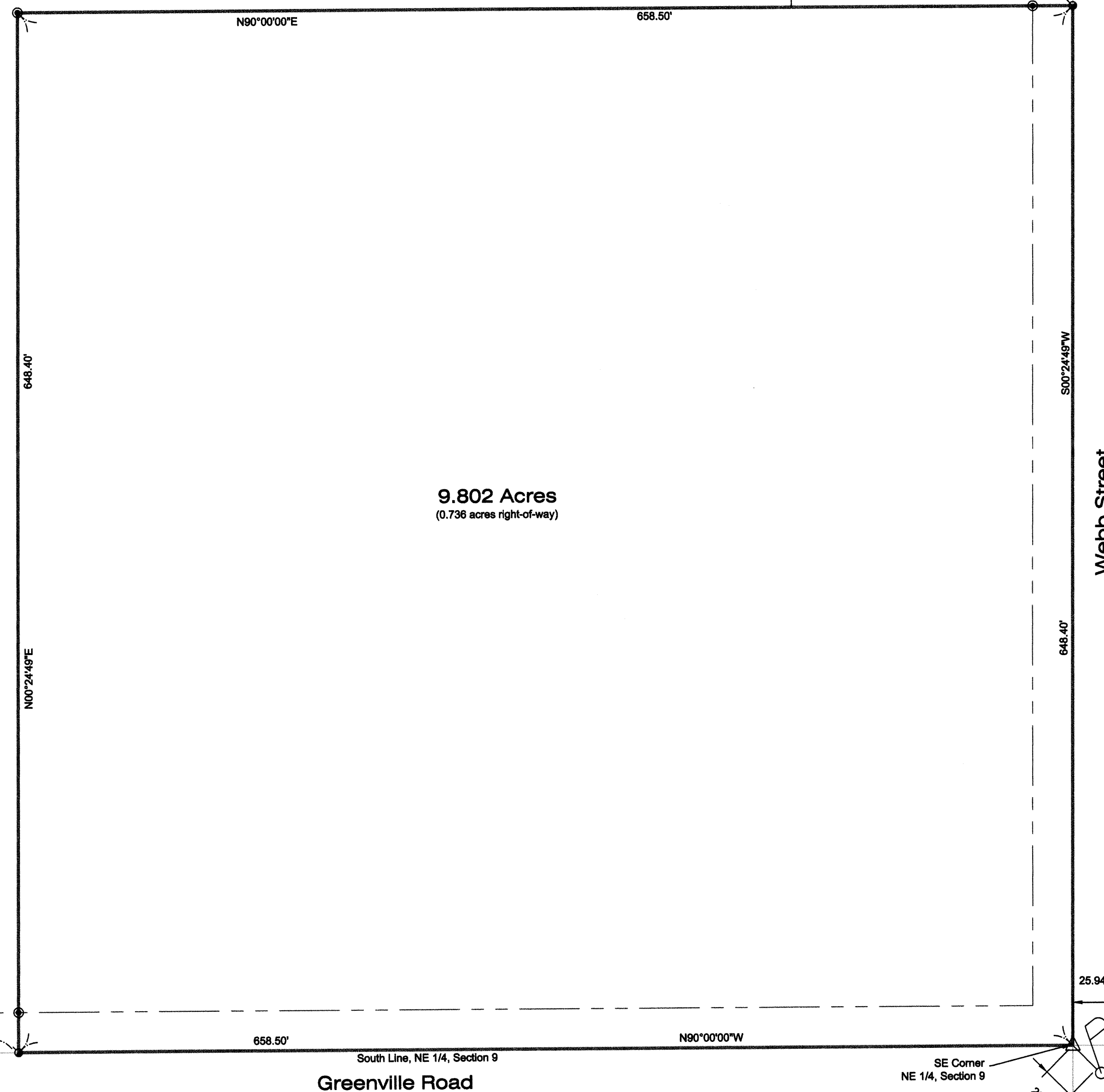
- △ Stone (found) 2' deep
- △ Stone (found) w/drill hole
- 1" Iron Bar (found)
- ⊕ Railroad Spike (found)
- Ⓜ mag-nail in Power Pole
- ⊙ 5/8" Re-Rod w/cap (set)
- Ⓜ Mag-Nail (set)



GRAPHIC SCALE



(IN FEET)
1 inch = 60 ft.



I hereby certify that this plat is representative of a field survey conducted under my personal supervision.

James M. Kent, Professional Surveyor No. 6792

kent surveying, inc.

acad - Elm Grove Cemetery
drawing #5179
March 25, 2010

STM-9-2