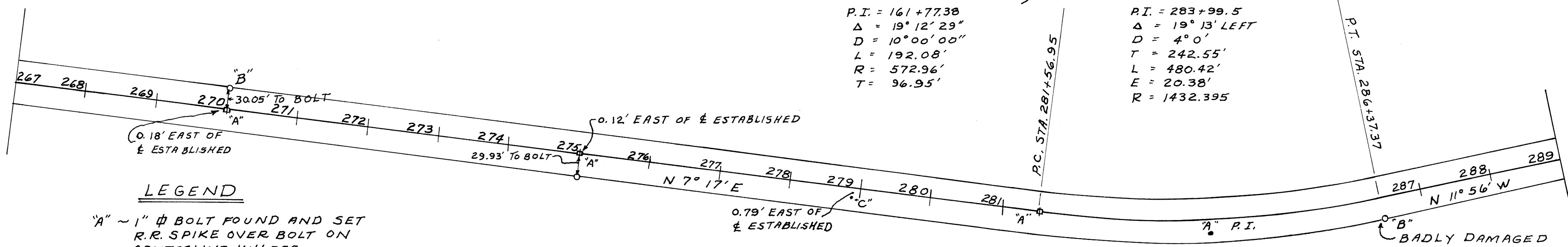


STATION EQUATION

STATE'S 252+21.2 = CITY'S 130+00

NOTE: CITY HAS Stationing every 100' from WAESCH RD. (SEE EQUATION) TO SOUTH PARK DRIVE USING A 10° CURVE AS SHOWN. (CITY STATIONING ARE P.K. NAILS BUILDING AS E GOES NORTH.



CITY (CITY STATIONING)

P.I. = 161+77.38
 $\Delta = 19^\circ 12' 29''$
 $D = 10^\circ 00' 00''$
 $L = 192.08'$
 $R = 572.96'$
 $T = 96.95'$

STATE

P.I. = 283+99.5
 $\Delta = 19^\circ 13' \text{ LEFT}$
 $D = 4^\circ 0'$
 $T = 242.55'$
 $L = 480.42'$
 $E = 20.38'$
 $R = 1432.395$

LEGEND

"A" ~ 1" ϕ BOLT FOUND AND SET R.R. SPIKE OVER BOLT ON CENTERLINE UNLESS OTHERWISE NOTED.

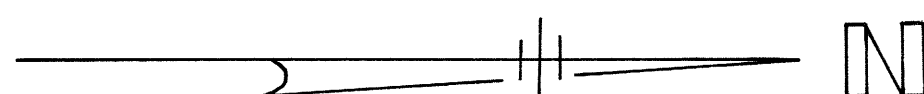
"B" ~ CONCRETE RIGHT OF WAY MONUMENT FOUND

"C" ~ R.R. SPIKE FOUND

"D" ~ P.K. NAIL FOUND

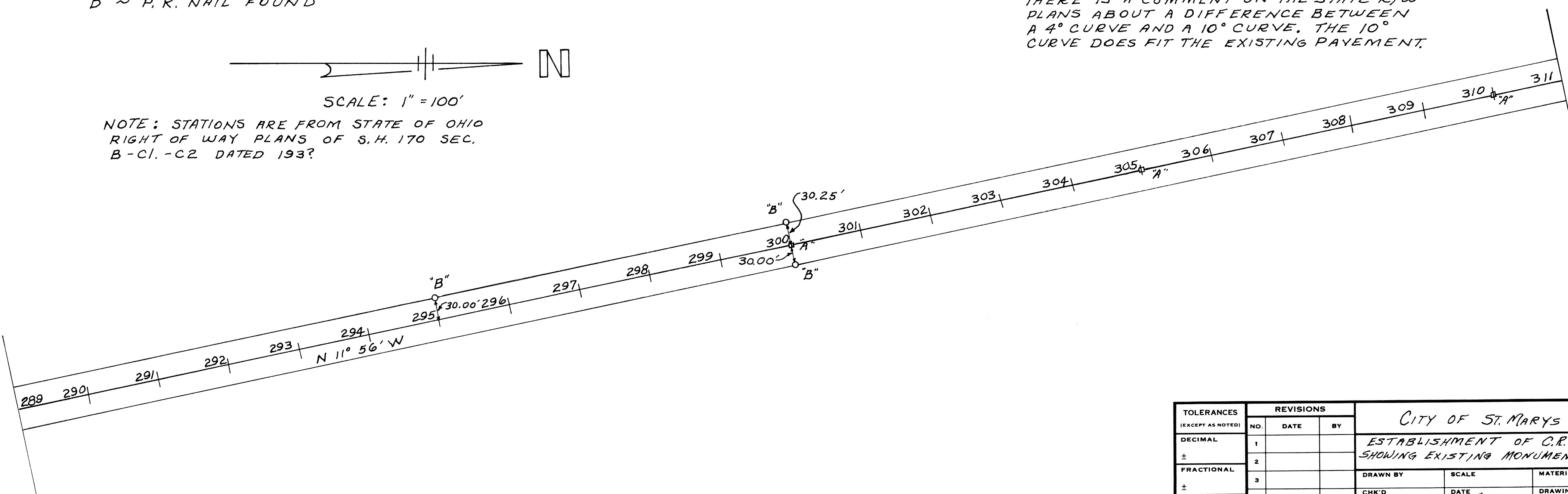
NOTE ON CURVE DATA:

THE STATE CURVE DATA FOR A 4° CURVE DOES NOT FIT THE EXISTING PAVEMENT. THERE IS A COMMENT ON THE STATE R/W PLANS ABOUT A DIFFERENCE BETWEEN A 4° CURVE AND A 10° CURVE. THE 10° CURVE DOES FIT THE EXISTING PAVEMENT.



SCALE: 1" = 100'

NOTE: STATIONS ARE FROM STATE OF OHIO RIGHT OF WAY PLANS OF S.H. 170 SEC. B-C1.-C2 DATED 193?



TOLERANCES (EXCEPT AS NOTED)	REVISIONS			CITY OF ST. MARYS		
	NO.	DATE	BY	ESTABLISHMENT OF C.R. 66-A SHOWING EXISTING MONUMENTATION		
DECIMAL	1			DRAWN BY	SCALE	MATERIAL
±	2			CHK'D	DATE 8-1986	DRAWING NO.
FRACTIONAL	3			TRACED	APP'D	15
±	4			10-24-86		
ANGULAR	5					
±						