

SURVEY OF PART OF THE N.E. 1/4 OF THE S.W. 1/4, AND PART OF THE N.W. 1/4 OF THE S.E. 1/4 OF SECTION 15, TOWN 6 SOUTH, RANGE 4 EAST, (ST. MARYS TWP.), AUGLAIZE COUNTY, OHIO

NOVEMBER 1986 SCALE: 1" = 100'

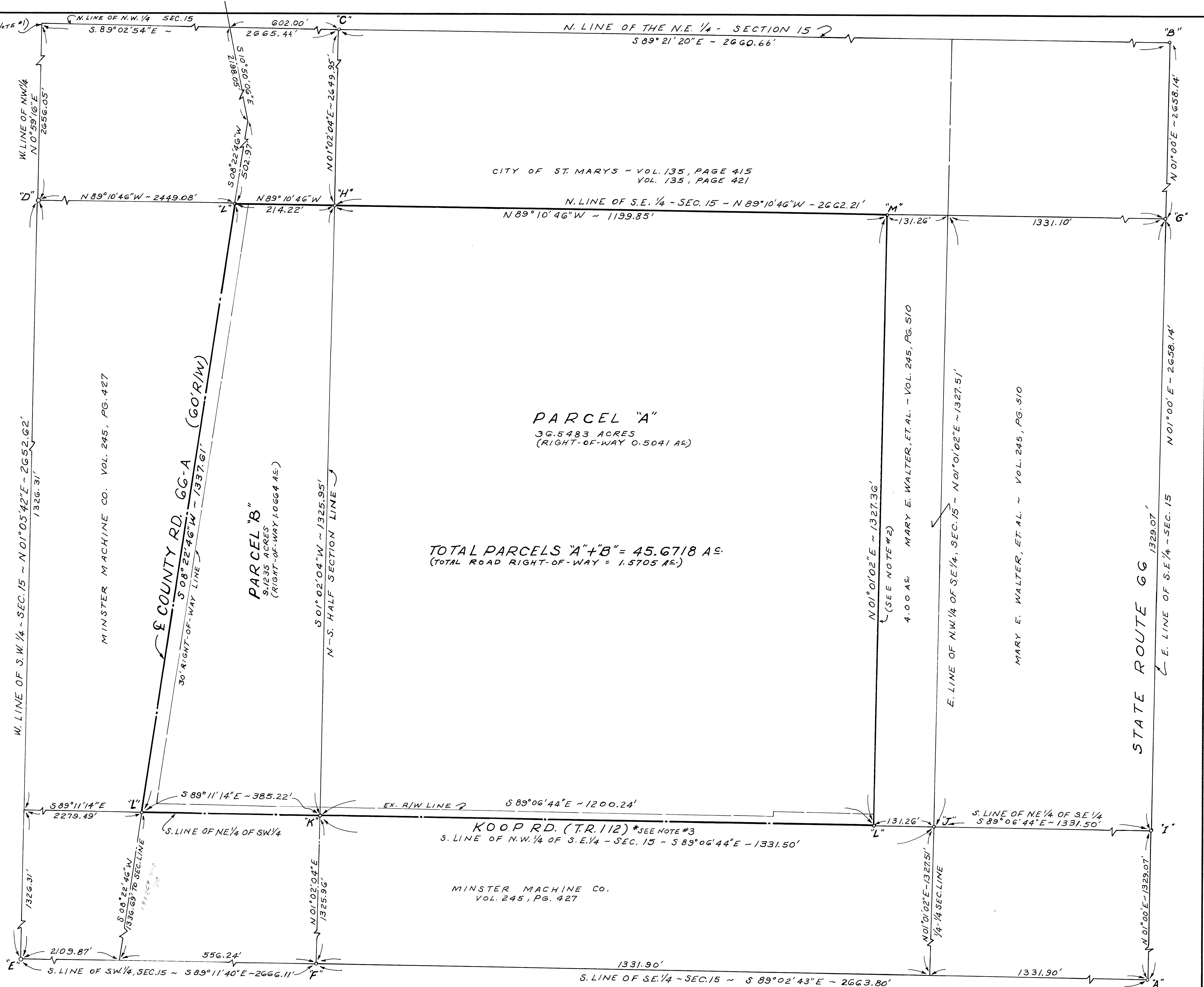
SURVEYED BY: *Michael L. Weadock*
MICHAEL L. WEADOCK
PROFESSIONAL SURVEYOR
NO. 6199

LEGEND

- "A" = STONE FOUND AT S.E. CORNER SECTION 15, (SEE WALTER SURVEY BY GORDON GEESLIN, MARCH 1976.
- "B" = STONE FOUND AT N.E. CORNER SECTION 15 (SEE MOORMAN SURVEY BY MICHAEL L. WEADOCK, SEPT. 1982)
- "C" = STONE FOUND AT N. 1/4 POST, SECTION 15, SET 5/8" IRON BAR OVER STONE. (STONE APPROXIMATELY 18" SQUARE, 2'-6" DEEP, 5" THICK)
- "D" = ANGLE IRON CORNER POST FOUND AT W. 1/4 POST SECTION 15.
- "E" = MONUMENT BOX AT S.W. CORNER SECTION 15.
- "F" = STONE FOUND AT S. 1/4 POST SECTION 15 (STEEL I-BEAM CORNER POST 2.10' EAST AND 0.96' SOUTH OF STONE)
- "G" = 5/8" IRON BAR SET AT E. 1/4 POST SECTION 15 (STONE DUG FOR, NOT FOUND).
- "H" = 5/8" IRON BAR SET AT CENTER OF SECTION 15 (STONE DUG FOR, NOT FOUND).
- "I" = 5/8" IRON BAR SET AT N.E. CORNER OF THE S.E. 1/4 OF S.E. 1/4, SECTION 15.
- "J" = MINE SPIKE SET AND PUNCHED AT THE S.E. CORNER OF THE N.W. 1/4 OF THE S.E. 1/4, SECTION 15.
- "K" = MINE SPIKE SET AND PUNCHED AT THE S.W. CORNER OF THE N.W. 1/4 OF THE S.E. 1/4, SECTION 15.
- "L" = MINE SPIKE SET AND PUNCHED.
- "M" = 5/8" IRON BAR SET (FOUND 1/2" IRON BAR 6.50' EAST AND 6.74' NORTH OF BAR SET, - SEE STIMMEL SURVEY FOR N. DUNLAP, APRIL 1974.

NOTES

- THE N.W. CORNER OF SECTION 15 WAS ESTABLISHED BY LOCATING POINTS SET ON A SURVEY FOR JOHN SCHULTZ BY GORDON GEESLIN IN JANUARY OF 1982. THE ACTUAL SECTION CORNER IS LOCATED IN THE MIAMI-ERIE CANAL FEEDER.
- THE EAST LINE OF PARCEL "A" AS ESTABLISHED BY THIS SURVEY LIES 9 FEET ± WEST OF THE EXISTING FENCE LINE AND APPARENT LINE OF OCCUPANCY. (DEED VOLUME 77, PAGE 227. W. H. KOOP TO JOHN WALTER, CONVEYS 4.00 ACRES OFF THE EAST SIDE OF THE N.W. 1/4 OF THE S.E. 1/4 OF SECTION 15. ALSO DEED VOLUME 245, PAGE 427, NORMAN L. AND MABLE JEAN DUNLAP TO THE MINSTER MACHINE COMPANY, CONVEYS ALL OF THE N.W. 1/4 OF THE S.E. 1/4 EXCEPT 4.00 ACRES OFF THE EAST END. THE ACREAGE BETWEEN THE QUARTER SECTION LINES AND THE EXISTING FENCE LINE CALCULATES TO BE APPROXIMATELY 3.8 ACRES. THE INTENT OF BOTH THE JUNIOR AND SENIOR DEEDS ARE CLEAR IN THAT THEY CALL FOR 4.0 ACRES. CONSEQUENTLY, THE EAST LINE OF THIS SURVEY WAS ESTABLISHED WEST OF THE LINE OF OCCUPANCY.
- THE CENTER LINE OF KOOP ROAD (T.R. 112) AS ESTABLISHED BY AUGLAIZE COUNTY PRIOR TO THIS SURVEY, IS NOT LOCATED ON THE QUARTER-QUARTER SECTION LINES. THE COUNTY CENTERLINE LIES SOUTH OF THE QUARTER-QUARTER SECTION LINES. CONSEQUENTLY, THE AREA CALCULATED TO BE RIGHT-OF-WAY ALONG KOOP ROAD IS THAT AREA BETWEEN THE NORTH RIGHT-OF-WAY LINE BASED ON THE COUNTY CENTERLINE AND THE QUARTER-QUARTER SECTION LINES AS ESTABLISHED BY THIS SURVEY. INFORMATION ON THE LOCATION OF THE QUARTER-QUARTER LINES IN RELATION TO THE EXISTING CENTERLINE OF KOOP ROAD HAS BEEN SUPPLIED TO THE AUGLAIZE COUNTY ENGINEER FOR FUTURE REFERENCE.



TOTAL PARCELS "A" + "B" = 45.6718 AC.
(TOTAL ROAD RIGHT-OF-WAY = 1.5705 AC.)

MINSTER MACHINE CO.
VOL. 245, PG. 427

NOTE: THE EAST LINE OF SECTION 15 WAS ASSUMED TO BEAR N.01°00'E. ALL OTHER BEARINGS WERE CALCULATED FROM ANGLES TURNED.

TOLERANCES (EXCEPT AS NOTED)	REVISIONS			DRAWN BY	SCALE	MATERIAL
	NO.	DATE	BY			
DECIMAL	1					
±	2					
FRACTIONAL	3					
±	4			CHK'D	DATE	DRAWING NO.
ANGULAR	5			TRACED	APP'D	H-602
±				NOTES (11-27-86)		