

U. LINE - SEC. 17
11.89°59'14"W
1445.41'

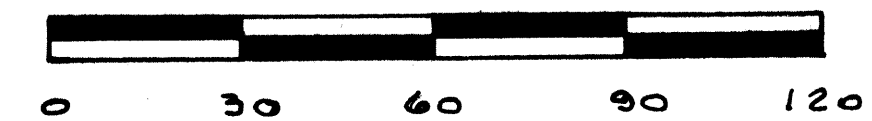
SEC. 8 SEC. 9
"A" "A"
SEC. 17 SEC. 10

WILSON SURVEY

PART OF THE N.E. 1/4 OF SECTION 17, TOWN 6
SOUTH, RANGE 4 EAST (ST. MARYS TWP.),
AUGLAIZE COUNTY, OHIO

AUGUST 24, 1995

SCALE 1" = 30'



LEGEND

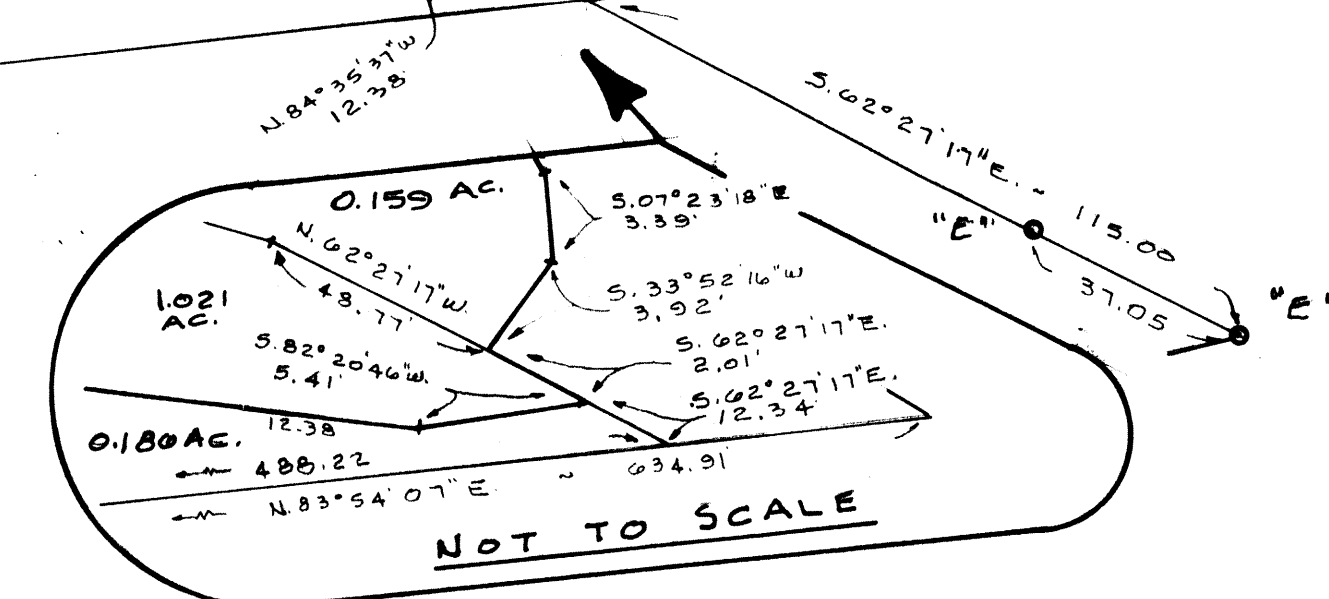
- "A" = 8" STEEL POST FILLED WITH CONCRETE AT N.E. CORNER - SEC. 17
- "B" = MINE SPIKE FOUND.
- "C" = RAILROAD SPIKE FOUND.
- "D" = P.K. NAIL FOUND.
- "E" = 5/8 INCH IRON BAR FOUND
- "F" = P.K. NAIL SET.
- "G" = 5/8 INCH IRON BAR SET.

STATE ROUTE 304
S. 19°45'31"W. ~ 284.48'

1.021
ACRES

LINE APPROXIMATELY 2 FEET INLAND FROM
EDGE OF WATER
0.159
ACRE

EDGE OF WATER
0.186 ACRE
(8112 SQ. FT.)



SURVEYED BY David R. Dees
GORDON L. GEESLIN
REGISTERED SURVEYOR
NO 5372



GORDON L. GEESLIN

REGISTERED LAND SURVEYOR

PHONE 419-586-6155

August 24, 1995

WILSON SURVEY DESCRIPTION (0.186 ACRE)

Being a parcel of land situated in St. Marys Township, Auglaize County, Ohio, in the northeast quarter of Section 17, Township 6 South, Range 4 East. Being more particularly described as follows:

Commencing for reference at an 8" steel post filled with concrete at the northeast corner of said Section 17-

Thence, north 89°59'14" west, along the north line of said Section 17, a distance of one thousand four hundred forty-five and 41/100 (1445.41) feet to a mine spike in the centerline of State Route 364-

Thence, south 16°58'43" west, along said centerline of State Route 364, a distance of two hundred twenty-seven and 21/100 (227.21) feet to a railroad spike-

Thence, continuing, along the centerline of said State Route 364, south 15°34'08" west, a distance of six hundred forty-two and 53/100 (642.53) feet to a railroad spike-

Thence, continuing, along said centerline of said State Route 364, south 19°45'31" west, a distance of one hundred forty-six and 22/100 (146.22) feet to a "P.K." nail-

Thence, south 72°03'09" east, a distance of forty-five and 95/100 (45.95) feet to a point-

Thence, south 17°00'30" west, a distance of two hundred fifty-eight and 74/100 (258.74) feet to a 5/8 inch iron bar-

Thence, north 83°54'07" east, a distance of thirty-one (31.00) feet to a point on the approximate water's edge of a channel. Said point being the place of beginning for the herein described parcel-

Thence, northeasterly, along the approximate waters edge of said channel, the following courses and distances:

north 44°35'00" east, 3.00 feet to a point-

north 60°30'00" east, 14.50 feet to a point-

north 72°00'00" east, 16.50 feet to a point-

Wilson Survey Description (0.186 acre)
page 2

north 82°00'00" east, 99.50 feet to a point-

north 81°15'00" east, 52.50 feet to a point-

north 79°50'00" east, 31.50 feet to a point-

north 75°16'43" east, 48.40 feet to a point-

north 86°20'00" east, 71.50 feet to a point-

north 88°30'00" east, 95.00 feet to a point-

south 84°25'00" east, 32.00 feet to a point-

south 84°35'37" east, 12.38 feet to a point-

north 82°20'46" east, 5.41 feet to a point-

Thence, leaving said water's edge, south 62°27'17" east, a distance of twelve and 34/100 (12.34) feet to a point in said channel-

Thence, south 83°54'07" west, a distance of four hundred eighty-eight and 21/100 (488.21) feet to the place of beginning.

Containing 8112 square feet more or less.

Subject to all easements and right-of-way of record.

Reference is made to surveys of this area, dated August 5, 1991, and August 24, 1995, on file in the County Engineer's Office.

Description prepared by Gordon L. Geeslin
Gordon L. Geeslin
Professional Surveyor 5372



GORDON L. GEESLIN

REGISTERED LAND SURVEYOR

PHONE 419-586-6188

AUGLAIZE
COUNTY

August 24, 1995

WILSON SURVEY DESCRIPTION (0.159 ACRE)

Being a parcel of land situated in St. Marys Township, Auglaize County, Ohio, in the northeast quarter of Section 17, Township 6 South, Range 4 East. Being more particularly described as follows:

Commencing for reference at an 8" steel post filled with concrete at the northeast corner of said Section 17-

Thence, north 89°59'14" west, along the north line of said Section 17, a distance of one thousand four hundred forty-five and 41/100 (1445.41) feet to a mine spike in the centerline of State Route 364-

Thence, south 16°58'43" west, along said centerline of State Route 364, a distance of two hundred twenty-seven and 21/100 (227.21) feet to a railroad spike-

Thence, continuing, along the centerline of said State Route 364, south 15°34'08" west, a distance of six hundred forty-two and 53/100 (642.53) feet to a railroad spike-

Thence, continuing, along said centerline of said State Route 364, south 19°45'31" west, a distance of one hundred forty-six and 22/100 (146.22) feet to a "P.K." nail-

Thence, south 72°03'09" east, a distance of forty-five and 95/100 (45.95) feet to a point-

Thence, south 17°00'30" west, a distance of fourteen and 59/100 (14.59) feet to a 5/8 inch iron bar. Said point being the place of beginning for the herein described parcel-

Thence, south 72°33'06" east, 75.89 feet to a point-

Thence, south 18°16'17" west, 6.79 feet to a point-

Thence, southeasterly, along a line approximately two (2.00) feet inland (south of) the edge of water of the canal feeder, the following courses and distances:

south 56°19'13" east, 20.34 feet to a point-

south 20°36'39" east, 18.86 feet to a point-

Wilson Survey description (0.159 acres)
page 2

north 61°34'42" east, 11.63 feet to a point-
south 39°45'00" east, 41.53 feet to a point-
south 86°37'38" east, 130.24 feet to a point-
south 76°42'14" east, 49.38 feet to a point-
south 63°09'38" east, 40.36 feet to a point-
south 73°51'33" east, 67.17 feet to a point-
south 52°33'58" east, 23.15 feet to a point-
south 30°44'48" east, 12.29 feet to a point-
south 07°23'18" east, 3.39 feet to a point-
south 33°52'16" west, 3.92 feet to a point-

Thence, northwesterly, along a line that approximately sixteen (16.00) feet inland (south of) the edge of water of said canal feeder, the following courses and distances:

north 62°27'17" west, 48.77 feet to a point-
north 73°51'33" west, 51.37 feet to a point-
north 63°09'38" west, 40.01 feet to a point-
north 76°42'14" west, 46.51 feet to a point-
north 86°37'38" west, 135.09 feet to a point-
north 39°45'00" west, 36.12 feet to a point-
south 61°34'42" west, 16.21 feet to a point-
north 20°36'39" west, 30.40 feet to a point-
north 56°19'13" west, 26.49 feet to a point-
north 18°16'17" east, 3.25 feet to a point-

Wilson Survey Description (0.159 acre)
page 3

Thence, north $72^{\circ}33'06''$ west, a distance of sixty-one and 58/100 (61.58) feet to a point-

Thence, north $17^{\circ}00'30''$ east, a distance of fourteen (14.00) feet to a point-

Containing 0.159 acre of land more or less.

Subject to all easements and right-of-way of record.

Reference is made to surveys of this area, dated August 5, 1991, and August 24, 1995, on file in the County Engineer's Office.

Description prepared by *Gordon L. Geeslin*
Gordon L. Geeslin
Professional Surveyor 5372

