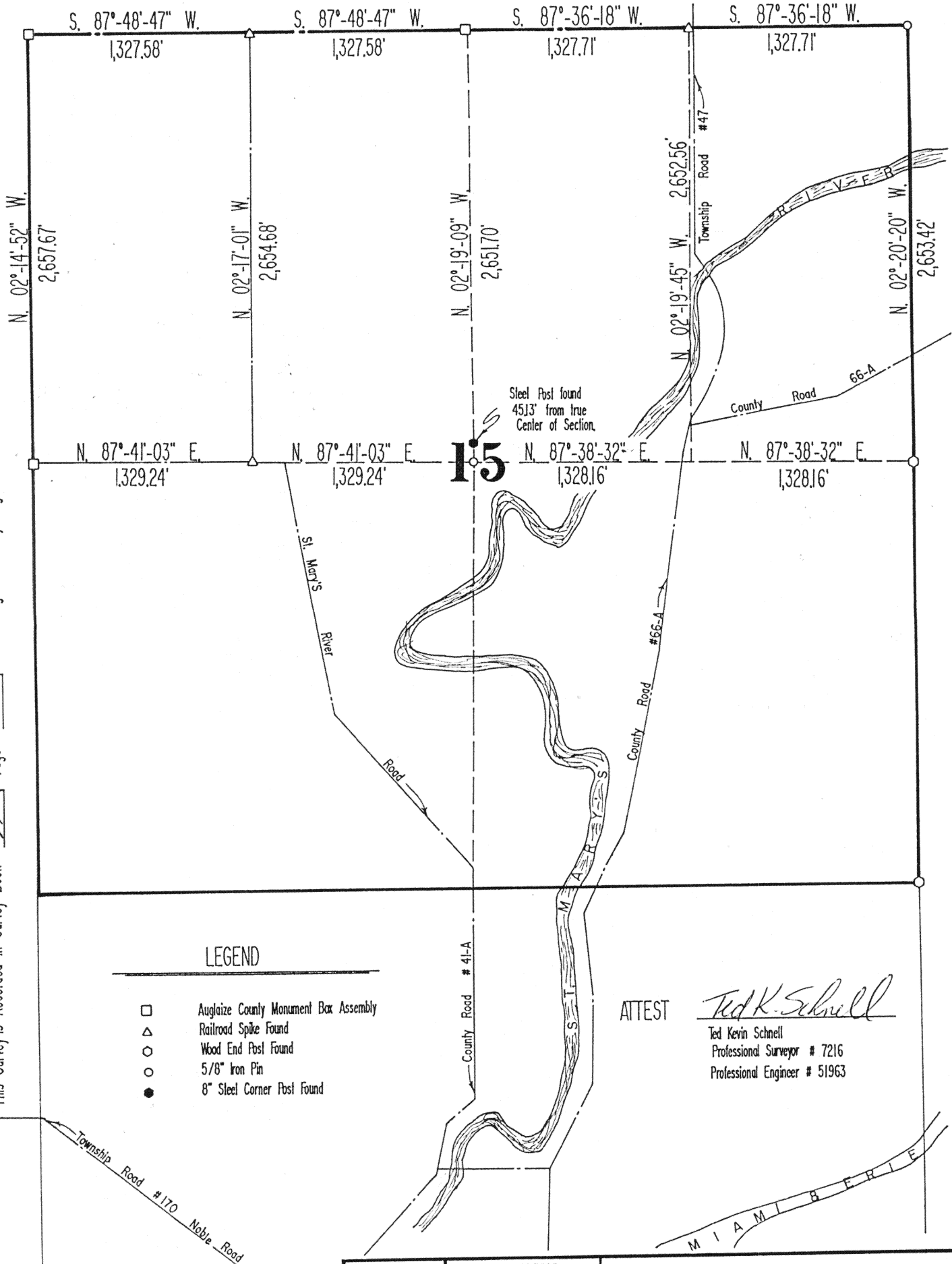


Survey of Section 15, Noble Twp.

This Survey is Recorded in Survey Book "H" Page "383" in the Auglaize County Engineer's Office.



LEGEND

- Auglaize County Monument Box Assembly
- △ Railroad Spike Found
- Wood End Post Found
- 5/8" Iron Pin
- 8" Steel Corner Post Found

ATTEST

Ted K. Schnell
Ted Kevin Schnell
Professional Surveyor # 7216
Professional Engineer # 51963

TOLERANCES (EXCEPT AS NOTED)		REVISIONS			Survey of Section 15, Noble Township		
DECIMAL	±	NO.	DATE	BY	Auglaize County Engineer's Office		
		1			DRAWN BY	SCALE	MATERIAL
		2			Kevin Schnell P.E., P.S.	None	
FRACTIONAL	±	3			CHK'D	DATE	DRAWING NO.
		4				Feb. 1989	
ANGULAR	±	5			TRACED	APP'D	