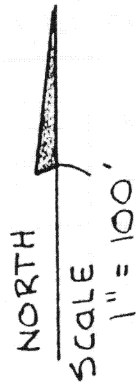


See Reference Survey  
Book G Page 515



fd T-110

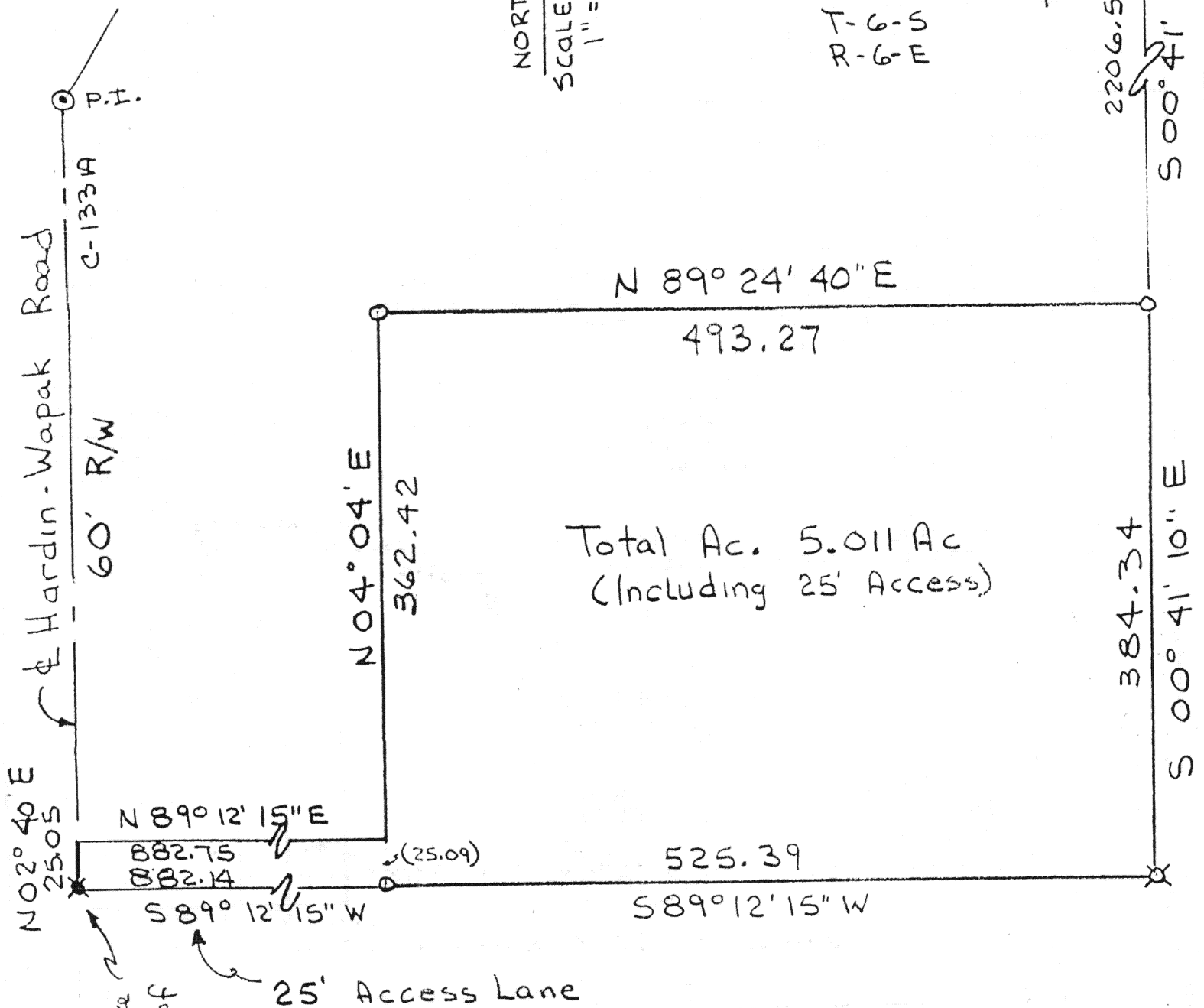
N/E Cor.

Sec 19

Pusheta Twp

T-6-S

R-6-E



Note: R.R. Spike  
0.76' North of  
Corner

25' Access Lane

Legend

- = Mon. Box
- ⊙ = Conc. Mon.
- = I.P. SET
- ⊗ = I.P. Fd.
- ✱ = R.R. Spk. Fd.

Thomas W Steinke



Prepared By

T. W. Steinke  
Surveyor # 6177  
22, 1988

Headapohl ~ Brown Survey  
Auglaize Co.  
Pusheta Twp  
T-6-S R-6-E  
Sec. 19  
H-704

Description of 5.011 Acres

Being 5.011 acres located in Section 19, T-6-S, R-6-E, Pusheta Township, Auglaize County, Ohio and being further described as follows:

Commencing at a monument box located at the north-east corner of Section 19;

Thence, south 00 degrees 41 minutes 10 seconds east, along the east line of Section 19, a distance of 2206.51 feet to an iron pin and the PLACE OF BEGINNING for the parcel herein described.

Thence, continuing south 00 degrees 41 minutes 10 seconds east, a distance of 384.34 feet to an iron pin;

Thence, south 89 degrees 12 minutes 15 seconds west, a distance of 1407.53 feet to the center line of Hardin-Wapak Road (c-133a), passing through an iron pin <sup>at</sup> to 525.39 feet;

Thence, north 02 degrees 40 minutes east, along the center line of Hardin-Wapak Road (c-133a), a distance of 25.05 feet to a point, passing through a railroad spike at 0.70 feet;

Thence, north 89 degrees 12 minutes 15 seconds east, a distance of 882.75 feet to a point;

Thence, north 04 degrees 04 minutes east, a distance of 362.42 feet to an iron pin;

Thence, north 89 degrees 24 minutes 40 seconds east, a distance of 493.27 feet to an iron pin and the east line of Section 19 and the PLACE OF BEGINNING.

Containing in all 5.011 acres and being subject to all legal easements and rights-of-way of record.

Survey and description prepared by Thomas W. Steinke, Registered Surveyor #6177, this 22nd day of March, 1988.

*Thomas W Steinke*

H-705