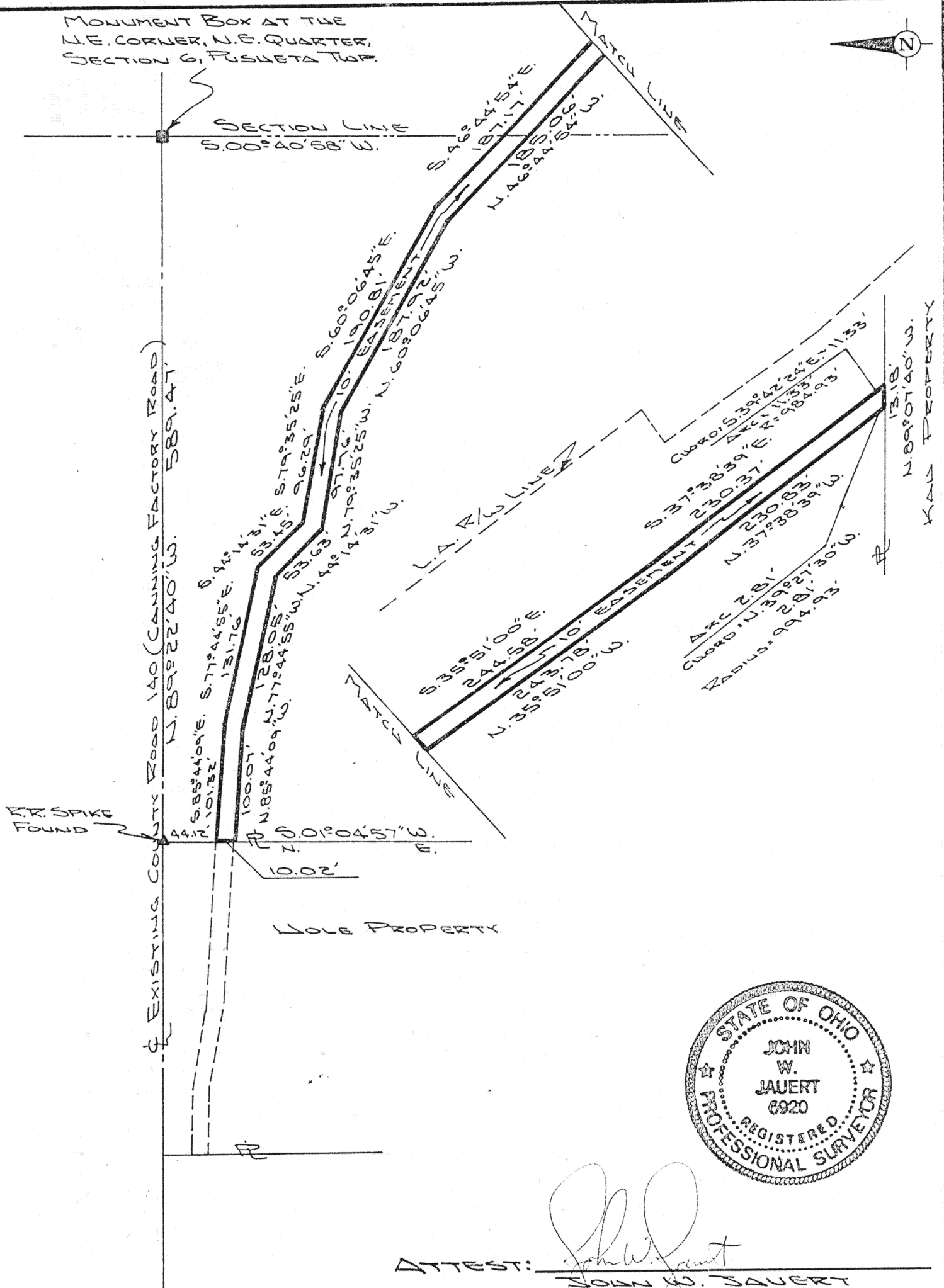


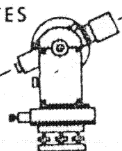
MONUMENT BOX AT THE
N.E. CORNER, N.E. QUARTER,
SECTION 6, RUSSETA TWP.



ATTEST: *John W. Jauert*
JOHN W. SAUERT
PROFESSIONAL
SURVEYOR NO. 6920

KATTERLENNY

Jauert
ASSOCIATES



Surveying
AND LAND CONSULTING

RT.3 BOX 449 WAPAKONETA, OHIO 45895
PH. (419) 738-8962

I-69

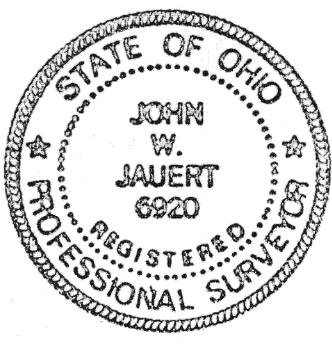
Client TELEPHONE SERVICE CO.
County AUGLAIZE Township RUSSETA
Section 6 T. 6 S., R. 6 E. Drwg. No. 90-520
Drawn By J. SAUERT Date FEB. 1990
Scale _____ Sheet 1 of 2



Being an easement for the Telephone Service Company located in the Northwest Quarter of Section 5 and the Northeast Quarter of Section 6, Town 6 South, Range 6 East, Pusheta Township, Auglaize County, Ohio and is more particularly described as follows:

Commencing at a monument box at the Northeast corner of said Northeast Quarter of said Section 6, Pusheta Township;
thence N. 89° 22' 40" W. along the North line of the Northeast Quarter of said Section 6 and the existing centerline of County Road 140 (Canning Factory Road), a distance of 589.47 feet to a R.R. spike found;
thence S. 01° 04' 57" W. along the grantor's Westerly line, a distance of 44.12 feet to a point, which is the PLACE OF BEGINNING:
thence S. 85° 44' 09" E. a distance of 101.32 feet to a point;
thence S. 77° 44' 55" E. a distance of 131.76 feet to a point;
thence S. 44° 14' 31" E. a distance of 53.45 feet to a point;
thence S. 79° 35' 25" E. a distance of 96.29 feet to a point;
thence S. 60° 06' 45" E. a distance of 190.81 feet to a point;
thence S. 46° 44' 54" E. and entering the Northwest Quarter of Section 5, Pusheta Township, a distance of 187.17 feet to a point;
thence S. 35° 51' 00" E. a distance of 244.58 feet to a point;
thence S. 37° 38' 39" E. a distance of 230.37 feet to a point;
thence Southeasterly along a curve to the left, with a radius of 994.93 feet, a distance of 11.33 feet to a point on the grantor's Southerly line, the chord to said curve bears S. 39° 42' 24" E., a distance of 11.33 feet;
thence N. 89° 07' 40" W. along the grantor's Southerly line, a distance of 13.18 feet to a point;
thence Northwesterly along a curve to the right, with a radius of 994.93 feet, a distance of 2.81 feet to a point, the chord to said curve bears N. 39° 27' 30" W. a distance of 2.81 feet;
thence N. 37° 38' 39" W. a distance of 230.83 feet to a point;
thence N. 35° 51' 00" W. a distance of 243.78 feet to a point;
thence N. 46° 44' 54" W. and entering the Northeast Quarter of Section 6, Pusheta Township, a distance of 185.06 feet to a point.
thence N. 60° 06' 45" W. a distance of 187.92 feet to a point;
thence N. 79° 35' 25" W. a distance of 97.76 feet to a point;
thence N. 44° 14' 31" W. a distance of 53.63 feet to a point;
thence N. 77° 44' 55" W. a distance of 128.05 feet to a point;
thence N. 85° 44' 09" W. a distance of 100.07 feet to a point on the grantor's Westerly line;
thence N. 01° 04' 57" E. along the grantor's Westerly line, a distance of 10.02 feet to a point, which was the true PLACE OF BEGINNING.

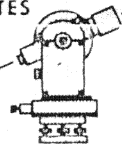
Containing in all 0.28 acre of land of which 0.13 acre is located in the Northwest Quarter of Section 5, Pusheta Township and 0.15 acre in the Northeast Quarter of Section 6, Pusheta Township. Previous deed reference: Volume 257, page 356. This plat and description is recorded in Survey Book "I", page 69, in the Auglaize County Engineer's Office.



ATTEST; John W. Jauert
John W. Jauert
Professional Surveyor No. 6920

KATTERQUENRY

Jauert
ASSOCIATES



Surveying
AND LAND CONSULTING

RT. 3 BOX 449 WAPAKONETA, OHIO 45895
PH. (419) 738-8962

I-70

Client	TELEPHONE SERVICE CO.		
County	AUGLAIZE	Township	PUSHETA
Section	6	T. 6 S., R. 6 E.	Drwg. No. 90-520
Drawn By	Date FEB. 1990		
Scale	Sheet 2 of 2		

5: