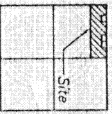


# LOCATION PLAN

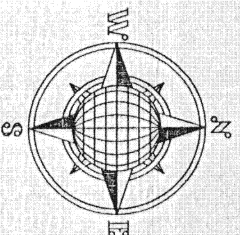
Section 19,



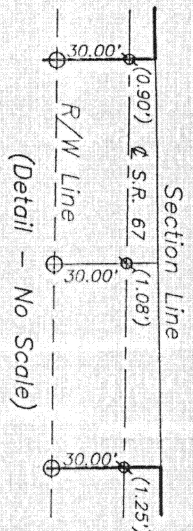
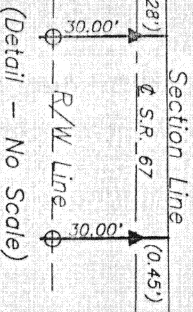
Union Township,  
Auglaize County,  
Ohio.

# RONDELL FISHER SURVEY

Pt. Northwest Quarter of Section 19,  
Town 5 South, Range 7 East, Union  
Township, Auglaize County, Ohio.



Northwest Corner,  
Northwest Quarter,  
Section 19.  
Sta. 218+51.1



N.00°51'26"E.

563.25'

25' R/W Line

S.00°12'11"E.

322.95'

270.00'

N.89°47'48"E.

323.12'

N.00°12'11"W.

270.00'

N.89°45'36"E.

439.80'

N.89°45'36"E.

700.98'

N.89°45'36"E.

406.45'

N.89°45'36"E.

571.67'

S.00°38'01"W.

1/2 Section Line

571.67'

S.00°12'11"E.

323.57'

270.00'

N.89°47'48"E.

323.75'

N.00°12'11"W.

270.00'

N.89°45'36"E.

406.45'

N.89°45'36"E.

571.67'

S.00°38'01"W.

1/2 Section Line

571.67'

S.00°12'11"E.

323.92'

270.00'

N.89°47'48"E.

323.92'

N.00°12'11"W.

270.00'

N.89°45'36"E.

406.45'

N.89°45'36"E.

571.67'

S.00°38'01"W.

1/2 Section Line

571.67'

S.00°12'11"E.

323.92'

270.00'

N.89°47'48"E.

323.92'

N.00°12'11"W.

270.00'

N.89°45'36"E.

406.45'

N.89°45'36"E.

571.67'

S.00°38'01"W.

1/2 Section Line

571.67'

S.00°12'11"E.

323.92'

270.00'

N.89°47'48"E.

323.92'

N.00°12'11"W.

270.00'

N.89°45'36"E.

406.45'

N.89°45'36"E.

571.67'

S.00°38'01"W.

1/2 Section Line

571.67'

S.00°12'11"E.

323.92'

270.00'

N.89°47'48"E.

323.92'

N.00°12'11"W.

270.00'

N.89°45'36"E.

406.45'

N.89°45'36"E.

571.67'

S.00°38'01"W.

1/2 Section Line

571.67'

S.00°12'11"E.

323.92'

270.00'

N.89°47'48"E.

323.92'

N.00°12'11"W.

270.00'

N.89°45'36"E.

406.45'

N.89°45'36"E.

571.67'

S.00°38'01"W.

1/2 Section Line

571.67'

S.00°12'11"E.

323.92'

270.00'

N.89°47'48"E.

323.92'

N.00°12'11"W.

270.00'

N.89°45'36"E.

406.45'

N.89°45'36"E.

571.67'

S.00°38'01"W.

1/2 Section Line

571.67'

S.00°12'11"E.

323.92'

270.00'

N.89°47'48"E.

323.92'

N.00°12'11"W.

270.00'

N.89°45'36"E.

406.45'

N.89°45'36"E.

571.67'

S.00°38'01"W.

1/2 Section Line

571.67'

S.00°12'11"E.

323.92'

270.00'

N.89°47'48"E.

323.92'

N.00°12'11"W.

270.00'

N.89°45'36"E.

406.45'

N.89°45'36"E.

571.67'

S.00°38'01"W.

1/2 Section Line

571.67'

S.00°12'11"E.

323.92'

270.00'

N.89°47'48"E.

323.92'

N.00°12'11"W.

270.00'

N.89°45'36"E.

406.45'

N.89°45'36"E.

571.67'

S.00°38'01"W.

1/2 Section Line

571.67'

S.00°12'11"E.

323.92'

270.00'

N.89°47'48"E.

323.92'

N.00°12'11"W.

270.00'

N.89°45'36"E.

406.45'

N.89°45'36"E.

571.67'

S.00°38'01"W.

1/2 Section Line

571.67'

S.00°12'11"E.

323.92'

270.00'

N.89°47'48"E.

323.92'

N.00°12'11"W.

270.00'

N.89°45'36"E.

406.45'

N.89°45'36"E.

571.67'

S.00°38'01"W.

1/2 Section Line

571.67'

S.00°12'11"E.

323.92'

270.00'

N.89°47'48"E.

323.92'

N.00°12'11"W.

270.00'

N.89°45'36"E.

406.45'

N.89°45'36"E.

571.67'

S.00°38'01"W.

1/2 Section Line

571.67'

S.00°12'11"E.

323.92'

270.00'

N.89°47'48"E.

323.92'

N.00°12'11"W.

270.00'

N.89°45'36"E.

406.45'

N.89°45'36"E.

571.67'

S.00°38'01"W.

1/2 Section Line

571.67'

S.00°12'11"E.

323.92'

270.00'

N.89°47'48"E.

323.92'

N.00°12'11"W.

270.00'

N.89°45'36"E.

406.45'

N.89°45'36"E.

571.67'

S.00°38'01"W.

1/2 Section Line

571.67'

S.00°12'11"E.

323.92'

270.00'

N.89°47'48"E.

323.92'

N.00°12'11"W.

270.00'

N.89°45'36"E.

406.45'

N.89°45'36"E.

571.67'

S.00°38'01"W.

1/2 Section Line

571.67'

S.00°12'11"E.

323.92'

270.00'

N.89°47'48"E.

323.92'

N.00°12'11"W.

270.00'

N.89°45'36"E.

406.45'

N.89°45'36"E.

## DESCRIPTION FOR 24.702 ACRE TRACT

The following described tract of land is part of the Northwest Fractional Quarter of Section 19, Town 5 South, Range 7 East, Union Township, Auglaize County, Ohio and is more particularly described as follows:

The PLACE OF BEGINNING is at a R.R. Spike found at the Northwest corner of the Northwest Quarter of Section 19, Union Township and in the intersection of the centerlines of County Road 191 (Townline-Lima Road) and State Route 67;

thence N.89°45'36"E. along the North line of the Northwest Quarter of Section 19, a distance of 439.80 feet to a point;

thence S.00°12'11"E. along the West line of a 2.002 Acre tract of land as recorded in Deed Volume O.R. 189, page 898, a distance of 322.95 feet to an iron pin found, passing thru a R.R. spike found at 0.28 feet and passing thru an iron pin found for reference at 30.28 feet in the South Right-of-Way line of State Route 67;

thence N.89°47'48"E. along the South line of the above described 2.002 Acre tract of land, a distance of 270.00 feet to an iron pin found;

thence N.00°12'11"W. along the East line of the above described 2.002 Acre tract of land, a distance of 321.12 feet to a point, passing thru an iron pin found for reference at 292.67 feet in the South Right-of-Way line of State Route 67 and passing thru a R.R. Spike found at 320.67 feet in the centerline of State Route 67;

thence N.89°45'36"E. along the North line of the Northwest Quarter of Section 19, a distance of 700.98 feet to a point;

thence S.00°12'11"E. along the West line of a 2.006 Acre tract of land as described in Deed Volume OR 283, page 302, a distance of 323.57 feet to an iron pin set, passing thru a P.K. nail set at 0.90 feet in the centerline of State Route 67 and passing thru an iron pin set for reference at 30.90 feet in the South Right-of-Way line of State Route 67;

thence N.89°47'48"E. along the South line of the above described 2.006 Acre tract of land, a distance of 270.00 feet to an iron pin set;

thence continuing N.89°47'48"E. along the South line of a 2.007 Acre tract of land as described in Deed Vol. OR 288, page 799, a distance of 270.00 feet to an iron pin set;

thence N.00°12'11"W. along the East line of the above described 2.007 Acre tract of land, a distance of 323.92 feet to a point, passing thru an iron pin set for reference at 292.67 feet in the South Right-of-Way line of State Route 67 and passing thru a P.K. Nail set at 322.67 feet in the centerline of State Route 67;

thence N.89°45'36"E. along the North line of the Northwest Quarter of Section 19, a distance of 406.45 feet to a point being referenced by a 6 inch steel post found 0.11 feet South and 1.9 feet West of said point;

thence S.00°38'01"W. along the East line of the Northwest Quarter of Section 19, a distance of 571.67 feet to an iron pin set;

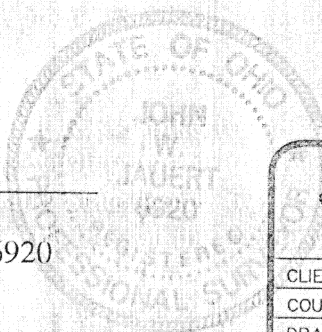
thence S.89°57'56"W. along an existing crop line, a distance of 2,359.31 feet to a P.K. Nail set, passing thru an iron pin set for reference at 2,334.31 feet in the East Right-of-Way line of County Road 191;

thence N.00°51'26"E. along the centerline of County Road 191 and the West line of the Northwest Quarter of Section 19, a distance of 563.25 feet to the R.R. Spike which was the true PLACE OF BEGINNING.

Containing in all 24.702 Acre of which 1.104 Acre has been dedicated for highway purposes. The above described tract of land is subject to all legal easements, restrictions, and reservations, if any, of record or in use on said premises. Previous deed reference: Volume O.R. 36, page 337. This plat is recorded in Survey Book "K", page 529, in the Auglaize County Engineer's Office. Basis of bearings is per Auglaize County Global Positioning Survey.

ATTEST:

John W. Jauert  
Professional Surveyor No. 6920



**Jauert**  
surveying

11584 Monroe Road  
Wapakoneta, Ohio  
45895  
(419) 657-6999

CLIENT: Rondell Fisher		
COUNTY: Auglaize	TOWNSHIP: Union	SEC. 19
DRAWN BY: J.W.J.	SCALE: 1"=200'	DWG. 97-1212B
CHECKED BY:	DATE: March, 1997	
SHEET 2 OF 2	(T-5-S; R-7-E)	