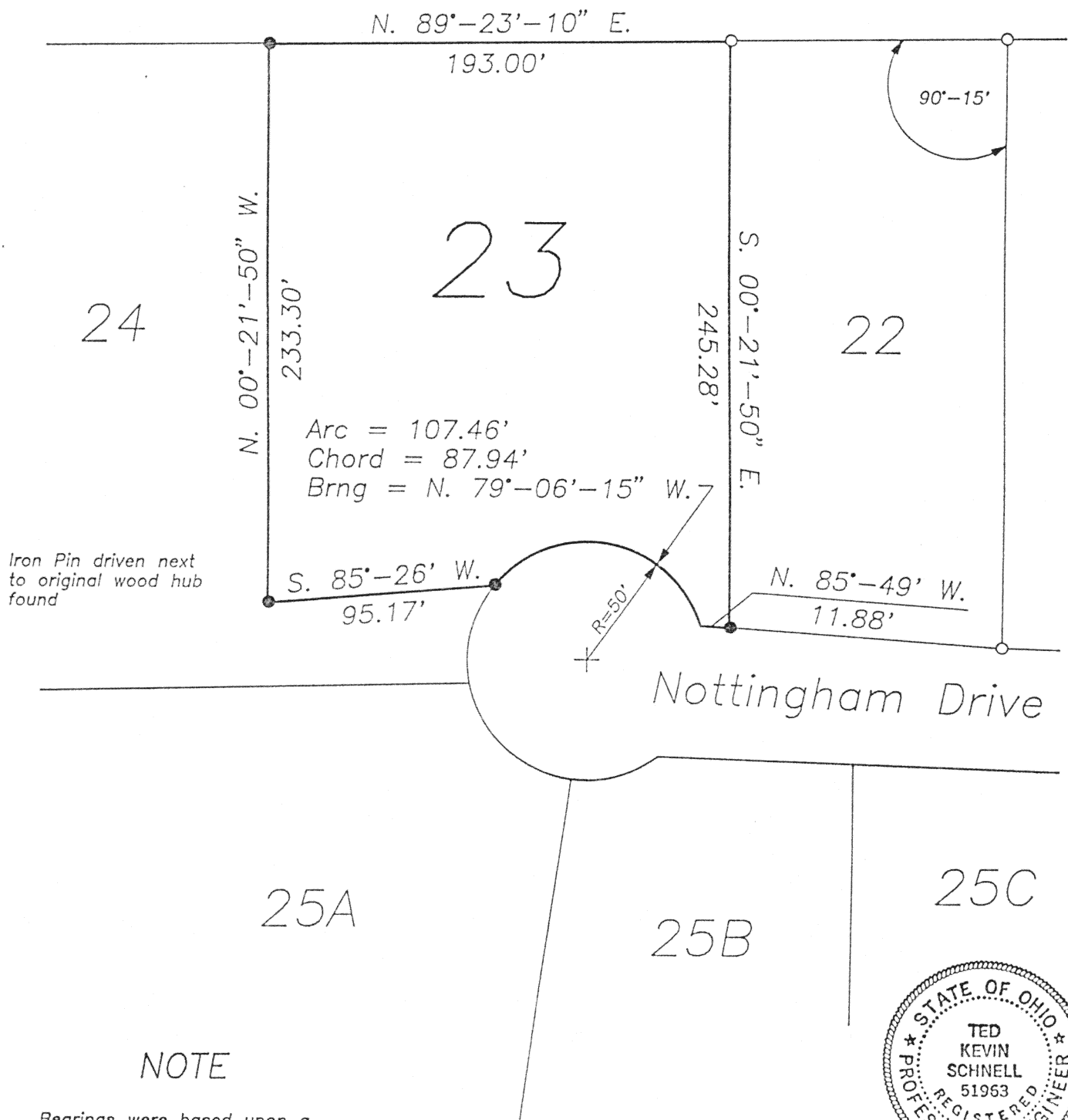
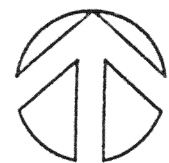


Survey of Lot 23  
 Sherwood Forest Subdivision  
 Situated in Section 19, Duchouquet Township  
 Town-5-South, Range-6-East, Auglaize County, Ohio



**NOTE**

Bearings were based upon a previous survey by the Auglaize County Engineer's Office in 1975 prior to the re-plat of Lot 25.

**LEGEND**

- Iron Pin (set)
- Iron Pin (found)
- Wood Hub (found)

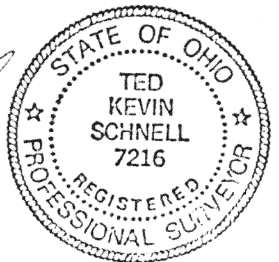
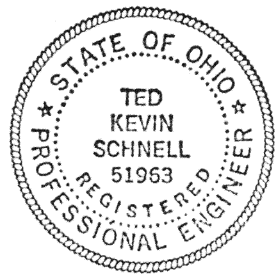
**SCALE**



ATTEST

*Ted K. Schnell*

Ted K. Schnell  
 Professional Engineer  
 Professional Surveyor



REVISIONS			Ted K. Schnell Professional Engineer Professional Surveyor		
NO.	DATE	BY	Survey of Lot 23		
1			Sherwood Forest Subdivision		
2			DRAWN BY	SCALE	DRAWING NO.
3			CHK'D	DATE	1 OF 1
4			TRACED	APP'D	
5					

N-437