

Survey of a parcel of land located in the E 1/2 of the SW 1/4 of Section 20, T4S, R5E, Logan Township, Augaize County, Ohio.

Prior deed referenced in Official Record 422, Page 208 ~ Parcel #F17-020-007-00

Note:  
All distances called out  
on this plat are measured  
distances, unless otherwise  
noted.

Nancy Seibert  
Official Record 100, Page 398

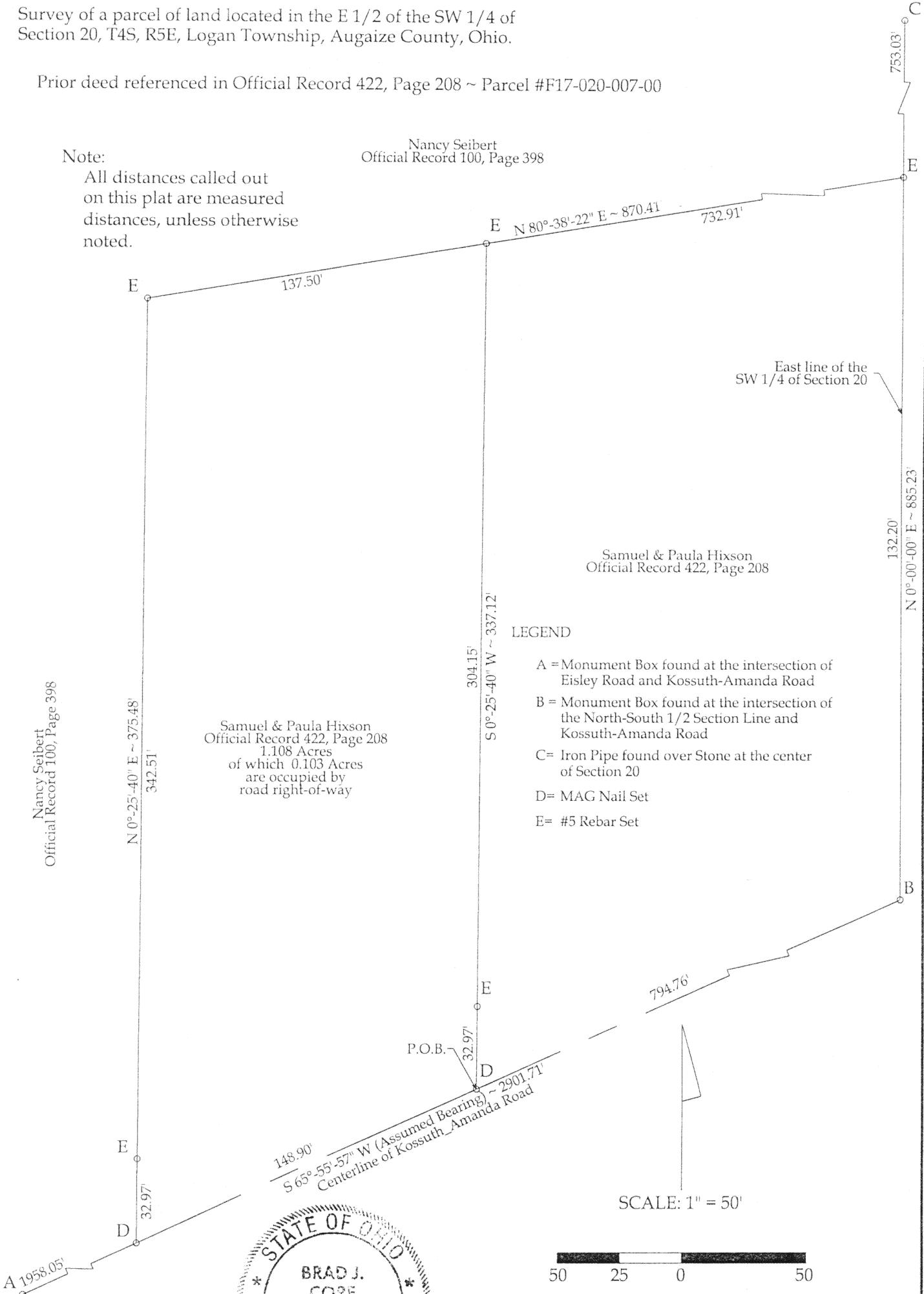
Nancy Seibert  
Official Record 100, Page 398

Samuel & Paula Hixson  
Official Record 422, Page 208  
1.108 Acres  
of which 0.103 Acres  
are occupied by  
road right-of-way

Samuel & Paula Hixson  
Official Record 422, Page 208

LEGEND

- A = Monument Box found at the intersection of Easley Road and Kossuth-Amanda Road
- B = Monument Box found at the intersection of the North-South 1/2 Section Line and Kossuth-Amanda Road
- C = Iron Pipe found over Stone at the center of Section 20
- D = MAG Nail Set
- E = #5 Rebar Set



This Plat represents an actual boundary  
survey completed under my direct  
supervision on February 19, 2003.

*Brad J. Core*  
Brad J. Core, P.S. #8004

CORE CONSULTING  
A DIVISION OF MATERIALS TESTING, INC.  
1660 S. DEFIANCE TRAIL  
SPENCERVILLE, OHIO 45887  
(419) 647-6163

CLIENT: ED HIXSON			
SURVEYED BY: J.L.S.	DATE: 2-19-2003	DRAWN BY: Z.J.G.	CHECKED BY: B.J.C.
SCALE: 1" = 50'	PAGE 1	OF 2	PAGES

0-208

## DESCRIPTION

Being a survey of a part of parcel #F17-020-007-00 located in the E ½ of the SW ¼ of Section 20, T4S, R5E, Logan Township, Auglaize County, Ohio. Prior deed referenced in Official Record 422, Page 208. More particularly described as follows:

Commencing, for reference, at the monument box at the intersection of the North-South ½ section line and the centerline of Kossuth-Amanda Road; thence S 65°-55'-57" W (assumed bearing) on the centerline of Kossuth-Amanda Road, 794.76' to a MAG Nail set at the POINT OF BEGINNING; thence the following courses:

- 1) Continue, S 65°-55'-57" W, 148.90' to a set MAG Nail;
- 2) N 0°-25'-40" E, 375.48' to a set #5 rebar, passing a set #5 rebar at 32.97';
- 3) N 80°-38'-22" E, 137.50' to a set #5 rebar;
- 4) S 0°-25'-40" W, 337.12' to the POINT OF BEGINNING, passing a set #5 rebar at 304.15'.

The above described parcel of land contains 1.108 acres, more or less, of which 0.103 acres are occupied by road right-of-way. This parcel is subject to all legal highways and easements of record.

This legal description and the accompanying plat represent an actual boundary survey conducted under the direct supervision of Brad J. Core, P.S. #8004 on February 19, 2003. All markers called for above are in place.

0-209