

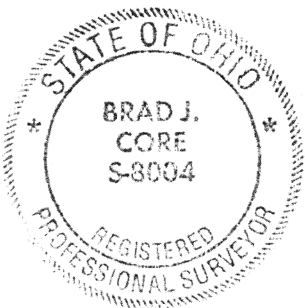
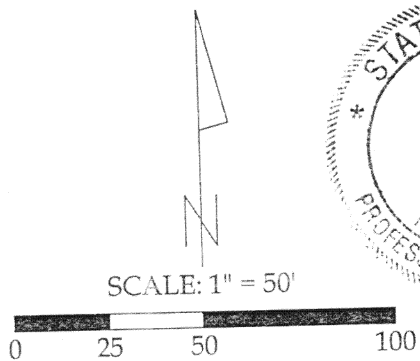
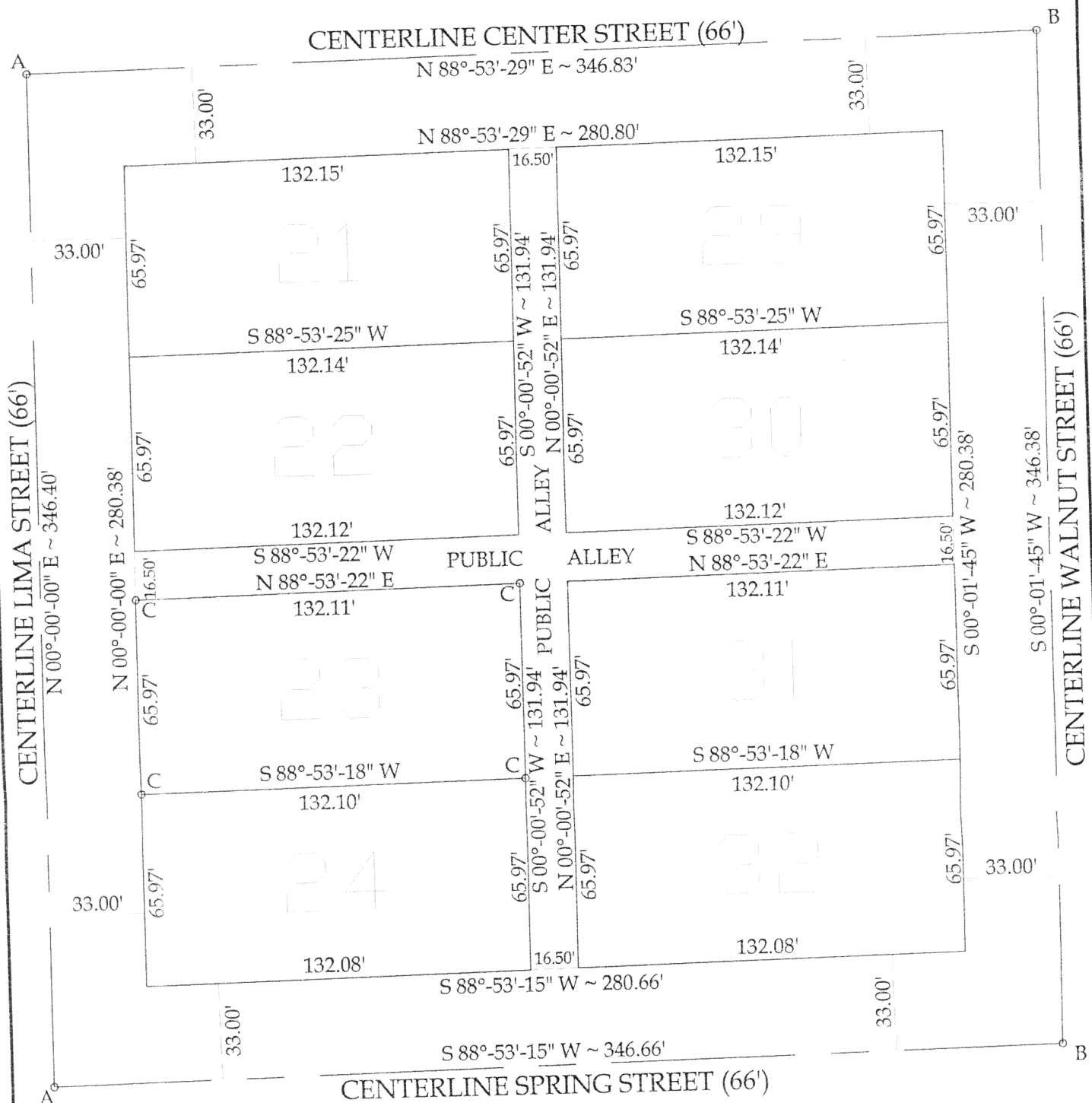
Survey of parcel # A03-051-015-00, said parcel of land also being known as Lot # 23 in the Original Plat of Village of St. Johns, Auglaize County, Ohio. Said parcel is located in the NW 1/4 of Section 5, T6S, R7E, Clay Township, Auglaize County, Ohio.

Prior Deed referenced in Official Record 476, Page 1131.

Notes:

All distances called out on this plat are measured distances, unless otherwise noted.

All lots are platted as 66.00' by 132.00'.



Legend

- A = Railroad Spike found in center of intersection
- B = PK Nail found in center of intersection
- C = #5 Rebar set

This Plat represents an actual boundary survey completed under my direct supervision on May 12, 2003.

*Brad J. Core*  
Brad J. Core, P.S. #8004

CORE CONSULTING A DIVISION OF MATERIALS TESTING, INC. 1660 S. DEFIANCE TRAIL SPENCERVILLE, OHIO 45887 (419) 647-6163			
CLIENT: DUSTIN HAVER			
SURVEYED BY: J.L.S.	DATE: 5-12-2003	DRAWN BY: Z.J.G.	CHECKED BY: B.J.C.
SCALE: 1" = 50'		PAGE: 1	OF 1 PAGES

0-287