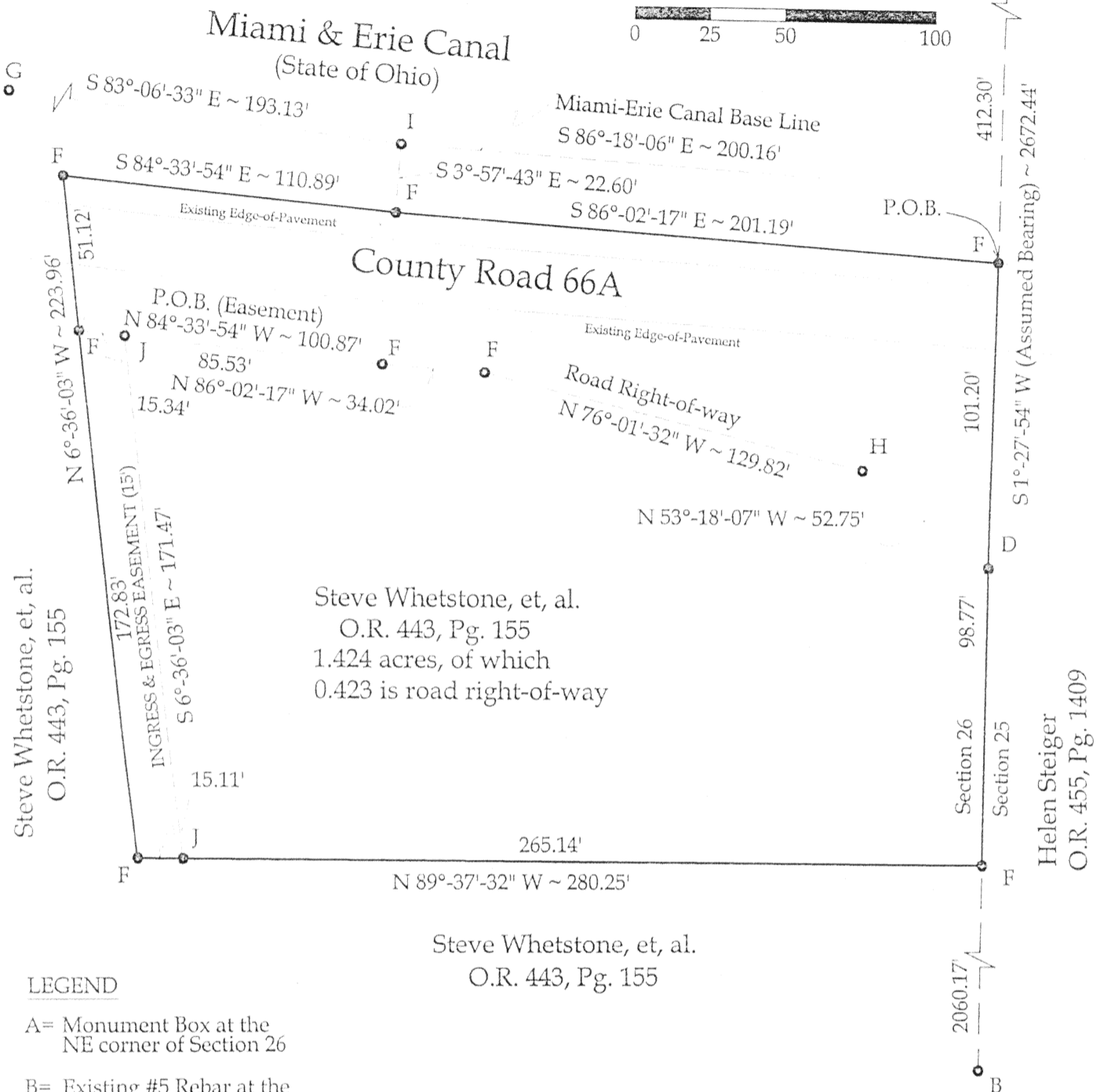


Prior deed referenced in Official Record 443, Page 155.

155.

SCALE: 1" = 50'



A= Monument Box at the
NE corner of Section 26

B= Existing #5 Rebar at the
SE corner of the NE 1/4
of Section 26

C= Existing PK Nail

D= Existing #5 Rebar

E= Set MAG Nail

F= Set #5 Rebar

G= Existing Monument found at Canal Sta. 5407+27.45

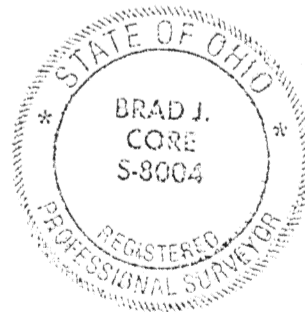
H= Existing ODOT Monument

I= Existing Monument found at Canal Sta 5409+20.60

J= Point not monumented

Notes:

All distances called out on this plat are measured distances, unless otherwise noted.



This Plat represents an actual boundary
survey completed under my direct
supervision on August 26, 2003.

A DIVISION OF MATERIALS TESTING, INC.

1660 S. DEFIANCE TRAIL
SPENCERVILLE, OHIO 45887
(419) 647-6163

CLIENT:

Steve Whetstone

SURVEYED BY:

I.L.S.

DATE:

8-26-2003

DRAWN BY:

P.J.M.

CHECKED BY:

B.J.C.

SCALE:

$$1'' = 50'$$


	PAGE
1	1
2	2
3	3
4	4
5	5
6	6
7	7
8	8
9	9
10	10
11	11
12	12
13	13
14	14
15	15
16	16
17	17
18	18
19	19
20	20
21	21
22	22
23	23
24	24
25	25
26	26
27	27
28	28
29	29
30	30
31	31
32	32
33	33
34	34
35	35
36	36
37	37
38	38
39	39
40	40
41	41
42	42
43	43
44	44
45	45
46	46
47	47
48	48
49	49
50	50
51	51
52	52
53	53
54	54
55	55
56	56
57	57
58	58
59	59
60	60
61	61
62	62
63	63
64	64
65	65
66	66
67	67
68	68
69	69
70	70
71	71
72	72
73	73
74	74
75	75
76	76
77	77
78	78
79	79
80	80
81	81
82	82
83	83
84	84
85	85
86	86
87	87
88	88
89	89
90	90
91	91
92	92
93	93
94	94
95	95
96	96
97	97
98	98
99	99
100	100

1

OF

3

PAGES


Brad J. Core, P.S. #8004

0-388

For revision see O-388-Rev

Steve Whetstone
Page 2 of 3
August 26, 2003

LEGAL DESCRIPTION

Being part of a parcel of land located in the NE $\frac{1}{4}$ of the NE $\frac{1}{4}$ of Section 26, T4S, R4E, Salem Township, Auglaize County, Ohio, and prior deed referenced in Official Record 443, Page 155. Said parcel being more particularly described as follows:

Commencing, for reference, at an existing monument box at the NE corner of Section 26; thence S 1° -27'-54" W (assumed bearing) on the East line of the NE $\frac{1}{4}$ of Section 26, 412.30' to a #5 rebar set at the POINT OF BEGINNING said point being on the South line of the Miami & Erie Canal; thence the following courses:

- 1) Continue S 1° -27'-54" W on said section line, 199.97' to a set #5 Rebar, passing an existing #5 rebar at 101.20';
- 2) N 89° -37'-32" W, 280.25' to a set #5 rebar;
- 3) N 6° -36'-03" W, 223.96' to a #5 rebar set on the South line of the Miami & Erie Canal, passing a #5 rebar set at 172.83';
- 4) S 84° -33'-54" E on the South line of the Miami & Erie Canal, 110.89' to a set #5 rebar;
- 5) S 86° -02'-17" E on the South line of the Miami & Erie Canal, 201.19' to the POINT OF BEGINNING.

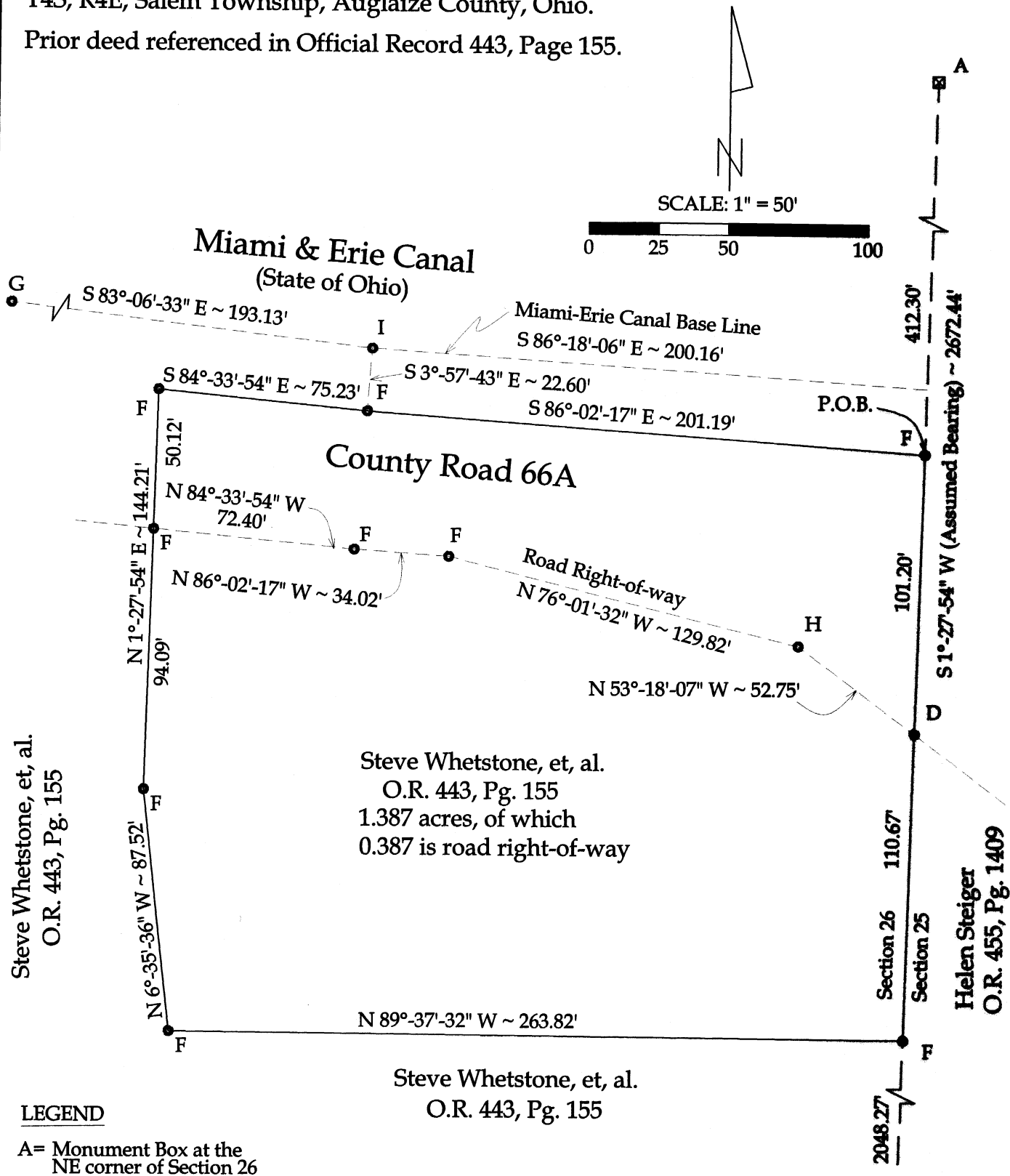
The above-described parcel of land contains 1.424 acres, more or less, of which 0.423 acres are occupied by road right-of-way. This parcel is subject to all legal highways and easements of record.

This legal description and the accompany plat represent an actual boundary survey conducted under the direct supervision of Brad J. Core, P.S. #8004 on August 26, 2003. All markers called for above are in place.

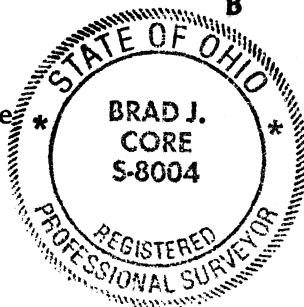
O-389

Survey of a part of the NE 1/4 of the NE 1/4 of Section 26,
T4S, R4E, Salem Township, Auglaize County, Ohio.

Prior deed referenced in Official Record 443, Page 155.



Notes:
All distances called out on this plat are measured distances, unless otherwise noted.



REVISED: 10-01-2003, P.J.M.

This Plat represents an actual boundary survey completed under my direct supervision on August 26, 2003.

Brad J. Core
Brad J. Core, P.S. #8004

CORE CONSULTING A DIVISION OF MATERIALS TESTING, INC. 1660 S. DEFIANCE TRAIL SPENCERVILLE, OHIO 45887 (419) 647-6163			
CLIENT: Steve Whetstone			
SURVEYED BY: J.L.S.	DATE: 8-26-2003	DRAWN BY: P.J.M.	CHECKED BY: B.J.C.
SCALE: 1" = 50'		PAGE 1	OF 2 PAGES

0-388-REV

LEGAL DESCRIPTION

Being part of a parcel of land located in the NE $\frac{1}{4}$ of the NE $\frac{1}{4}$ of Section 26, T4S, R4E, Salem Township, Auglaize County, Ohio, and prior deed referenced in Official Record 443, Page 155. Said parcel being more particularly described as follows:

Commencing, for reference, at an existing monument box at the NE corner of Section 26; thence S 1° -27'-54" W (assumed bearing) on the East line of the NE $\frac{1}{4}$ of Section 26, 412.30' to a #5 rebar set at the POINT OF BEGINNING said point being on the South line of the Miami & Erie Canal; thence the following courses:

- 1) Continue S 1° -27'-54" W on said section line, 211.87' to a set #5 Rebar, passing an existing #5 rebar at 101.20';
- 2) N 89° -37'-32" W, 263.82' to a set #5 rebar;
- 3) N 6° -35'-36" W, 87.52' to a set #5 rebar;
- 4) N 1° -27'-54" E, 144.21' to a #5 rebar set on the South line of the Miami & Erie Canal, passing a #5 rebar set at 94.09';
- 5) S 84° -33'-54" E on the South line of the Miami & Erie Canal, 75.23' to a set #5 rebar;
- 6) S 86° -02'-17" E on the South line of the Miami & Erie Canal, 201.19' to the POINT OF BEGINNING.

The above-described parcel of land contains 1.387 acres, more or less, of which 0.387 acres are occupied by road right-of-way. This parcel is subject to all legal highways and easements of record.

This legal description and the accompany plat represent an actual boundary survey conducted under the direct supervision of Brad J. Core, P.S. #8004 on August 26, 2003. All markers called for above are in place.

0-389-REV