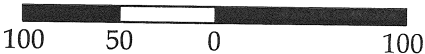


Survey of part of a parcel of land located in the NE 1/4
of Section 1, T6S, R7E, Clay Township, Auglaize County, Ohio.

Prior Deed referenced in Book 397, Page 801.

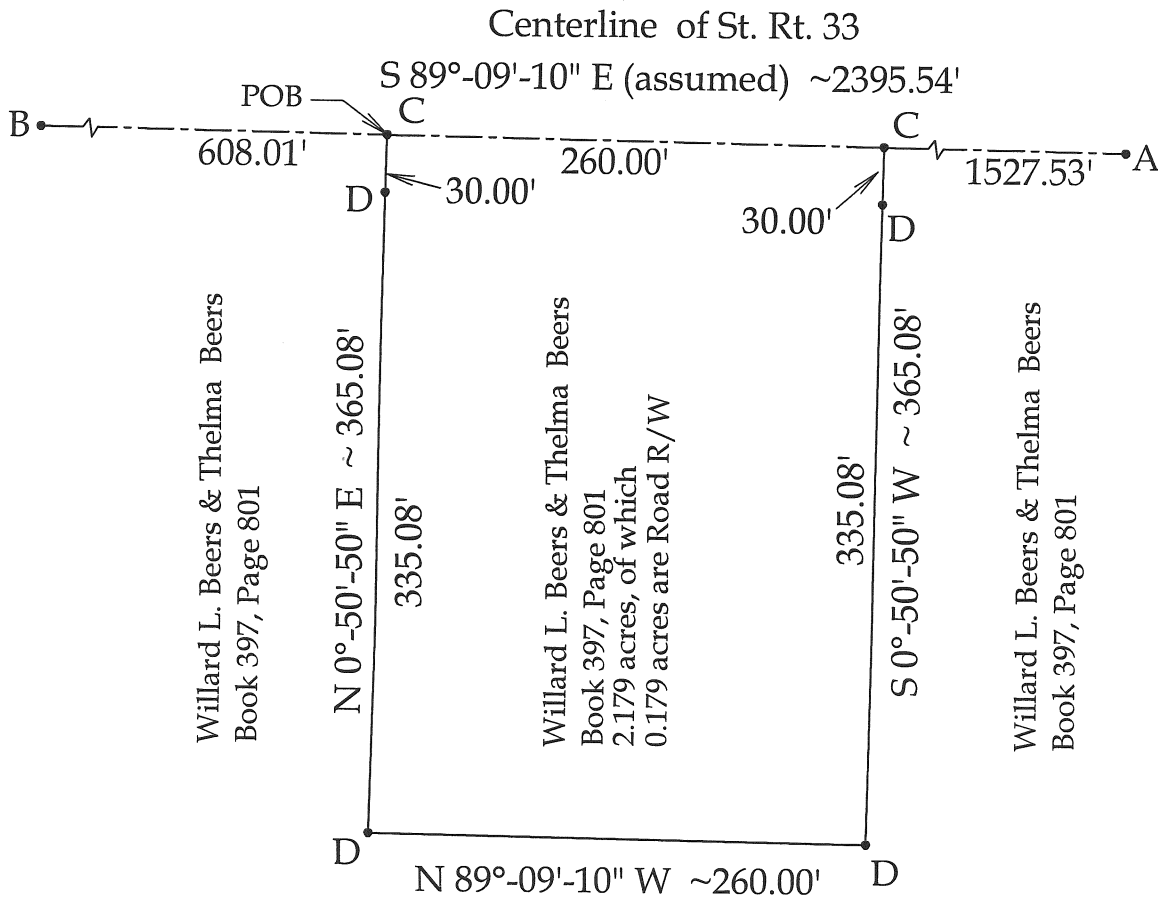


SCALE: 1" = 100'



GRAPHIC SCALE

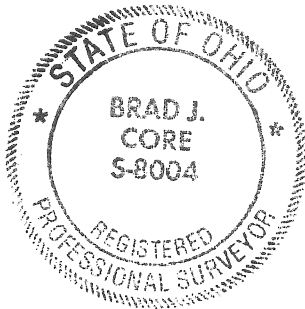
Note:
All distances called out
on this plat are measured
distances, unless otherwise
noted.



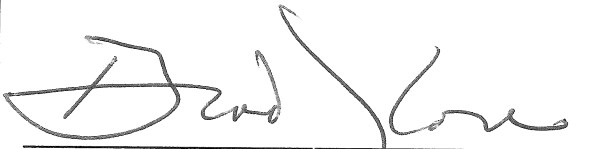
Willard L. Beers & Thelma Beers
Book 397, Page 801

Legend

- A = Existing RR Spike at the
NE corner of Section 1
- B = Existing RR Spike at the NW
corner of the NE 1/4 of Section 1
- C = Set MAG Nail
- D = Set #5 Rebar



This plat and the accompanying legal
descriptions represent an actual boundary
survey completed under my direct
supervision on October 26, 2006.


Brad J. Core, P.S. #8004

CORE CONSULTING A DIVISION OF MATERIALS TESTING, INC. 1660 S. DEFIANCE TRAIL SPENCERVILLE, OHIO 45887 (419) 647-6163			
CLIENT: Tony Beers			
SURVEYED BY: J.L.S.	DATE: 10-26-2006	DRAWN BY: J.L.S.	CHECKED BY: B.J.C.
SCALE: 1" = 100'		PAGE 1	OF 2 PAGES

Tony Beers
Page 2 of 2
October 26, 2006

LEGAL DESCRIPTION

Being part of a Parcel of land located in the NE ¼ of Section 1, T6S, R7E, Clay Township, Auglaize County, Ohio, as referenced in Book 397, Pg. 801, and more particularly described as follows:

Commencing at an existing RR Spike at the NW corner of the NE ¼ of Section 1; thence S 89°-09'-10" E on the N line of the NE ¼ of Section 1 (centerline of St. Rt. 33), 608.01' to a Mag Nail set at the POINT OF BEGINNING; thence the following courses:

1. Continuing S 89°-09'-10" E on said centerline, 260.00' to a set Mag Nail;
2. S 0°-50'-50" W, 365.08' to a set #5 rebar, passing a set #5 rebar at 30.00';
3. N 89°-09'-10" W, 260.00' to a set #5 rebar;
4. N 0°-50'-50" E, 365.08' to the POINT OF BEGINNING, passing a set #5 rebar at 335.08'.

The above-described parcel contains 2.179 acres, more or less, of which 0.179 acres are road right-of- way subject to all legal highways and easements of record.

The system of bearings for this legal description assumes the N line of the NE ¼ of Section 1 to be S 89°-09'-10" E. This legal description and accompanying plat represent an actual boundary survey completed under the direct supervision of Brad J. Core, P.S. #8004 on October 26, 2006. All markers called for above are in place.