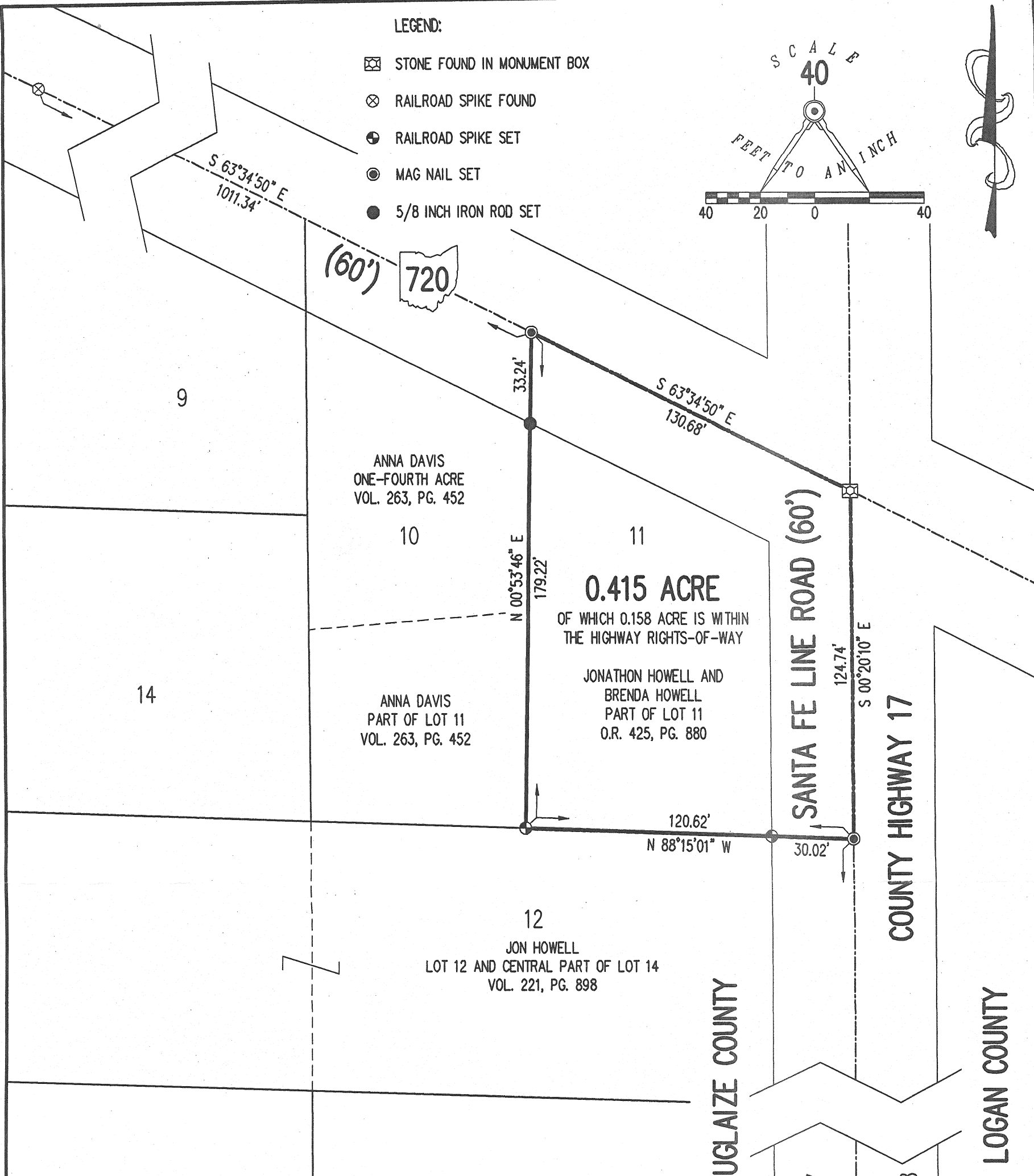
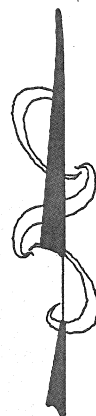
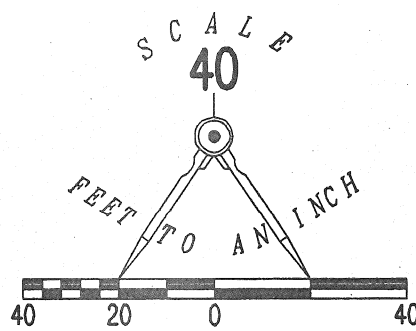


LEGEND:

- ☒ STONE FOUND IN MONUMENT BOX
- ⊗ RAILROAD SPIKE FOUND
- ⊕ RAILROAD SPIKE SET
- ⊙ MAG NAIL SET
- 5/8 INCH IRON ROD SET



RETRACEMENT SURVEY OF THE  
JONATHON HOWELL AND  
BRENDA HOWELL  
PART OF LOT 11  
HAMLET OF SANTA FE  
PLAT BOOK 1A, PAGE 342  
OFFICIAL RECORD 425, PAGE 880  
FRACTIONAL SECTION 25, TOWN 6, RANGE 7  
HAMLET OF SANTA FE  
CLAY TOWNSHIP  
AUGLAIZE COUNTY, OHIO

CLAY TOWNSHIP, AUGLAIZE COUNTY

STOKES TOWNSHIP, LOGAN COUNTY

SECTION 25, TOWN 6, RANGE 7

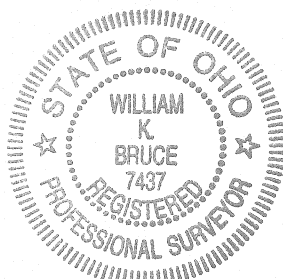
SECTION 30, TOWN 6, RANGE 8  
(BASIS FOR BEARINGS)

SURVEYED BY:

*William K. Bruce*

WILLIAM K. BRUCE  
PROFESSIONAL SURVEYOR 7437  
FEBRUARY 11, 2008

COPYRIGHT 2008 BY:  
LEE SURVEYING & MAPPING CO., INC.  
117 North Madriver Street  
BELLEFONTAINE, OHIO 43311  
(937) 593-7335  
surveys@lsminc.us  
D0208 4574018 L-4574-3



ORIGINAL STAMP IN GREEN

KSS

2 WORKING DAYS  
BEFORE YOU DIG  
CALL TOLL FREE 800-362-2764  
OHIO UTILITIES PROTECTION SERVICE.

Q-23

# Lee Surveying and Mapping Co., Inc.

Land Surveys • Topography • Subdivisions • Construction Layout

117 N. Madriver St.  
Bellefontaine OH 43311



Phone: (937) 593-7335  
Fax: (937) 593-7444

## HOWELL 0.415 ACRE

Lying in Fractional Section 25, Town 6, Range 7, Hamlet of Santa Fe, Clay Township, Auglaize County, Ohio.

Being all of the Jonathon Howell and Brenda Howell part of Lot 11 Hamlet of Santa Fe (Plat Book 1A, Page 342) as deeded and described in Official Record 425, Page 880 of the Auglaize County Records of Deeds and being more particularly described as follows:

Beginning on a stone found in a monument box on the east line of fractional Section 25 at the intersection of the center-lines of Ohio Route 720 and Santa Fe Line Road (Logan County Highway 17) on the east line of the Clay Township, Auglaize County line and the west line of the Stokes Township, Logan County line.

THENCE, with the center-line of Santa Fe Line Road (60 feet wide), the east line of fractional Section 25, the east line of the Clay Township, Auglaize County line and the west line of the Stokes Township, Logan County line, S 0°-20'-10" E, a distance of 124.74 feet to a MAG nail set.

THENCE, with the north line of the Jon Howell Lot 12 (Vol. 221, Pg. 898), N 88°-15'-01"W, a distance of 120.62 feet to a railroad spike set, passing a railroad spike set at 30.02 feet.

THENCE, with the east line of the Anna Davis part of Lot 11 and one-fourth acre (Vol. 263, Pg. 452), N 0°-53'-46"E, a distance of 179.22 feet to a MAG nail set on the center-line of Ohio Route 720, passing a 5/8 inch iron rod set at 145.98 feet.

THENCE, with the center-line of Ohio Route 720 (60 feet wide), S 63°-34'-50"E, a distance of 130.68 feet to the point of beginning.

Containing 0.415 acre, of which 0.158 acre is within the highway rights-of-way.

The basis for bearings is the east line of Section 25, being N 0°-20'-10"W, and all other bearings are from angles and distances measured in a field survey by Lee Surveying and Mapping Co., Inc. on February 10, 2008.



ORIGINAL STAMP IN GREEN

Description prepared by:

A handwritten signature in black ink, appearing to read 'William K. Bruce'.

William K. Bruce  
Professional Surveyor 7437  
February 12, 2008

4574018