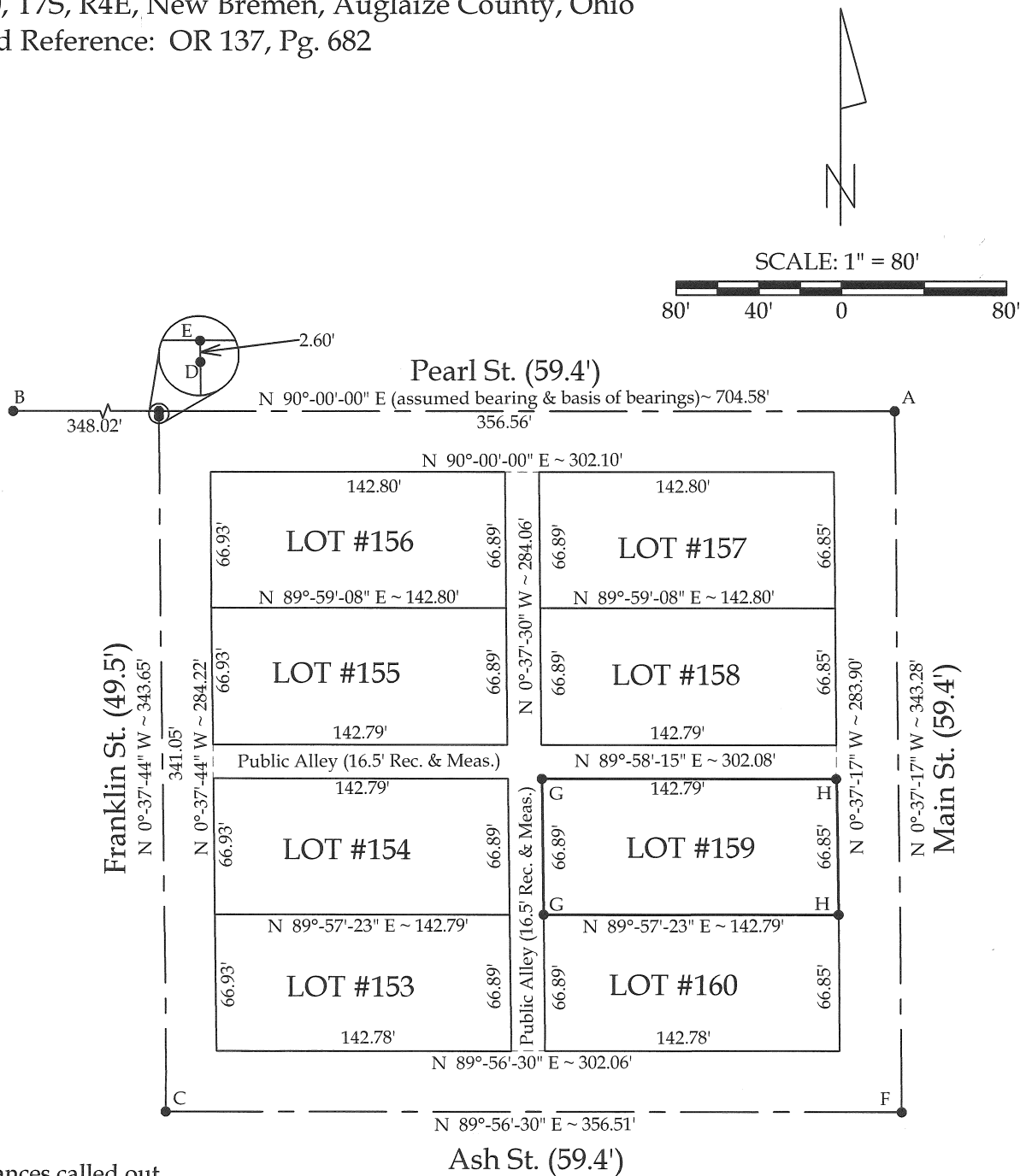


Survey of Lot #159 located in the North Addition to the Town of New Bremen,  
Section 10, T7S, R4E, New Bremen, Auglaize County, Ohio  
Prior Deed Reference: OR 137, Pg. 682



Note:  
All distances called out  
on this plat are measured  
distances, unless otherwise  
noted.

NOTE:  
The Record distances for all Lots on this plat are  
66.00' wide and 142.89' deep.



This Plat represents an actual boundary survey  
completed under my direct supervision on May  
28, 2008.

Brad J. Core, P.S. #8004

- Legend
- A = Existing Mag Nail at the intersection of the centerlines of Main St. and Pearl St.
  - B = Existing #5 Rebar at the intersection of the centerlines of Pearl St. and Herman St.
  - C = Existing Mag Nail at the intersection of the centerlines of Ash St. and Franklin St.
  - D = Existing Mag Nail on the Centerline of Franklin St.
  - E = Set Mag Nail at the intersection of the centerlines of Pearl St. and Franklin St.
  - F = Set Mag Nail at the intersection of the centerlines of Main St. and Ash St.
  - G = Set #5 Rebar
  - H = Set Mag Nail in concrete sidewalk

CORE CONSULTING A DIVISION OF MATERIALS TESTING. INC. 1660 S. DEFIANCE TRAIL SPENCERVILLE, OHIO 45887 419-647-6163			
CLIENT: Jim Nagel			
SURVEYED BY: J.L.S.	DATE: 5-28-2008	DRAWN BY: J.L.S.	DATE: 5-28-2008
SCALE: 1" = 80'		PAGE 1	OF 1