

# CRUMRINE SURVEY

## 4.252 ACRE PARCEL SPLIT

Being a part of the Northeast Quarter of the Northeast Quarter of  
Section 32, Duchouquet Township, Town-4-South, Range-6-East,  
County of Auglaize, State of Ohio

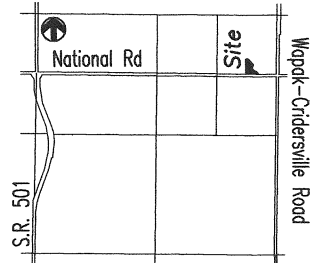


### LEGEND

- Iron Pin (set)
- ▲ Railroad Spike (found)
- △ Mag Nail (set)
- Monument Box

PipeLine Easement  
Volume: Misc Volume 4  
Page: 303

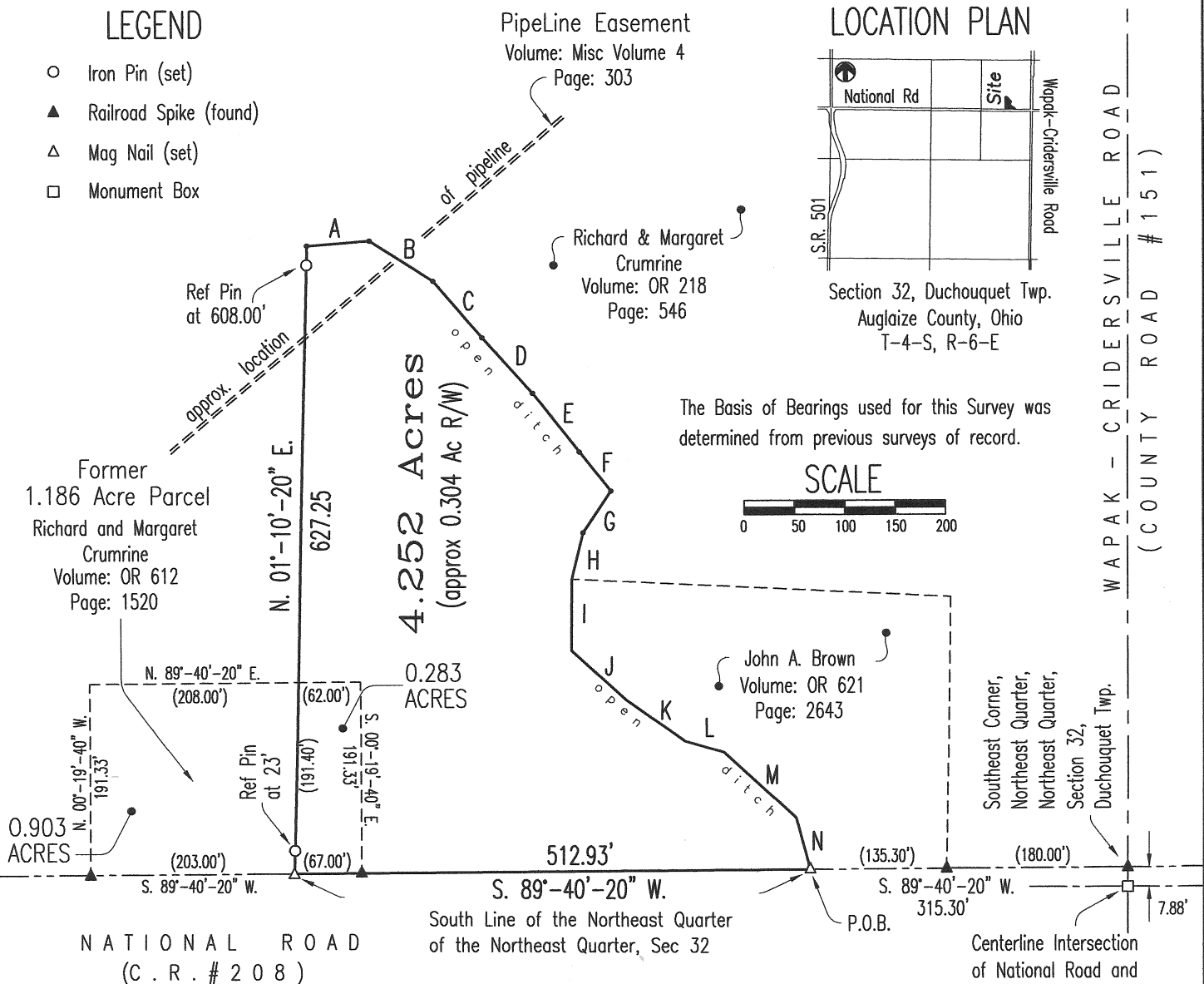
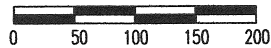
### LOCATION PLAN



Section 32, Duchouquet Twp.  
Auglaize County, Ohio  
T-4-S, R-6-E

The Basis of Bearings used for this Survey was  
determined from previous surveys of record.

### SCALE



NATIONAL ROAD  
(C. R. # 208)

The Centerline of National Road bears  
S. 89°-56'-40" W. from Mon Box at CR 151  
The South Line of the NE 1/4, NE 1/4, bears  
S. 89°-40'-20" W. from RR Spike at CR 151

### ATTEST

*Ted K. Schnell*

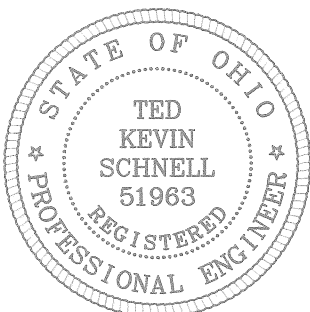
Ted K. Schnell  
Professional Engineer  
Professional Surveyor

### TRAVERSE TABLE

|     |                   |        |
|-----|-------------------|--------|
| (A) | N. 85°-33'-18" E. | 62.55' |
| (B) | S. 57°-27'-54" E. | 75.00' |
| (C) | S. 40°-42'-52" E. | 75.00' |
| (D) | S. 42°-16'-48" E. | 75.00' |
| (E) | S. 38°-22'-17" E. | 75.00' |
| (F) | S. 38°-55'-27" E. | 50.00' |
| (G) | S. 33°-57'-20" W. | 50.00' |
| (H) | S. 13°-48'-41" W. | 47.72' |
| (I) | S. 00°-40'-57" W. | 71.47' |
| (J) | S. 47°-49'-51" E. | 74.13' |
| (K) | S. 54°-45'-43" E. | 71.01' |
| (L) | S. 73°-54'-30" E. | 40.00' |
| (M) | S. 47°-36'-20" E. | 97.37' |
| (N) | S. 15°-07'-56" E. | 53.77' |

### SURVEY REF's

- 1) Reinhart Survey  
for Warren Bailey  
Book F, Page 71
- 2) Jack McDonald Survey  
for Richard Crumrine  
Book G, Page 506C
- (3) Jauert Survey  
for Richard Crumrine  
Book H, Page 434
- (3) Jauert Survey  
for Phil Crumrine  
Book K, Page 741



### H & S Civil Engineers and Land Surveyors

913 Fieldstone Court Wapakoneta, Ohio 45895

RICHARD & MARGARET CRUMRINE  
client

32  
section

DUCHOUQUET  
township

AUGLAIZE  
county

OHIO  
state

11/05/12  
date



This Survey Plat and Description is Recorded in Survey Book  
R , Page 250 , Auglaize County Engineer's Tax  
Map Office.

**H & S Civil Engineers and Land Surveyors**

913 Fieldstone Court

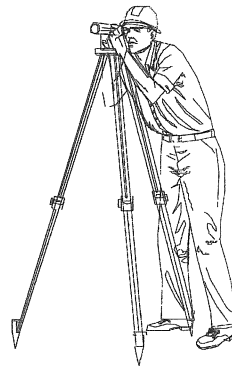
Wapakoneta, Ohio 45895

Phone (419) 738-4758

Fax (419) 739-7631

e-mail: hscivil@bright.net

Ted K. Schnell P.E., P.S.



**Surveyor's Description of 4.252 Acre Parcel**

The following described parcel of land is a part of the Northeast Quarter of the Northeast Quarter of Section 32, Duchouquet Township, Town-4-South, Range-6-East, Auglaize County, Ohio, and is more particularly described as follows:

Commencing for reference at a Railroad Spike (found) situated at the Southeast corner of the Northeast Quarter of the Northeast Quarter of said Section 32, Duchouquet Township, Town-4-South, Range-6-East;

Thence with a bearing of S. 89°-40'-20" W. along the South line of the Northeast Quarter of the Northeast Quarter of said Section 32, Duchouquet Township, Town-4-South, Range-6-East, for a distance of 315.30 feet to a Mag Nail (set) and the PLACE OF BEGINNING;

Thence continuing with a bearing of S. 89°-40'-20" W. along the South line of the Northeast Quarter of the Northeast Quarter of said Section 32, Duchouquet Township, Town-4-South, Range-6-East, for a distance of 512.93 feet to a Mag Nail (set);

Thence with a bearing of N. 01°-10'-20" E. for a distance of 627.25 feet to a point in the confines of an open ditch, and passing thru Iron Pins (set) for reference at a distance of 23.00 feet and 608.00 feet;

Thence with a bearing of N. 85°-33'-18" E. along the confines of an open ditch for a distance of 62.55 feet to a point;

Thence with a bearing of S. 57°-27'-54" E. along the confines of an open ditch for a distance of 75.00 feet to a point;

Thence with a bearing of S. 40°-42'-52" E. along the confines of an open ditch for a distance of 75.00 feet to a point;

Thence with a bearing of S. 42°-16'-48" E. along the confines of an open ditch for a distance of 75.00 feet to a point;

Thence with a bearing of S. 38°-22'-17" E. along the confines of an open ditch for a distance of 75.00 feet to a point;

Thence with a bearing of S. 38°-55'-27" E. along the confines of an open ditch for a distance of 50.00 feet to a point;

Thence with a bearing of S. 33°-57'-20" W. along the confines of an open ditch for a distance of 50.00 feet to a point;

Thence with a bearing of S. 13°-48'-41" W. along the confines of an open ditch for a distance of 47.72 feet to a point;

Thence with a bearing of S. 00°-40'-57" W. along the confines of an open ditch for a distance of 71.47 feet to a point;

Thence with a bearing of S. 47°-49'-51" E. along the confines of an open ditch for a distance of 74.13 feet to a point;

Thence with a bearing of S. 54°-45'-43" E. along the confines of an open ditch for a distance of 71.01 feet to a point;

Thence with a bearing of S. 73°-54'-30" E. along the confines of an open ditch for a distance of 40.00 feet to a point;

Thence with a bearing of S. 47°-36'-20" E. along the confines of an open ditch for a distance of 97.37 feet to a point;

Thence with a bearing of S. 15°-07'-56" E. along the confines of an open ditch for a distance of 53.77 feet to a Mag Nail (set) and the original PLACE OF BEGINNING.

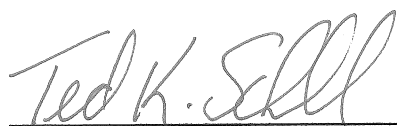
Containing in all 4.252 Acres of land, of which approximately 0.304 Acre being previously dedicated for highway purposes. The above described tract of land is subject to any or all legal easements, reservations, or restrictions of record upon said premises.

The above described parcel of land is subject to a pipeline easement as recorded in Miscellaneous Records Volume 4, Page 303, Auglaize County Recorder's Office.

The basis of bearings used for this description were determined from previous surveys of record.

Deed References: Deed Volume OR 218, Page 546, and Deed Volume OR 612, Page 1520, Auglaize County Recorder's Office.

Prepared By:



Ted K. Schnell  
Professional Engineer  
Professional Surveyor

