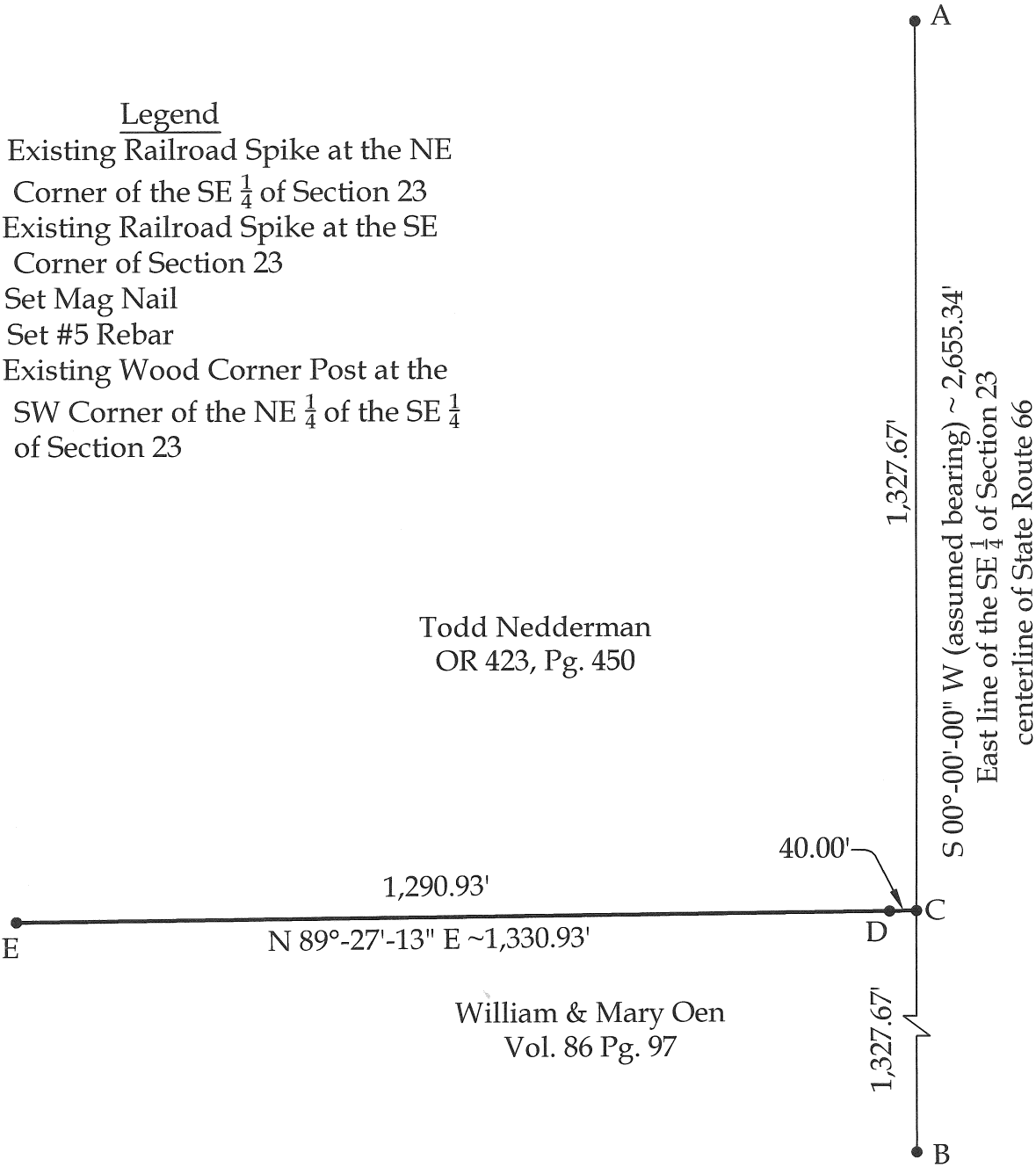


- Legend
- A = Existing Railroad Spike at the NE Corner of the SE 1/4 of Section 23
 - B = Existing Railroad Spike at the SE Corner of Section 23
 - C = Set Mag Nail
 - D = Set #5 Rebar
 - E = Existing Wood Corner Post at the SW Corner of the NE 1/4 of the SE 1/4 of Section 23


Todd Nedderman
OR 423, Pg. 450

William & Mary Oen
Vol. 86 Pg. 97

Note:
All distances shown are measured unless otherwise noted.



This plat represents an actual boundary survey completed under my direct supervision on November 14, 2012.


Brad J. Core, P.S. #8004 R-2163

CORE CONSULTING A DIVISION OF MATERIALS TESTING, INC. 1660 S. DEFIANCE TRAIL SPENCERVILLE, OHIO 45887 (419) 647-6163			
CLIENT: Todd Nedderman			
SURVEYED BY: G.A.D.	DATE: 11-14-2012	DRAWN BY: G.A.D.	CHECKED BY: B.J.C.
SCALE: 1" = 250'		PAGE 1	OF PAGES 1