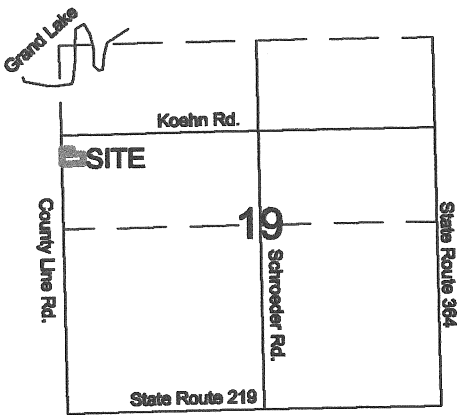


STEINKE INVESTMENTS, LTD

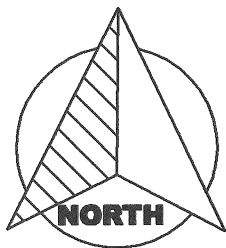
Part of the NW 1/4 of Section 19, Town-6-South, Range-4-East,
St. Marys Township, Auglaize County, Ohio.



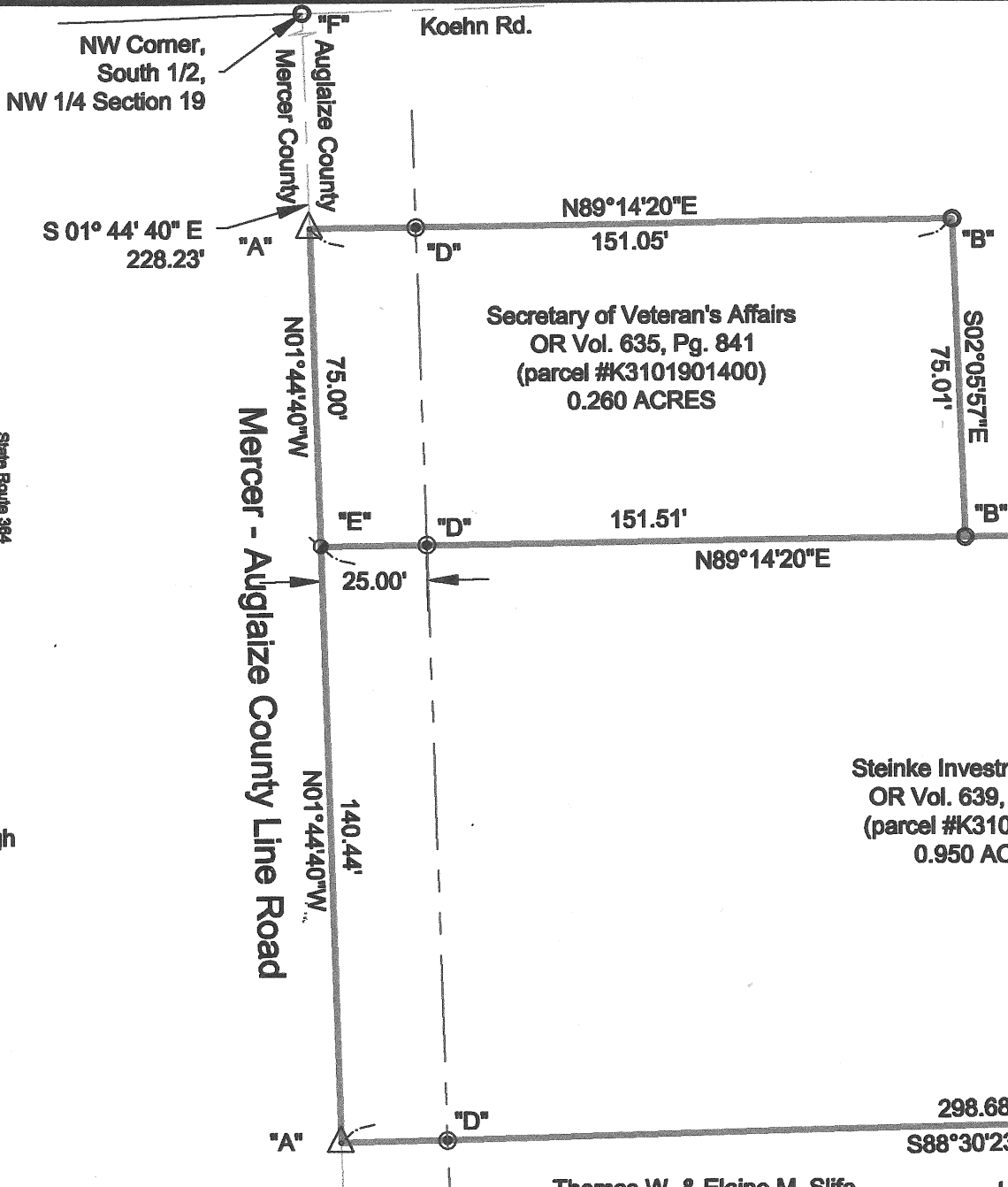
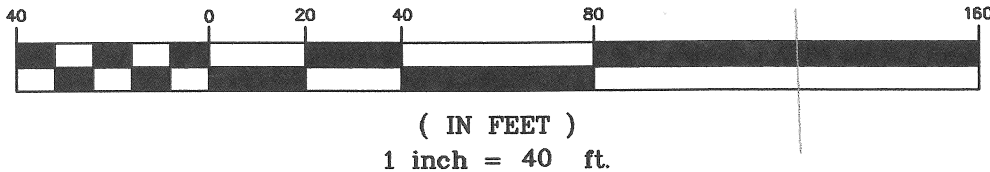
VICINITY MAP

LEGEND

- "A" Railroad Spike (found)
- "B" 5/8" re-rod (found) Marbaugh
- "C" 5/8" re-rod (found) Geeslin
- "D" 5/8" re-rod w/cap (set)
- "E" Mag-Nail (set)
- "F" 3/4" Iron Bar (found)

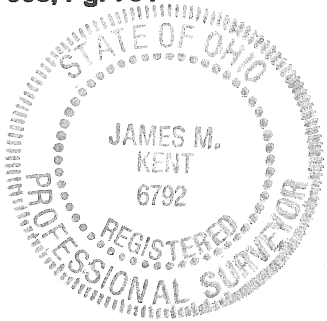


GRAPHIC SCALE



Thomas W. & Elaine M. Slife
OR Vol. 603, Pg. 791

I hereby certify that this plat is representative
of a field survey performed under my direct supervision.



James M. Kent, Professional Surveyor No. 6792

kent surveying, inc.

acad-Hans Steinke Dwg #5484-A
April 2, 2014

R-628