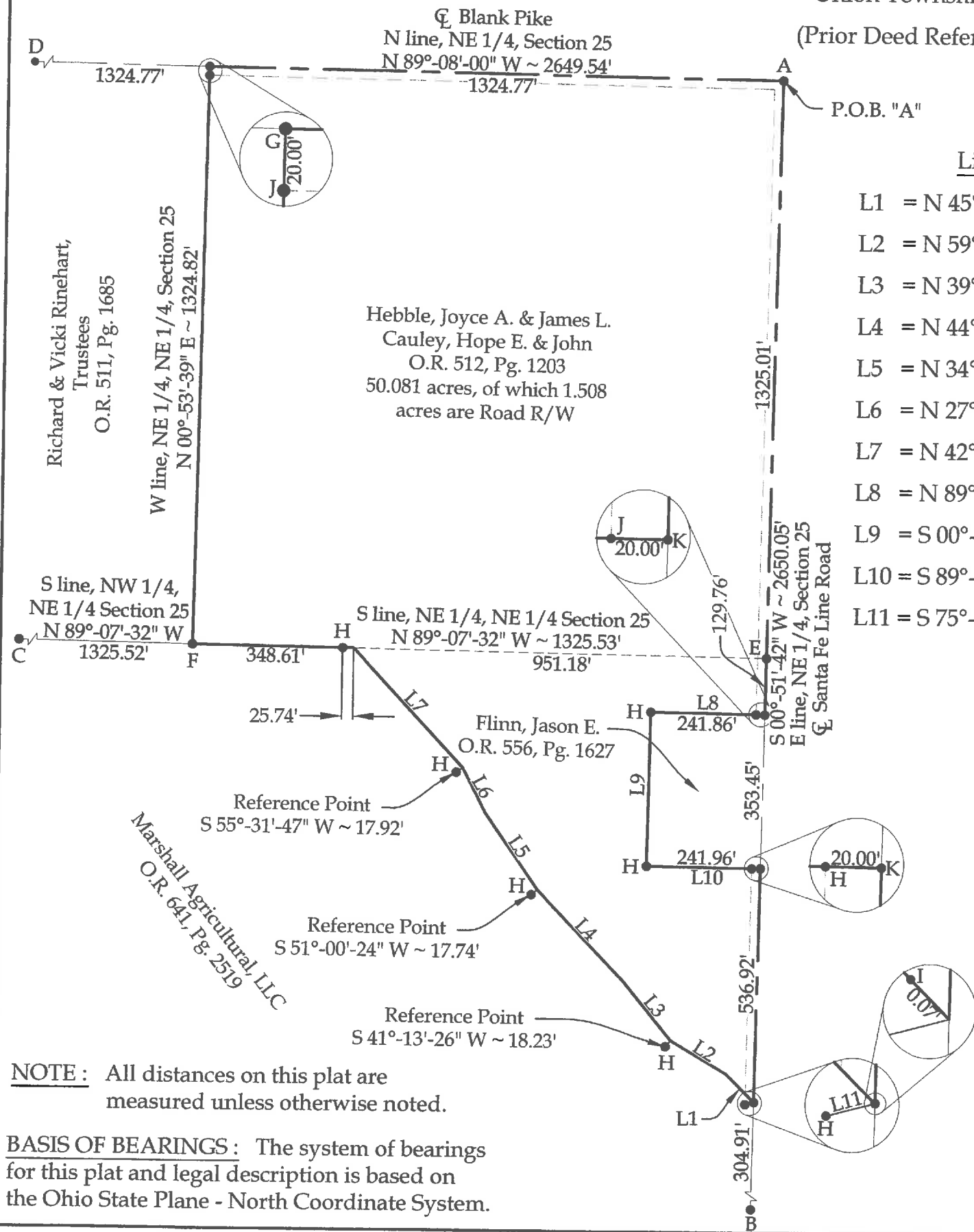


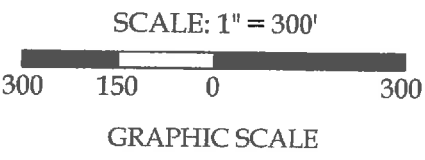
Survey of Parcels #L34-025-010-00 & #L34-025-009-02 and being a part of the E 1/2 of the NE 1/4 of Section 25, Town 5 South, Range 7 East, Union Township, Auglaize County, Ohio.

(Prior Deed Referenced in O.R. 512, Pg. 1203)



Line Data

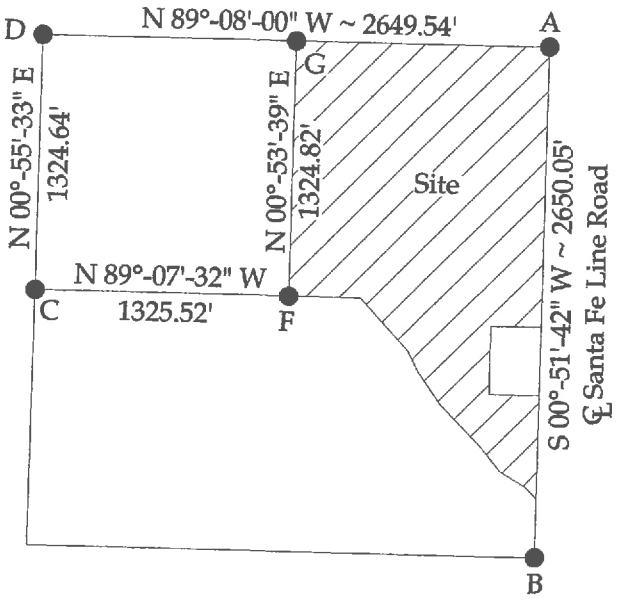
- L1 = N 45°-04'-27" W ~ 89.46'
- L2 = N 59°-14'-31" W ~ 150.27'
- L3 = N 39°-32'-05" W ~ 175.57'
- L4 = N 44°-12'-14" W ~ 290.40'
- L5 = N 34°-44'-37" W ~ 213.72'
- L6 = N 27°-26'-35" W ~ 116.00'
- L7 = N 42°-58'-30" W ~ 372.27'
- L8 = N 89°-08'-57" W ~ 261.86'
- L9 = S 00°-52'-37" W ~ 354.02'
- L10 = S 89°-16'-19" E ~ 261.96'
- L11 = S 75°-24'-49" W ~ 20.97'



Legend

- A = Existing Monument Box at the NE corner of the NE 1/4 of Section 25
- B = Existing Monument Box at the SE corner of the NE 1/4 of Section 25
- C = Existing #5 Rebar at the SW corner of the NW 1/4 of the NE 1/4 of Section 25
- D = Existing Monument Box at the NW corner of the NE 1/4 of Section 25
- E = Existing Mag Nail at the SE corner of the NE 1/4 of the NE 1/4 of Section 25
- F = Set #5 Rebar at the SW corner of the NE 1/4 of the NE 1/4 of Section 25
- G = Set Mag Nail at the NW corner of the NE 1/4 of the NE 1/4 of Section 25
- H = Existing #5 Rebar
- I = Existing Mag Nail
- J = Set #5 Rebar
- K = Set Mag Nail

NE 1/4 of the NE 1/4 of Section 25



This plat and the accompanying legal descriptions represent an actual boundary survey completed under my direct supervision on June 18, 2015.

Kyle J. Binkley
Kyle J. Binkley, P.S. #8587

Binkley
LAND SURVEYING, LLC
121 W. Auglaize Street
Wapakoneta, Ohio 45895
(419) 236-3768

NOTE: All distances on this plat are measured unless otherwise noted.

BASIS OF BEARINGS: The system of bearings for this plat and legal description is based on the Ohio State Plane - North Coordinate System.

This plat is recorded in Survey Book "S", Pages 157-159, in the Auglaize County Engineer's Office.

CLIENT: Hebble Survey - Section 25			
SURVEYED BY: K.J.B.	DATE: 06-18-2015	DRAWN BY: K.J.B.	CHECKED BY: K.J.B.
SCALE: 1" = 300'	PAGE 1	OF 3	PAGES 3

LEGAL DESCRIPTION

Being a part of Parcels #L34-025-010-00 and #L34-025-009-02 and being a part of the E ½ of the NE ¼ of Section 25, Town 5 South, Range 7 East, Union Township, Auglaize County, Ohio (Prior Deed Reference O.R. 512, Pg. 1203), more particularly described as follows:

Beginning at an existing Monument Box at the NE corner of the NE ¼ of Section 25; thence the following courses:

1. S 00°-51'-42" W with the E line of the NE ¼ of Section 25 (centerline of Santa Fe Line Road), 1454.77' to a set Mag Nail, passing an existing Mag Nail at 1325.01' at the SE corner of the NE ¼ of the NE ¼ of Section 25;
2. N 89°-08'-57" W, 261.86' to an existing #5 Rebar, passing a #5 Rebar set at 20.00';
3. S 00°-52'-37" W, 354.02' to an existing #5 Rebar;
4. S 89°-16'-19" E, 261.96' to a Mag Nail set on the E line of the NE ¼ of Section 25 (centerline of Santa Fe Line Road), passing an existing #5 Rebar at 241.96';
5. S 00°-51'-42" W with said fractional section line, 536.92' to a point, as being referenced by an existing Mag Nail at N 45°-04'-27" W, 0.07';
6. N 45°-04'-27" W, 89.46' to a point within the banks of an open ditch;
7. N 59°-14'-31" W, 150.27' to a point within the banks of an open ditch, as referenced by an existing #5 Rebar at S 41°-13'-26" W, 18.23';
8. N 39°-32'-05" W, 175.57' to a point within the banks of an open ditch;
9. N 44°-12'-14" W, 290.40' to a point within the banks of an open ditch, as referenced by an existing #5 Rebar at S 51°-00'-24" W, 17.74';
10. N 34°-44'-37" W, 213.72' to a point within the banks of an open ditch;
11. N 27°-26'-35" W, 116.00' to a point within the banks of an open ditch, as referenced by an existing #5 Rebar at S 55°-31'-47" W, 17.92';
12. N 42°-58'-30" W, 372.27' to a point within the banks of an open ditch;
13. N 89°-07'-32" W with the S line of the NE ¼ of the NE ¼ of Section 25, 374.35' to a #5 Rebar set at the SW corner of the NE ¼ of the NE ¼ of Section 25, passing an existing #5 Rebar at 25.74';
14. N 00°-53'-39" E with the W line of the NE ¼ of the NE ¼ of Section 25, 1324.82' to a Mag Nail set on the N line of the NE ¼ of Section 25 (centerline of Blank Pike), passing a set #5 Rebar at 1304.82';

15. S 89°-08'-00" E with said fractional section line, 1324.77' to the POINT OF BEGINNING.

The above described parcel contains 50.081 acres, more or less, of which 1.508 acres are occupied by road right-of-way, subject to all legal highways and easements of record.

The system of bearings for this legal description is based on Ohio State Plane – North Coordinate System NAD83 (2011). This legal description and accompanying plat represent an actual boundary survey completed under the direct supervision of Kyle J. Binkley, P.S. #8587 on June 18, 2015. All markers called for above are in place.



A handwritten signature in black ink, appearing to read "K. Binkley", written over a light gray horizontal line.