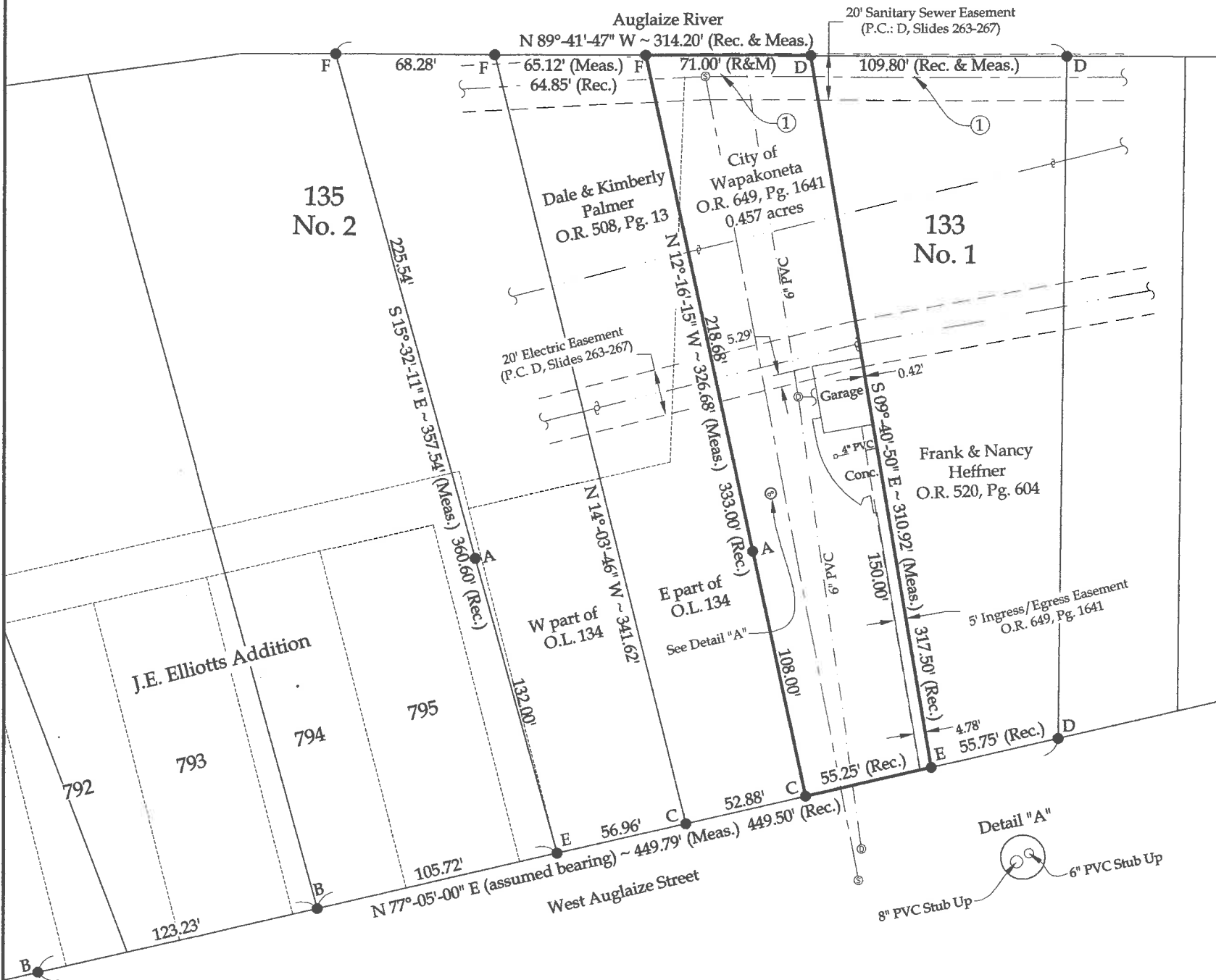
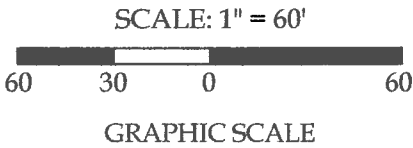


Survey of Parcel #B07-844-002-00 and being a part of Outlots #133 & #135 No. 2 and being a part of Fraction 5, Section 29, Town 5 South, Range 6 East, City of Wapakoneta, Auglaize County, Ohio.
(Prior Deed Referenced in O.R. 649, Pg. 1641)



Legend

- A = Existing #5 Rebar
- B = Existing 1" Iron Pin
- C = Existing 2" Iron Pipe
- D = Set #5 Rebar
- E = Set Mag Nail in Concrete Drive
- F = Set #5 Rebar, as based on previous survey R-666 of the Auglaize County Tax Map Office
- Utility Pole
- Storm Sewer Manhole
- Sanitary Sewer Manhole
- Easement
- Overhead Wires
- Centerline Sanitary Sewer Pipe
- Centerline Storm Sewer Pipe



This plat and the accompanying legal description represent an actual boundary survey completed under my direct supervision on February 15, 2016.

Surveyor's Note

① Plat dimensions held over deed dimensions as shown in "Plat and Field Notes of West Auglaize Street Resurvey" as shown in P.B. A, Pgs. 1-2 of the Auglaize County Tax Map Office.

This plat is recorded in Survey Book "S", Page 313, in the Auglaize County Engineer's Office.

BASIS OF BEARINGS: The system of bearings for this plat is based on the northerly right-of-way line of Auglaize Street being an assumed bearing of N 77°-05'-00" E.

NOTE: All distances on this plat are measured unless otherwise noted.

Auglaize Co. Tax Map
Survey Book S-313

Kyle J. Binkley, P.S. #8587

Binkley
LAND SURVEYING, LLC
121 W. Auglaize Street
Wapakoneta, Ohio 45895
(419) 236-3768

CLIENT: City of Wapakoneta			
SURVEYED BY: K.J.B.	DATE: 02-15-2016	DRAWN BY: K.J.B.	CHECKED BY: K.J.B.
SCALE: 1" = 60'	PAGE 1	OF 1	PAGES 1