

Revised 02/15/2017

Survey of a part of Parcels #B05-331-008-00 & B05-331-008-01 and being a part of the S $\frac{1}{2}$ of the SW $\frac{1}{4}$ of Section 33, Town 4 South, Range 6 East and a part of Parcel #B05-004-001-00 and being a part of the NW $\frac{1}{4}$ of Section 4, Town 5 South, Range 6 East, Duchouquet Township, Auglaize County, Ohio.


(Prior Deeds Referenced in O.R. 569, Pg. 551 & O.R. 564, Pg. 1582)

Line Data

- L - 1 = S 20°-51'-05" E ~ 98.48'
- L - 2 = S 33°-55'-53" E ~ 240.69'
- L - 3 = S 42°-48'-55" E ~ 140.62'
- L - 4 = S 57°-54'-48" E ~ 70.43'
- L - 5 = N 82°-28'-22" E ~ 27.77'
- L - 6 = N 54°-56'-41" E ~ 24.44'
- L - 7 = S 63°-27'-09" E ~ 337.32'
- L - 8 = S 84°-27'-07" E ~ 313.51'
- L - 9 = S 74°-50'-50" E ~ 211.16'
- L - 10 = S 67°-45'-53" E ~ 146.75'
- L - 11 = S 17°-25'-54" E ~ 5.53'
- L - 12 = S 89°-25'-57" E ~ 189.11'
- L - 13 = S 89°-25'-24" E ~ 2653.82'
- L - 14 = N 89°-25'-24" W ~ 2662.79'
- L - 15 = S 89°-32'-33" E ~ 2653.83'
- L - 16 = N 89°-32'-33" W ~ 2673.57'
- L - 17 = S 89°-25'-24" E ~ 217.20'
- L - 18 = N 89°-01'-01" E ~ 202.64' (R & M)
- L - 19 = N 00°-51'-42" E ~ 140.00' (R & M)
- L - 20 = S 89°-01'-01" W ~ 202.64' (R & M)
- L - 21 = S 00°-34'-38" W ~ 295.31' (R & M)
- L - 22 = S 80°-52'-25" E ~ 79.96'
- L - 23 = S 42°-48'-55" E ~ 134.31'
- L - 24 = S 33°-55'-53" E ~ 53.71'
- L - 25 = N 00°-36'-01" E ~ 495.00' (R & M)

This plat is recorded in Survey Book "S", Pages 607, in the Auglaize County Engineer's Office.

BASIS OF BEARINGS: The system of bearings for this plat and legal description is based on the Ohio State Plane - North Coordinate System NAD 83 (2011).

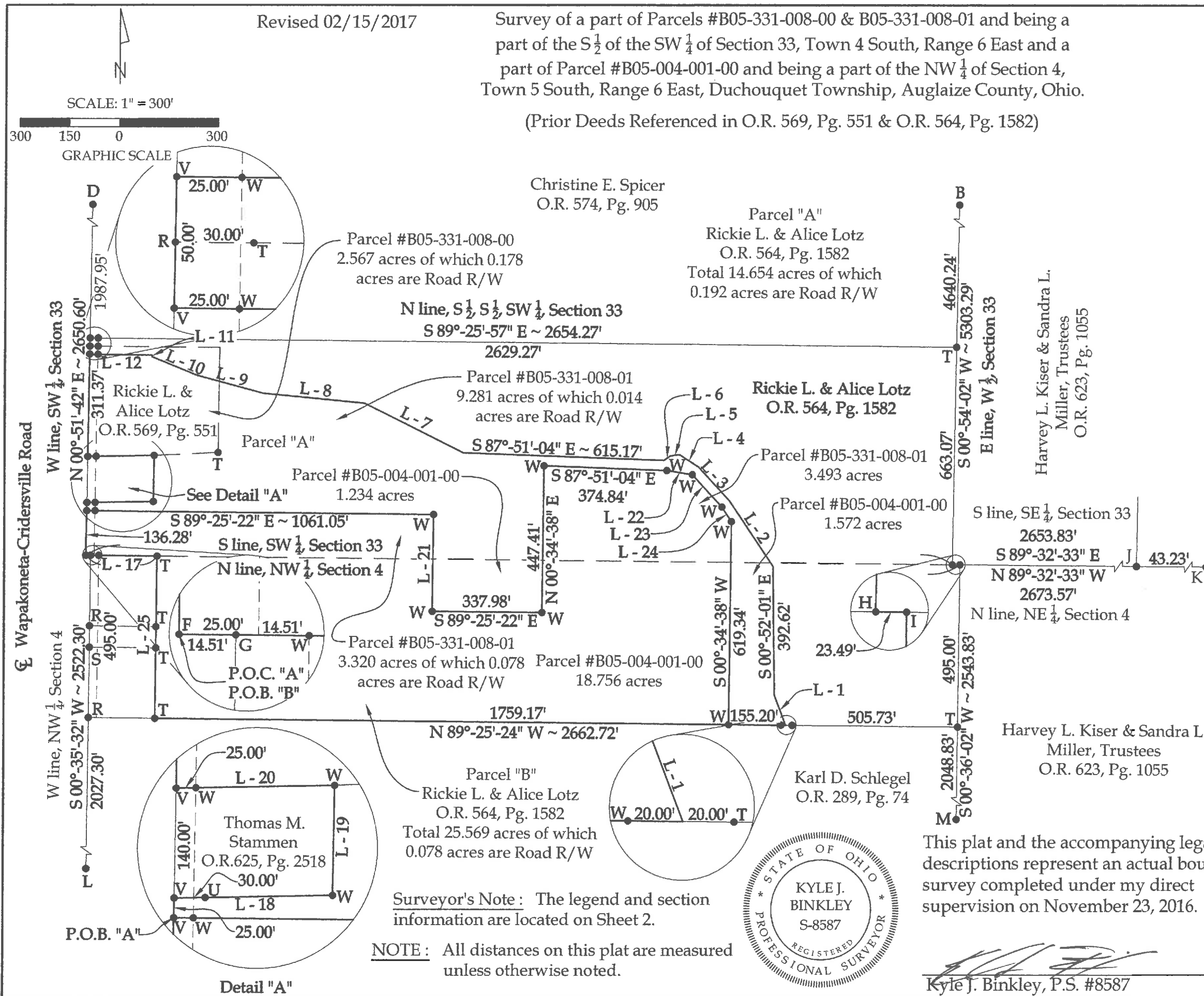


Binkley
LAND SURVEYING, LLC

121 W. Auglaize Street
Wapakoneta, Ohio 45895
(419) 236-3768

CLIENT: Rickie Lotz			
SURVEYED BY: K.J.B.	DATE: 11-23-2016	DRAWN BY: K.J.B.	CHECKED BY: K.J.B.
SCALE: 1" = 300'		PAGE 1	OF 5

Wapakoneta-Cridersville Road



Surveyor's Note: The legend and section information are located on Sheet 2.

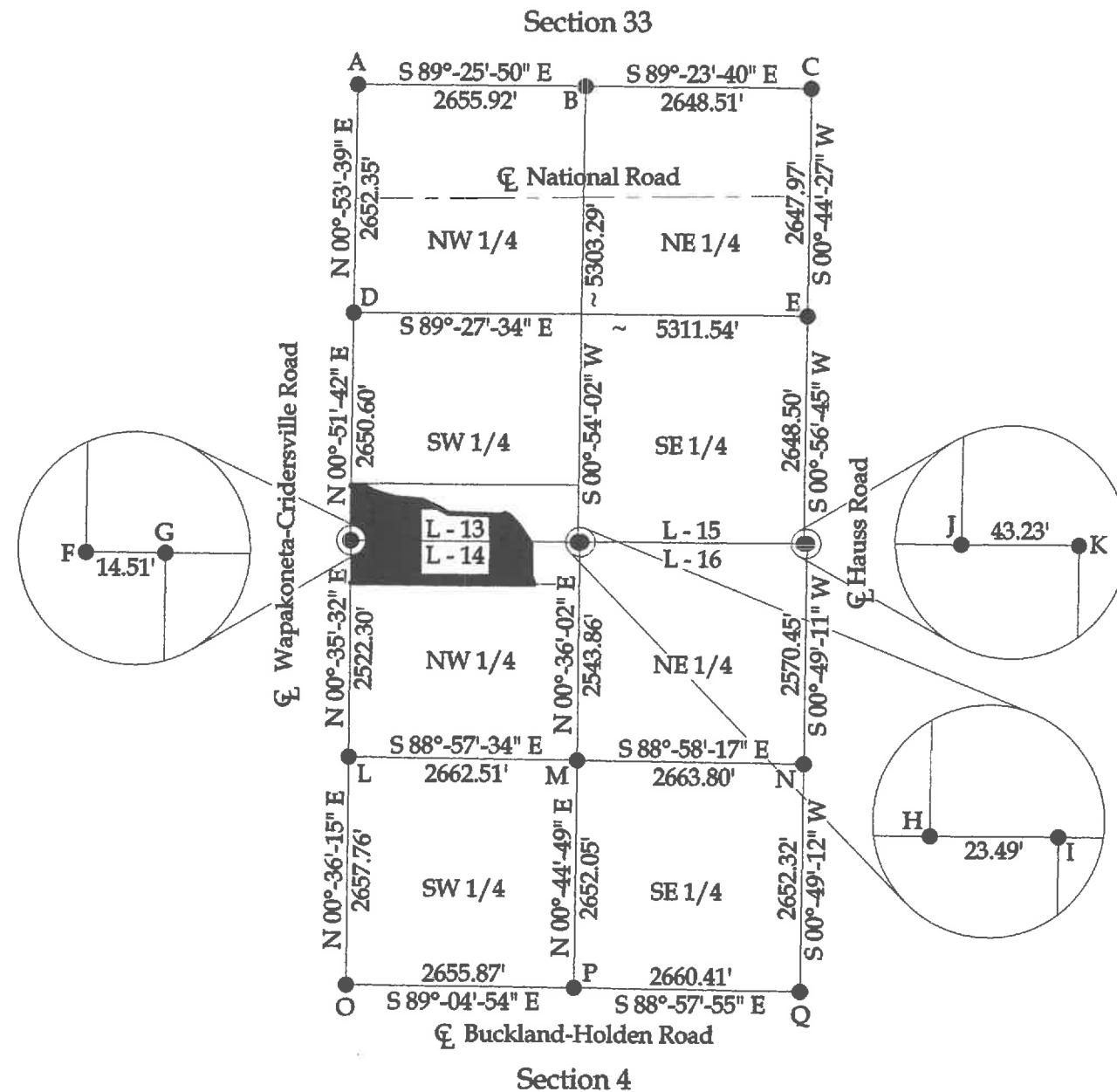
NOTE: All distances on this plat are measured unless otherwise noted.



This plat and the accompanying legal descriptions represent an actual boundary survey completed under my direct supervision on November 23, 2016.

Kyle J. Binkley, P.S. #8587

Survey of a part of Parcels #B05-331-008-00 & B05-331-008-01 and being a part of the S $\frac{1}{2}$ of the SW $\frac{1}{4}$ of Section 33, Town 4 South, Range 6 East and a part of Parcel #B05-004-001-00 and being a part of the NW $\frac{1}{4}$ of Section 4, Town 5 South, Range 6 East, Duchouquet Township, Auglaize County, Ohio.
(Prior Deeds Referenced in O.R. 569, Pg. 551 & O.R. 564, Pg. 1582)




Legend

- A = Existing Mag Nail at the NW corner of Section 33
- B = Existing Stone at the NW corner of the NE $\frac{1}{4}$ of Section 33
- C = Existing Monument Box at the NE corner of Section 33
- D = Existing Monument Box at the SW corner of the NW $\frac{1}{4}$ of Section 33
- E = Existing Mag Nail at the SE corner of the NE $\frac{1}{4}$ of Section 33
- F = Railroad Spike set at the SW corner of Section 33
- G = Existing Monument Box at the NW corner of Section 4
- H = #5 Rebar set at the SE corner of the SW $\frac{1}{4}$ of Section 33
- I = Existing Stone at the NE corner of the NW $\frac{1}{4}$ of Section 4
- J = Existing #5 Rebar (bent) at the SE corner of Section 33
- K = Remnants (base) of Concrete Post at the NE corner of Section 4
- L = Existing Monument Box at the SW corner of the NW $\frac{1}{4}$ of Section 4
- M = Existing #5 Rebar at the SE corner of the NW $\frac{1}{4}$ of Section 4
- N = Existing Monument Box at the SE corner of the NE $\frac{1}{4}$ of Section 4
- O = Existing Monument Box at the SW corner of Section 4
- P = Existing Monument Box at the SE corner of the SW $\frac{1}{4}$ of Section 4
- Q = Existing Monument Box at the SE corner of Section 4
- R = Existing Mag Nail
- S = Existing PK Nail
- T = Existing #5 Rebar
- U = Existing $\frac{1}{2}$ " Iron Pipe
- V = Set Mag Nail
- W = Set #5 Rebar

BASIS OF BEARINGS : The system of bearings for this plat and legal description is based on the Ohio State Plane - North Coordinate System NAD 83 (2011).

NOTE : All distances on this plat are measured unless otherwise noted.

 <p>121 W. Auglaize Street Wapakoneta, Ohio 45895 (419) 236-3768</p>			
CLIENT: Rickie Lotz			
SURVEYED BY: K.J.B.	DATE: 11-23-2016	DRAWN BY: K.J.B.	CHECKED BY: K.J.B.
SCALE: N.T.S.	PAGE 2	OF 5	PAGES 5

Parcel "A"
LEGAL DESCRIPTION

Being a part of Parcels #B05-331-008-00 (Prior Deed Referenced in O.R. 569, Pg. 551) & B05-331-008-01 (Prior Deed Referenced in O.R. 564, Pg. 1582) and being a part of the S ½ of the SW ¼ of Section 33, Town 4 South, Range 6 East and a part of Parcel #B05-004-001-00 and being a part of the NW ¼ of Section 4, Town 5 South, Range 6 East, Duchouquet Township, Auglaize County, Ohio, more particularly described as follows:

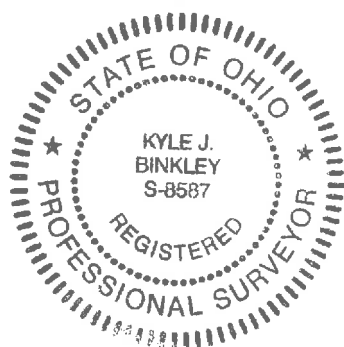
Commencing at a Railroad Spike set at the SW corner of Section 33; thence N 00°-51'-42" E with the W line of the SW ¼ of Section 33 (centerline of Wapakoneta-Cridersville Road), 136.28' to a Mag Nail set at the POINT OF BEGINNING; thence the following courses:

1. Continuing N 00°-51'-42" E with said fractional section line, 25.00' to a set Mag Nail;
2. N 89°-01'-01" E, 202.64' to a set #5 Rebar, passing an existing ½" Iron Pipe at 30.00';
3. N 00°-51'-42" E, 140.00' to a set #5 Rebar;
4. S 89°-01'-01" W, 202.64' to a Mag Nail set on the W line of the SW ¼ of Section 33 (centerline of Wapakoneta-Cridersville Road), passing a set #5 Rebar at 177.64';
5. N 00°-51'-42" E with said fractional section line, 311.37' to a set Mag Nail;
6. S 89°-25'-57" E, 189.11' to a point within the banks of an open ditch;
7. S 17°-25'-54" E within the banks of an open ditch, 5.53' to a point;
8. S 67°-45'-53" E within the banks of an open ditch, 146.75' to a point;
9. S 74°-50'-50" E within the banks of an open ditch, 211.16' to a point;
10. S 84°-27'-07" E within the banks of an open ditch, 313.51' to a point;
11. S 63°-27'-09" E within the banks of an open ditch, 337.32' to a point;
12. S 87°-51'-04" E within the banks of an open ditch, 615.17' to a point;
13. N 54°-56'-41" E within the banks of an open ditch, 24.44' to a point;
14. N 82°-28'-22" E within the banks of an open ditch, 27.77' to a point;
15. S 57°-54'-48" E within the banks of an open ditch, 70.43' to a point;
16. S 42°-48'-55" E within the banks of an open ditch, 140.62' to a point;
17. S 33°-55'-53" E within the banks of an open ditch, 240.69' to a point;
18. S 00°-52'-01" E within the banks of an open ditch, 392.62' to a point;
19. S 20°-51'-05" E within the banks of an open ditch, 98.48' to a point;

20. N 89°-25'-24" W with said fractional section line, 175.20' to a set #5 Rebar, passing a set #5 Rebar at 20.00';
21. N 00°-34'-38" E, 619.34' to a set #5 Rebar;
22. N 33°-55'-53" W, 53.71' to a set #5 Rebar;
23. N 42°-48'-55" W, 134.31' to a set #5 Rebar;
24. N 80°-52'-25" W, 79.96' to a set #5 Rebar;
25. N 87°-51'-04" W, 374.84' to a set #5 Rebar;
26. S 00°-34'-38" W, 447.41' to a set #5 Rebar;
27. N 89°-25'-22" W, 337.98' to a set #5 Rebar;
28. N 00°-34'-38" E, 295.31' to a set #5 Rebar;
29. N 89°-25'-22" W, 1061.05' to the POINT OF BEGINNING, passing a set #5 Rebar at 1036.05'.

The above described parcel contains 14.654 acres, more or less, of which 0.192 acres are occupied by road right-of-way, subject to all legal highways and easements of record.

The system of bearings for this legal description is based on the Ohio State Plane-North Coordinate System NAD83 (2011). This legal description and accompanying plat represent an actual boundary survey completed under the direct supervision of Kyle J. Binkley, P.S. #8587 on November 25, 2016. All markers called for above are in place.



A handwritten signature in black ink, appearing to read "K. Binkley", positioned to the right of the professional seal.

Parcel "B"
LEGAL DESCRIPTION

Being a part of Parcel #B05-331-008-01 (Prior Deed Referenced in O.R. 564, Pg. 1582) and being a part of the S ½ of the SW ¼ of Section 33, Town 4 South, Range 6 East and a part of Parcel #B05-004-001-00 and being a part of the NW ¼ of Section 4, Town 5 South, Range 6 East, Duchouquet Township, Auglaize County, Ohio, more particularly described as follows:

Beginning at a Railroad Spike set at the SW corner of Section 33; thence the following courses:

1. N 00°-51'-42" E with the W line of the SW ¼ of Section 33 (centerline of Wapakoneta-Cridersville Road), 136.28' to a set Mag Nail;
2. S 89°-25'-22" E, 1061.05' to a set #5 Rebar, passing a #5 Rebar set at 25.00';
3. S 00°-34'-38" W, 295.31' to a set #5 Rebar;
4. S 89°-25'-22" E, 337.98' to a set #5 Rebar;
5. N 00°-34'-38" E, 447.41' to a set #5 Rebar;
6. S 87°-51'-04" E, 374.84' to a set #5 Rebar;
7. S 80°-52'-25" E, 79.96' to a set #5 Rebar;
8. S 42°-48'-55" E, 134.31' to a set #5 Rebar;
9. S 33°-55'-53" E, 53.71' to a set #5 Rebar;
10. S 00°-34'-38" W, 619.34' to a set #5 Rebar;
11. N 89°-25'-24" W, 1759.17' to an existing #5 Rebar;
12. N 00°-36'-01" E, 495.00' to an existing #5 Rebar;
13. N 89°-25'-24" W, 217.20' to the POINT OF BEGINNING, passing a set #5 Rebar at 177.68 and passing an existing Monument Box at the NW corner of Section 4 at 202.68'.

The above described parcel contains 25.569 acres, more or less, of which 0.078 acres are occupied by road right-of-way, subject to all legal highways and easements of record.

The system of bearings for this legal description is based on the Ohio State Plane-North Coordinate System NAD83 (2011). This legal description and accompanying plat represent an actual boundary survey completed under the direct supervision of Kyle J. Binkley, P.S. #8587 on November 25, 2016. All markers called for above are in place.



A handwritten signature in black ink, appearing to read "K. Binkley", written over a horizontal line.