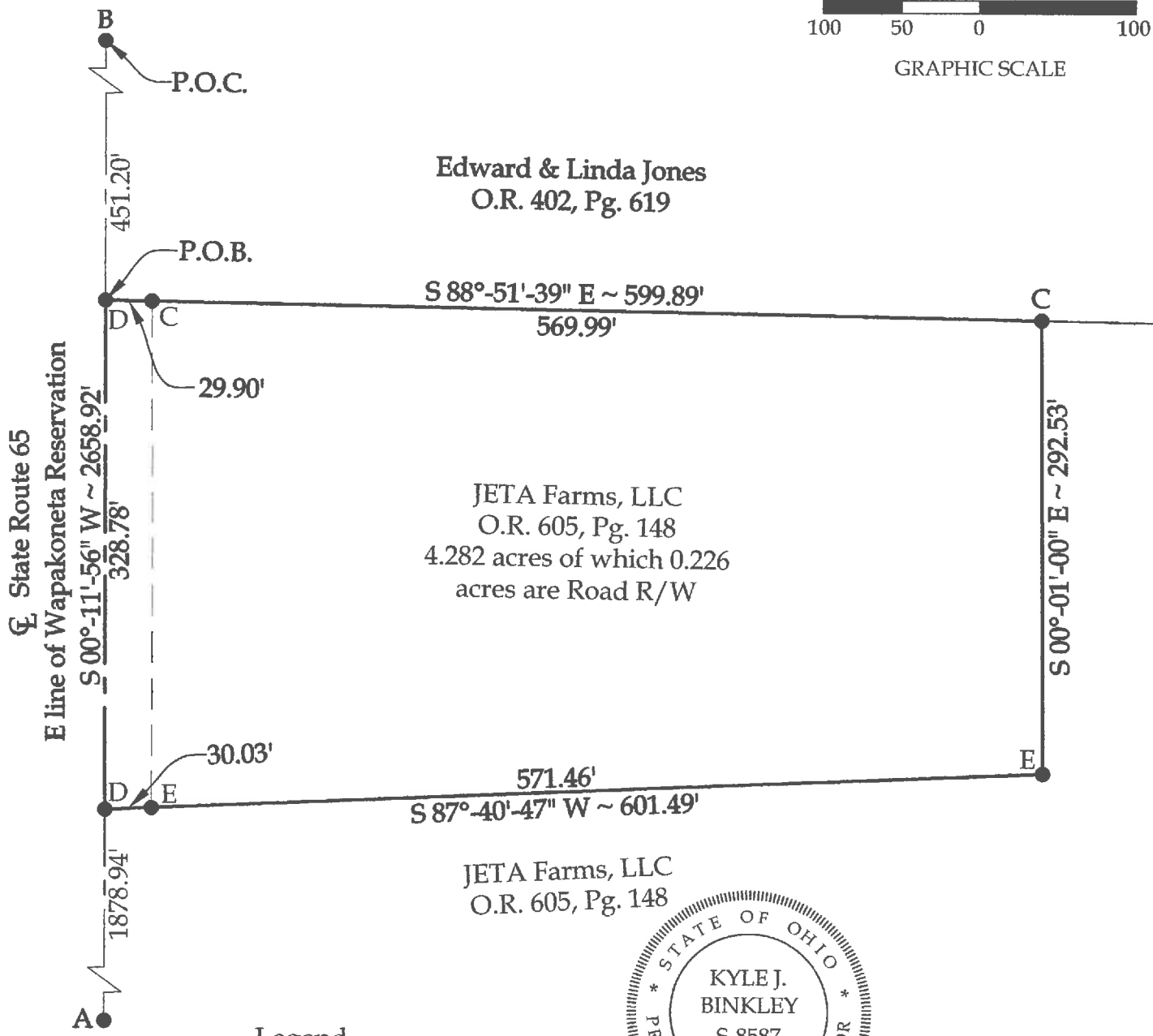


Survey of part of Parcel #A03-015-015-00 and being a part of
the NW 1/4 of Section 15, Town 6 South, Range 7 East, Clay
Township, Auglaize County, Ohio.
(Prior Deed Referenced in O.R. 605, Pg. 148)



SCALE: 1" = 100'



Legend

- A = Existing Mag Spike on the S line of the NW 1/4 of Section 15 (intersection of Gutman Road and State Route 65)
- B = Existing Mag Spike on the N line of Section 15 (centerline of State Route 65)
- C = Existing #5 Rebar
- D = Set Mag Nail
- E = Set #5 Rebar

Note:
All distances shown are measured unless otherwise noted.

This plat is recorded in Survey Book "S", Pages 616, in the Auglaize County Engineer's Office.

BASIS OF BEARINGS: The bearings on this plat are based on the Ohio State Plane - North Coordinate System NAD83 (2011).



This plat and the accompanying legal description represent an actual boundary survey completed under my direct supervision on December 22, 2016.

Kyle J. Binkley, P.S. #8587

Binkley
LAND SURVEYING, LLC

121 W. Auglaize Street
Wapakoneta, Ohio 45895
(419) 236-3768

CLIENT: JETA Farms, LLC			
SURVEYED BY: K.J.B.	DATE: 12-22-2016	DRAWN BY: K.J.B.	CHECKED BY: K.J.B.
SCALE: 1" = 100'		PAGE 1	OF 2 PAGES

LEGAL DESCRIPTION

Being a part of Parcel #A03-015-015-00 (Prior Deed Referenced in O.R. 605, Pg. 148) and being a part of the NW ¼ of Section 15, Town 6 South, Range 7 East, Clay Township, Auglaize County, Ohio, more particularly described as follows:

Beginning at an existing Mag Spike on the N line of the NW ¼ of Section 15 (centerline of State Route 65); thence S 00°-11'-56" W with the East line of the Wapakoneta Reservation (centerline of State Route 65), 451.20' to a Mag Nail set at the POINT OF BEGINNING; thence the following courses:

- 1. S 88°-51'-39" E, 599.89' to an existing #5 Rebar, passing an existing #5 Rebar at 29.90';
- 2. S 00°-01'-00" E, 292.53' to a set #5 Rebar;
- 3. S 87°-40'-47" W, 601.49' to a Mag Nail set on the E line of the Wapakoneta Reservation (centerline of State Route 65), passing a #5 Rebar set at 571.46';
- 4. N 00°-11'-56" E with said reservation line, 328.78' to the POINT OF BEGINNING.

The above described parcel contains 4.282 acres, more or less, of which 0.226 acres are occupied by road right-of-way, subject to all legal highways and easements of record.

The system of bearings for this legal description is based on the Ohio State Plane-North Coordinate System NAD83 (2011). This legal description and accompanying plat represent an actual boundary survey completed under the direct supervision of Kyle J. Binkley, P.S. #8587 on December 22, 2016. All markers called for above are in place.



A handwritten signature in black ink, appearing to read "K. Binkley", written over a horizontal line.