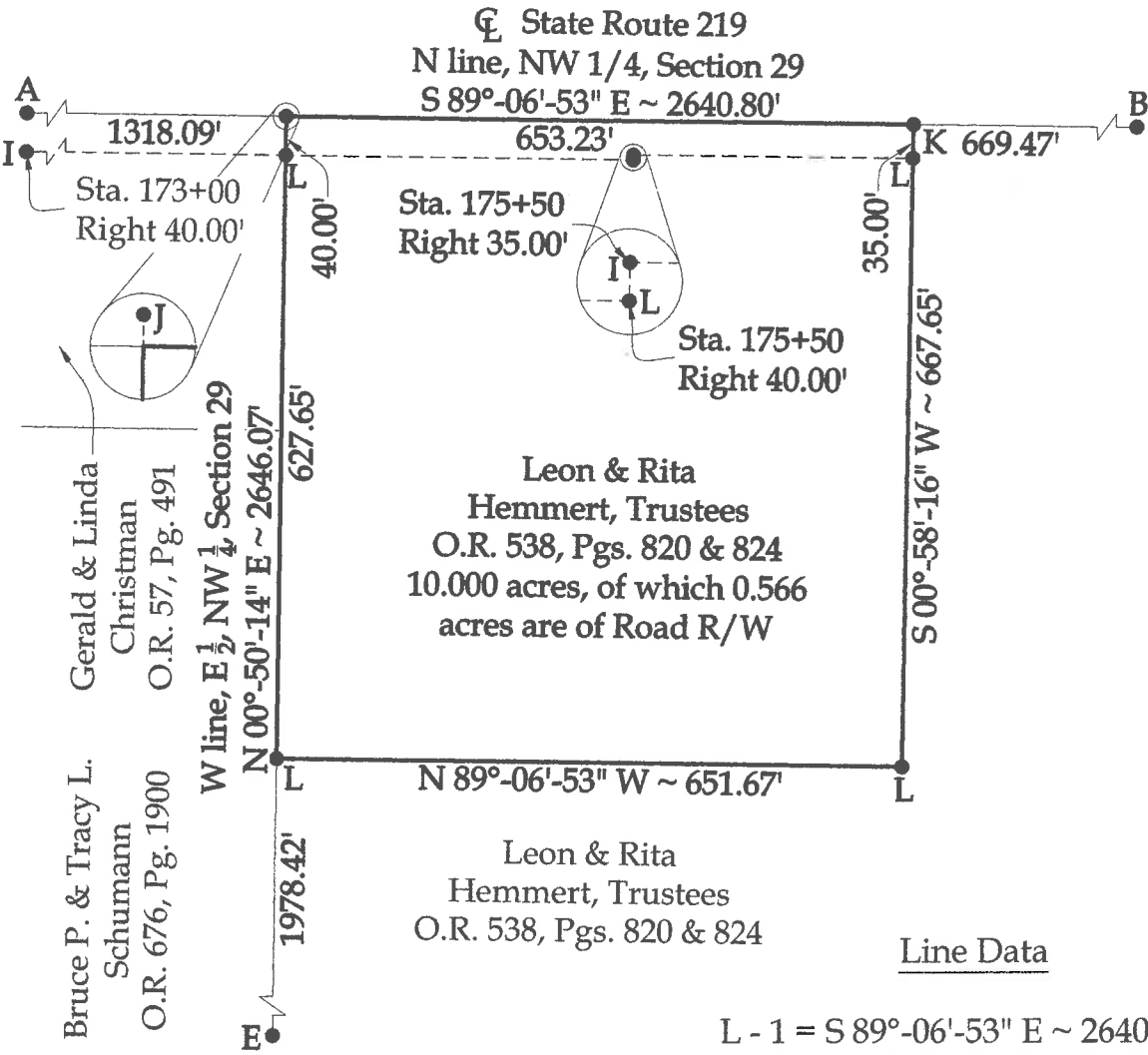
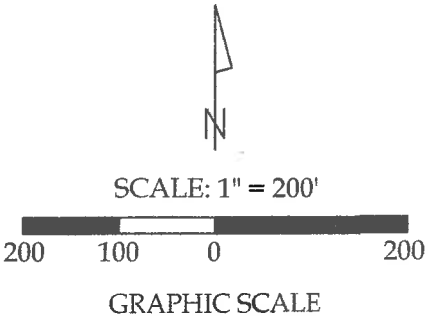
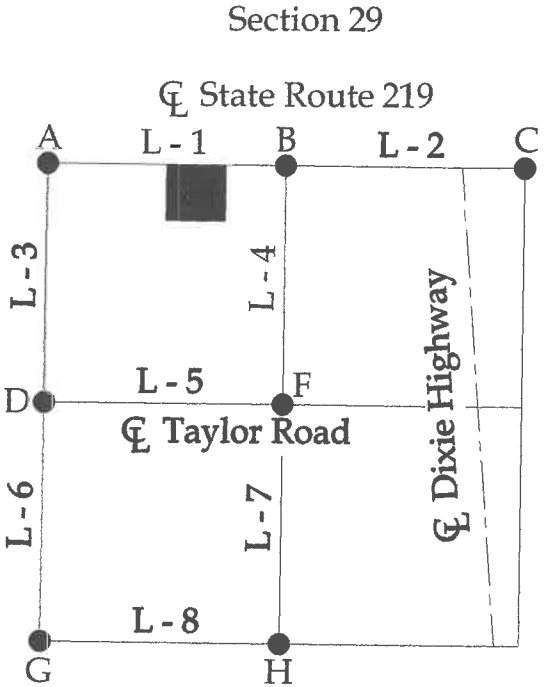


Survey of part of Parcel #I24-029-002-00 and being a part of the E 1/2 of the NW 1/4 of Section 29, Town 6 South, Range 6 East, Pusheta Township, Auglaize County, Ohio.
(Prior Deed Referenced in O.R. 538, Pgs. 820 & 824)



Legend

- A = Railroad Spike set at the NW corner of Section 29
- B = Railroad Spike set at the NE corner of the NW 1/4 of Section 29
- C = Existing Monument Box at the NE corner of Section 29
- D = Existing Monument Box at the SW corner of the NW 1/4 of Section 29
- E = Existing Railroad Spike at the SW corner of the E 1/2 of the NW 1/4 of Section 29
- F = Railroad Spike set at the SE corner of the NW 1/4 of Section 29
- G = Existing Monument Box at the SW corner of Section 29
- H = Existing Monument Box at the SE corner of the SW 1/4 of Section 29
- I = Existing ODOT Concrete Monument
- J = Existing Railroad Spike
- K = Set Mag Nail
- L = Set #5 Rebar



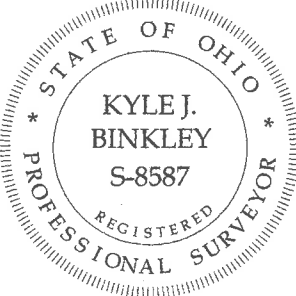
Line Data

- L - 1 = S 89°-06'-53" E ~ 2640.80'
- L - 2 = S 88°-59'-33" E ~ 2643.82'
- L - 3 = N 00°-59'-16" E ~ 2646.03'
- L - 4 = S 00°-50'-26" W ~ 2645.99'
- L - 5 = N 89°-06'-56" W ~ 2647.59'
- L - 6 = N 01°-04'-26" E ~ 2651.78'
- L - 7 = S 00°-56'-45" W ~ 2652.70'
- L - 8 = N 89°-05'-43" W ~ 2653.51'

NOTE : All distances on this plat are measured unless otherwise noted.

This plat is recorded in Survey Book "T", Page 12, in the Auglaize County Engineer's Office.

BASIS OF BEARINGS : The system of bearings for this plat and legal description is based on the Ohio State Plane - North Coordinate System NAD83 (2011).



This plat and the accompanying legal description represent an actual boundary survey completed under my direct supervision on June 06, 2017.

Kyle J. Binkley, P.S. #8587

121 W. Auglaize Street
Wapakoneta, Ohio 45895
(419) 236-3768

CLIENT: Leon Hemmert			
SURVEYED BY: T.E.W./E.R.D.	DATE: 06-30-2017	DRAWN BY: K.J.B.	CHECKED BY: K.J.B.
SCALE: 1" = 200'		PAGE 1	OF 2 PAGES

LEGAL DESCRIPTION

Being a part of Parcel #124-029-002-00 (Prior Deed Referenced in O.R. 538, Pgs. 820 & 824) and being a part of the E ½ of the NW ¼ of Section 29, Town 6 South, Range 6 East, Pusheta Township, Auglaize County, Ohio, more particularly described as follows:

Beginning at the NW corner of the E ½ of the NW ¼ of Section 29, as referenced by an existing Railroad Spike at N 00°-50'-14" E, 0.29'; thence the following courses:

1. S 89°-06'-53" E with the N line of the E ½ of Section 29 (centerline of State Route 219), 653.23' to set Mag Nail;
2. S 00°-58'-16" W, 667.65' to a set #5 Rebar, passing a #5 Rebar set at 35.00';
3. N 89°-06'-53" W, 651.67' to a #5 Rebar set on the W line of the E ½ of the NW ¼ of Section 29;
4. N 00°-50'-14" E with said fractional section line, 667.65' to the POINT OF BEGINNING, passing a #5 Rebar set at 627.65'.

The above described parcel contains 10.000 acres, more or less, of which 0.566 acres are occupied by road right-of-way, subject to all legal highways and easements of record.

The system of bearings for this legal description is based on the Ohio State Plane-North Coordinate System NAD83 (2011). This legal description and accompanying plat represent an actual boundary survey completed under the direct supervision of Kyle J. Binkley, P.S. #8587 on June 30, 2017. All markers called for above are in place.



A handwritten signature in black ink, appearing to read "K. Binkley", positioned to the right of the professional seal.