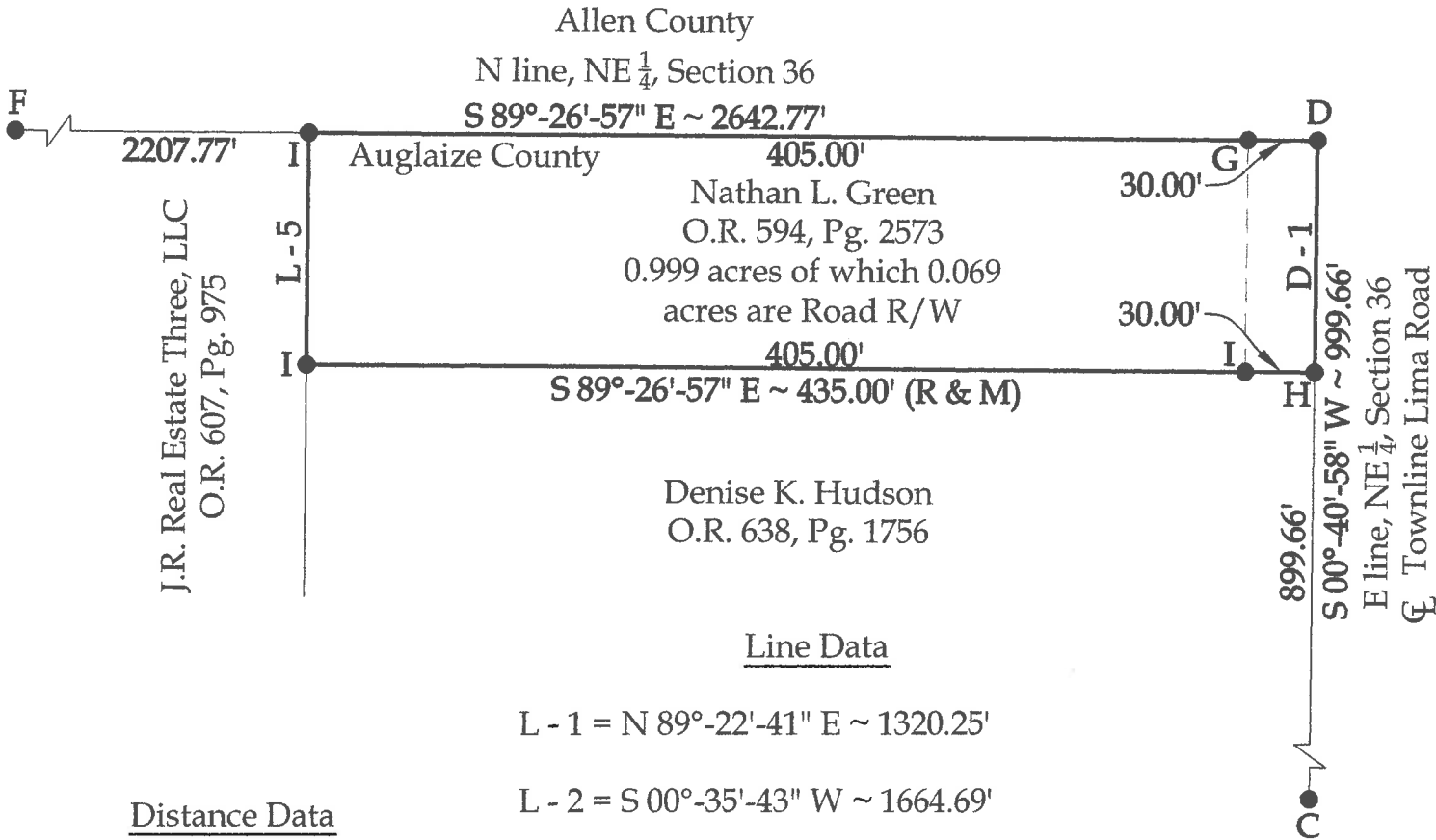
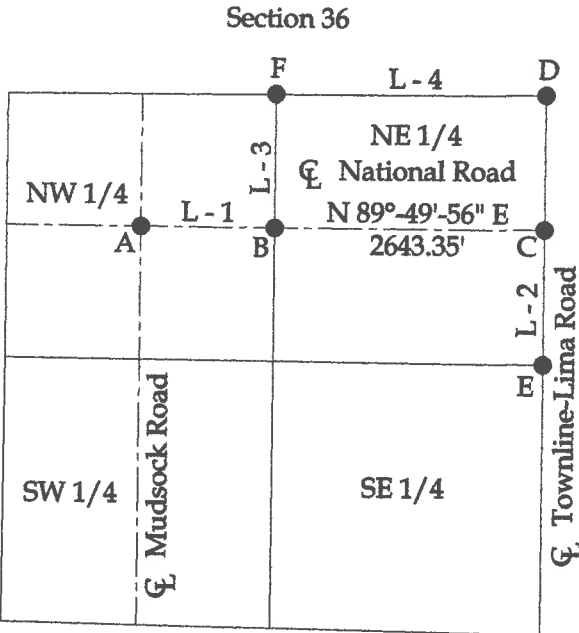
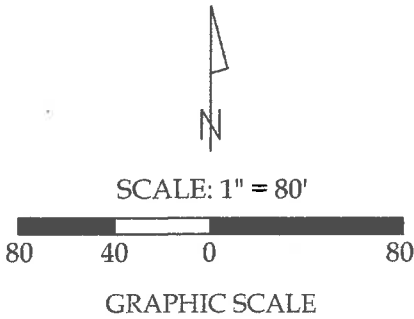


Survey of Parcel #B05-036-025-00 and being a part of the NE 1/4 of
Section 36, Town 4 South, Range 6 East, Duchouquet Township,
Auglaize County, Ohio.
(Deed Referenced in O.R. 594, Pg. 2573)



Legend

- A = Existing Monument Box at the intersection of the centerlines of National Road and Mudsock Road
- B = Existing Mag Nail at the intersection of the centerline of National Road and the W line of the NE 1/4 of Section 36
- C = Existing Monument Box at the intersection of the centerline of National Road and the E line of the NE 1/4 of Section 36
- D = Existing Monument Box at the NE corner of Section 36
- E = Existing Monument Box at the SE corner of the NE 1/4 of Section 36
- F = NW corner of the NE 1/4 of Section 36 as re-established based on Survey D-187 of the Auglaize County Tax Map Office
- G = Existing #5 Rebar
- H = Set Mag Nail
- I = Set #5 Rebar



This plat represents an actual boundary survey completed under my direct supervision on August 30, 2017.

Kyle J. Binkley
Kyle J. Binkley, P.S. #8587

121 W. Auglaize Street Wapakoneta, Ohio 45895 (419) 236-3768			
CLIENT: Nathan L. Green			
SURVEYED BY: K.J.B.	DATE: 08-30-2017	DRAWN BY: K.J.B.	CHECKED BY: K.J.B.
SCALE: 1" = 80'	PAGE 1	OF 1	PAGES 1

NOTE : All distances on this plat are measured unless otherwise noted.

BASIS OF BEARINGS : The system of bearings for this plat and legal description is based on the Ohio State Plane - North Coordinate System NAD83 (2011).

This plat is recorded in Survey Book "T", Page 53, in the Auglaize County Engineer's Office.