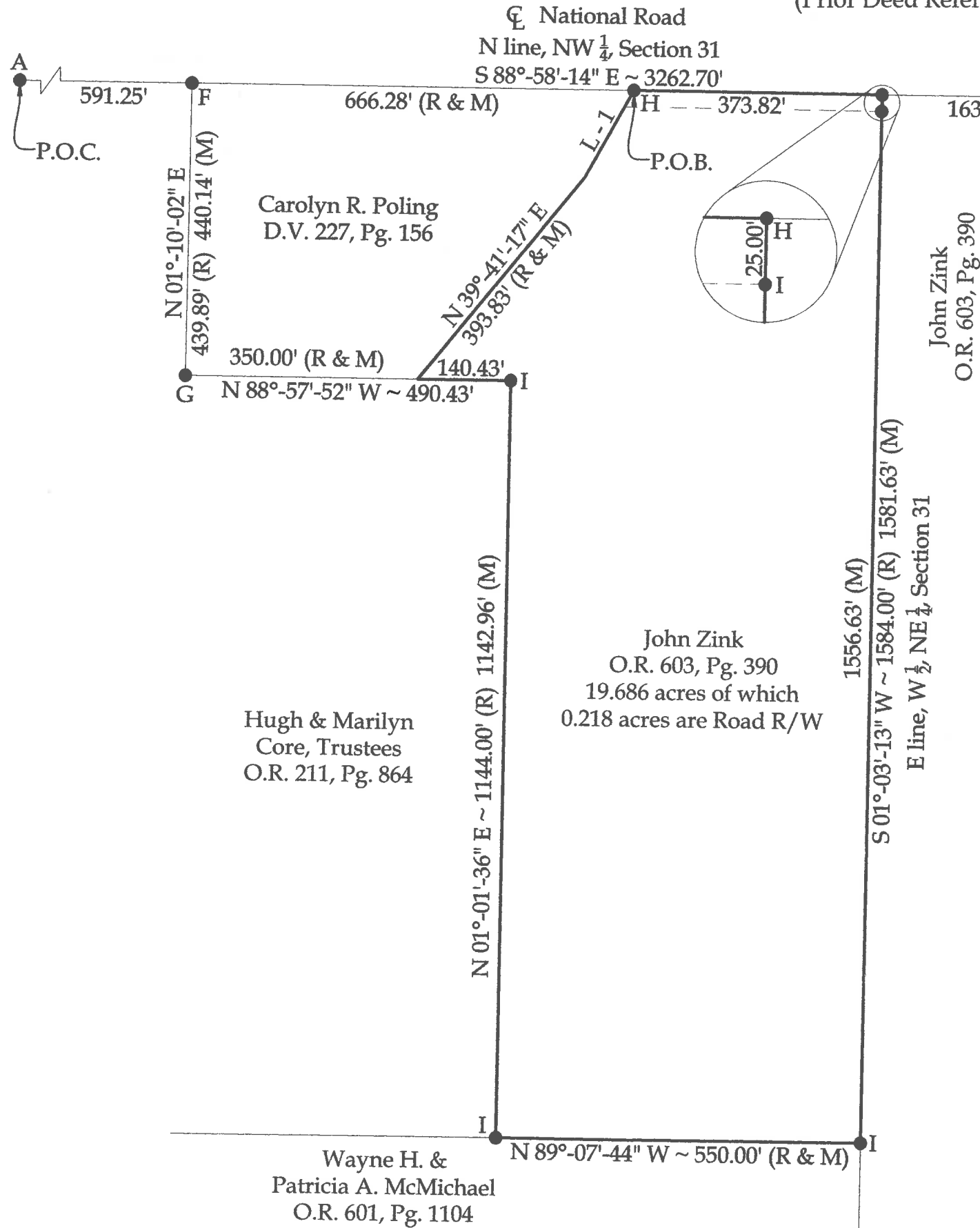


Survey of Parcel #F17-031-002-00 and being a part of the W 1/2 of the NW 1/4 of Section 31, Town 4 South, Range 5 East, Logan Township, Auglaize County, Ohio.

(Prior Deed Referenced in O.R. 603, Pg. 390)



Legend

- A = Existing Monument Box at the NW corner of Section 31
- B = Existing Monument Box at the NE corner of the NW 1/4 of Section 31
- C = Existing #5 Rebar at the SE corner of the NW 1/4 of Section 31
- D = Existing 1" Rebar at the SE corner of the W 1/2 of the NW 1/4 of Section 31
- E = Existing #5 Rebar at the SW corner of the NW 1/4 of Section 31
- F = Existing Railroad Spike
- G = Existing #5 Rebar
- H = Set Mag Spike
- I = Set #5 Rebar



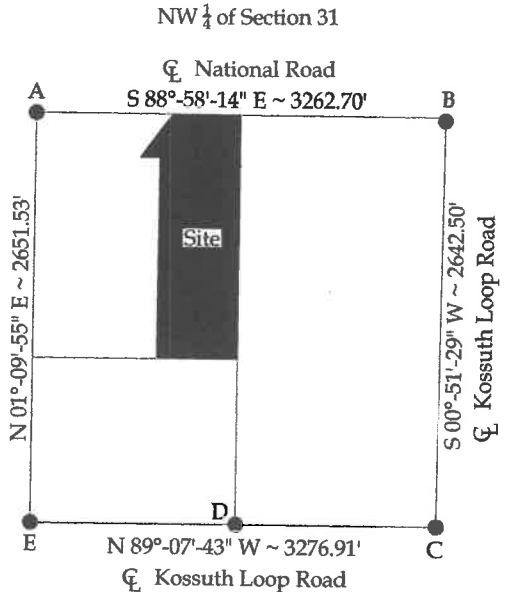
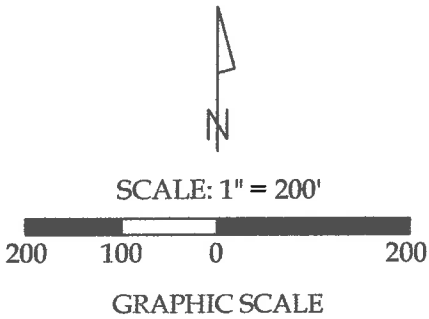
Line Data

L - 1 = N 29°-17'-46" E ~ 150.60' (R & M)

NOTE: All distances on this plat are measured unless otherwise noted.

This plat is recorded in Survey Book "T", Page 201, in the Auglaize County Engineer's Office.

BASIS OF BEARINGS: The system of bearings for this plat and legal description is based on the Ohio State Plane - North Coordinate System NAD83 (2011).



This plat and the accompanying legal description represent an actual boundary survey completed under my direct supervision on January 25, 2018.

Kyle J. Binkley, P.S. #8587

121 W. Auglaize Street
Wapakoneta, Ohio 45895
(419) 236-3768

CLIENT: John Zink			
SURVEYED BY: K.J.B./T.E.W.	DATE: 01-25-2018	DRAWN BY: K.J.B.	CHECKED BY: K.J.B.
SCALE: 1" = 200'	PAGE 1	OF 2	PAGES 2

LEGAL DESCRIPTION

Being Parcel #F17-031-002-00 (Prior Deed Referenced in O.R. 603, Pg. 390) and being a part of the W $\frac{1}{2}$ of the NW $\frac{1}{4}$ of Section 31, Town 4 South, Range 5 East, Logan Township, Auglaize County, Ohio, more particularly described as follows:

Beginning at an existing Monument Box at the NW corner of Section 31; thence S 88°-58'-14" E with the N line of the NW $\frac{1}{4}$ of Section 31 (centerline of National Road), 1257.53' to a Mag Spike set at the POINT OF BEGINNING; thence the following courses:

1. Continuing S 88°-58'-14" E with said fractional section line, 373.82' to a Mag Spike set at the NE corner of the W $\frac{1}{2}$ of the NW $\frac{1}{4}$ of Section 31;
2. S 01°-03'-13" W with the E line of the W $\frac{1}{2}$ of the NW $\frac{1}{4}$ of Section 31, 1581.63' to a set #5 Rebar;
3. N 89°-07'-44" W, 550.00' to a set #5 Rebar;
4. N 01°-01'-36" E, 1142.96' to a set #5 Rebar;
5. N 88°-57'-52" W, 140.43' to a point within the banks of an open ditch;
6. N 39°-41'-17" E, 393.83' to a point within the banks of an open ditch;
7. N 29°-17'-46" E, 150.60' to the POINT OF BEGINNING.

The above described parcel contains 19.686 acres, more or less, of which 0.218 acres are occupied by road right-of-way, subject to all legal highways and easements of record.

The system of bearings for this legal description is based on the Ohio State Plane-North Coordinate System NAD83 (2011). This legal description and accompanying plat represent an actual boundary survey completed under the direct supervision of Kyle J. Binkley, P.S. #8587 on January 25, 2018. All markers called for above are in place.



A handwritten signature in black ink, appearing to read "K. Binkley", written over a horizontal line.