

Survey of part of Parcel #B05-351-006-00 and being a part of the NE 1/4, SE 1/4 of Section 35, Town 5 South, Range 6 East, Duchouquet Township, Auglaize County, Ohio.  
(Prior Deed Referenced in O.R. 677, Pg. 611)



SCALE: 1" = 200'



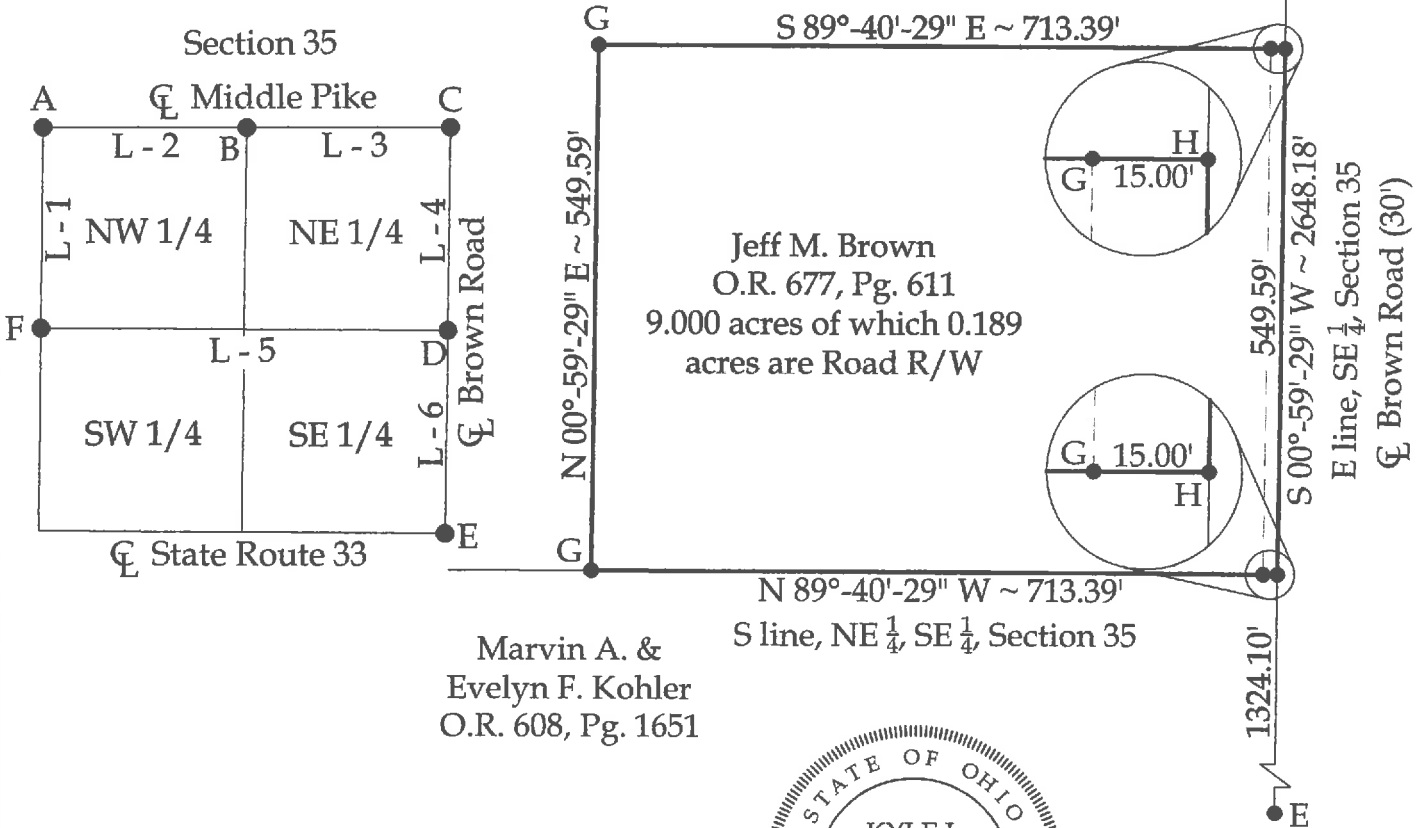
GRAPHIC SCALE

Line Data

- L - 1 = N 00°-49'-28" E ~ 2637.22'
- L - 2 = S 89°-56'-26" E ~ 2649.77'
- L - 3 = N 89°-51'-51" E ~ 2650.28'
- L - 4 = S 00°-52'-24" W ~ 2666.13'
- L - 5 = N 89°-43'-33" W ~ 5297.42'
- L - 6 = S 00°-59'-29" W ~ 2648.18'

Note:  
All distances shown are measured unless otherwise noted.

Jeff M. Brown  
O.R. 677, Pg. 611



Legend

- A = Existing Monument Box at the NW corner of Section 35
- B = Existing Monument Box at the NW corner of the NE 1/4 of Section 35
- C = Existing Monument Box at the NE corner of Section 35
- D = Existing Monument Box at the SE corner of the NE 1/4 of Section 35
- E = Mag Nail set at the SE corner of Section 35
- F = Existing Concrete Post as established based on Survey I-432 of the Auglaize County Tax Map Office
- G = Set #5 Rebar
- H = Set Mag Nail




This plat and the accompanying legal description represents an actual boundary survey completed under my direct supervision on March 26, 2018.

  
Kyle J. Binkley, P.S. #8587

This plat is recorded in Survey Book "T", Page 238, in the Auglaize County Engineer's Office.

**BASIS OF BEARINGS:** The bearings on this plat are based on the Ohio State Plane - North Coordinate System NAD83 (2011).

 121 W. Auglaize Street Wapakoneta, Ohio 45895 (419) 236-3768			
CLIENT: Justin Brown			
SURVEYED BY: K.J.B.	DATE: 03-26-2018	DRAWN BY: K.J.B.	CHECKED BY: K.J.B.
SCALE: 1" = 200'		PAGE 1	OF 2 PAGES

**LEGAL DESCRIPTION**

Being a part of Parcel #B05-351-006-00 (Prior Deed Referenced in O.R. 677, Pg. 611) and being a part of the NE ¼ of the SE ¼ of Section 35, Town 5 South, Range 6 East, Duchouquet Township, Auglaize County, Ohio, more particularly described as follows:

Commencing at an existing Monument Box at the NE corner of the SE ¼ of Section 35; thence S 00°-59'-29" W with the E line of the SE ¼ of Section 35 (centerline of Brown Road), 774.49' to a Mag Nail set at the POINT OF BEGINNING; thence the following courses:

1. Continuing S 00°-59'-29" W with said fractional section line, 549.59' to a Mag Nail set at the SE corner of the NE ¼ of the SE ¼ of Section 35;
2. N 89°-40'-29" W with the S line of the NE ¼ of the SE ¼ of Section 35, 713.39' to a set #5 Rebar;
3. N 00°-59'-29" E, 549.59' to a set #5 Rebar;
4. S 89°-40'-29" E, 713.39' to the POINT OF BEGINNING.

The above described parcel contains 9.000 acres, more or less, of which 0.189 acres are occupied by road right-of-way, subject to all legal highways and easements of record.

The system of bearings for this legal description is based on the Ohio State Plane-North Coordinate System NAD83 (2011). This legal description and accompanying plat represent an actual boundary survey completed under the direct supervision of Kyle J. Binkley, P.S. #8587 on March 26, 2018. All markers called for above are in place.



A handwritten signature in black ink, appearing to read "K. Binkley", written over a horizontal line.