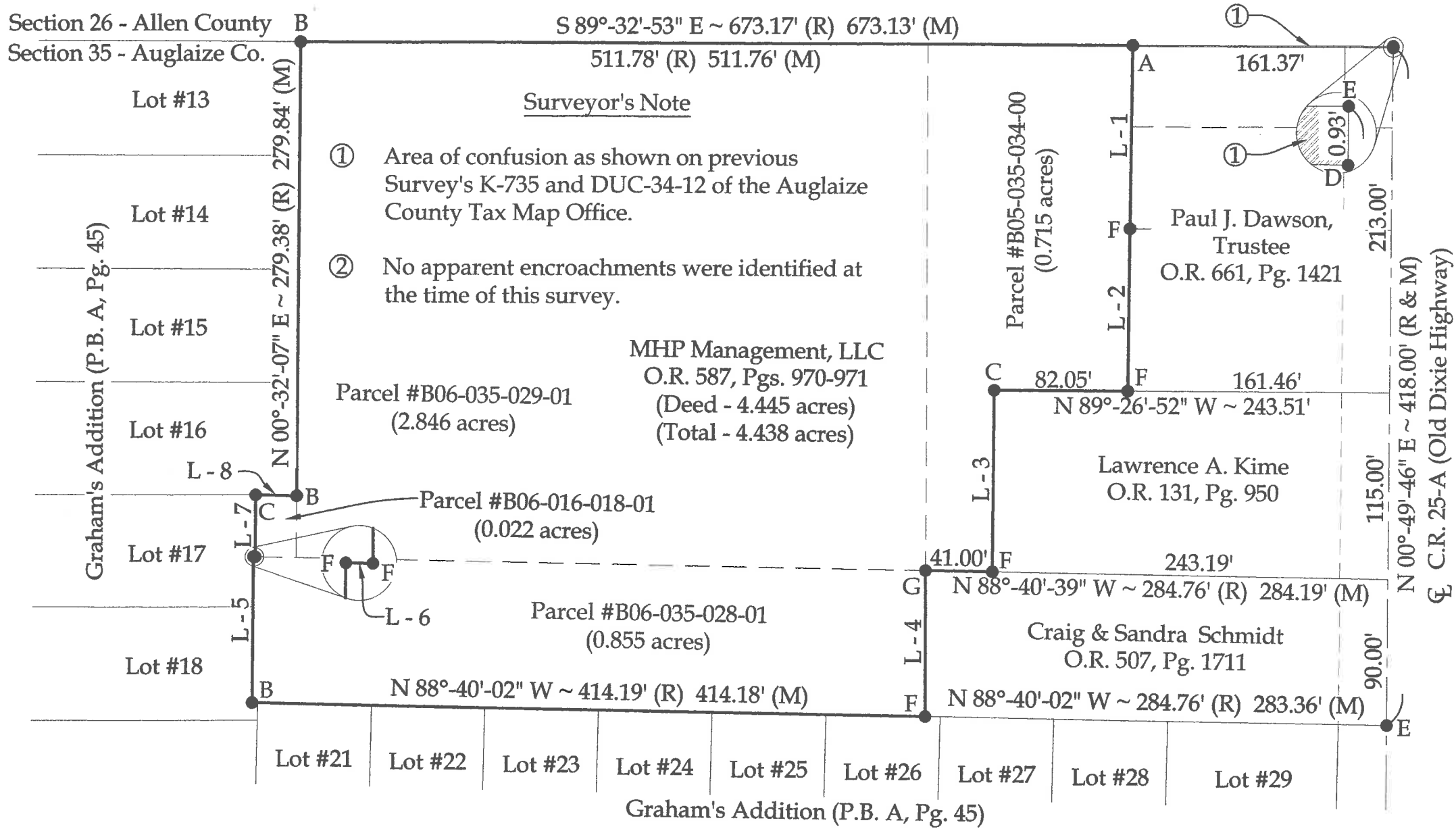
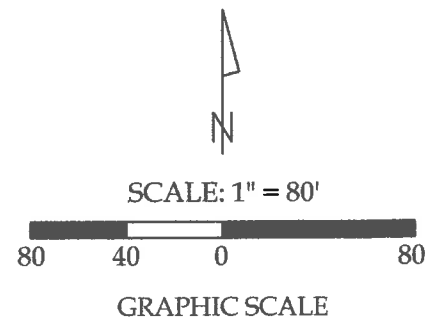


Survey of Parcels #B06-035-029-01, B06-035-028-01, B06-016-018-01 & B05-035-034-00 and being a part of the NE 1/4 and NW 1/4 of Section 35, Town 4 South, Range 6 East, Duchouquet Township, Auglaize County, Ohio.
(Deed Referenced in O.R. 587, Pgs. 970-971)



NOTE : All distances on this plat are measured unless otherwise noted.

This plat is recorded in Survey Book "T", Page 395, in the Auglaize County Engineer's Office.

BASIS OF BEARINGS : The system of bearings for this plat and legal description is based on the Ohio State Plane - North Coordinate System NAD83 (2011).



This plat represents an actual boundary survey completed under my direct supervision on August 13, 2018.

Kyle J. Binkley
Kyle J. Binkley, P.S. #8587

Binkley
LAND SURVEYING, LLC
121 W. Auglaize Street
Wapakoneta, Ohio 45895
(419) 236-3768

CLIENT: MHP Management, LLC			
SURVEYED BY: T.E.W./T.J.S.	DATE: 08-13-2018	DRAWN BY: K.J.B.	CHECKED BY: K.J.B.
SCALE: 1" = 80'		PAGE 1	OF 1