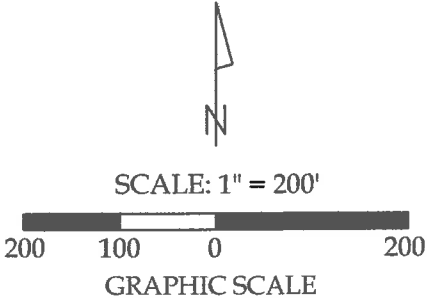


Survey of Part of Parcel #L34-271-008-00 and being a part of the E 1/2 of the NW 1/4 and a part of the NE 1/4 of the SW 1/4 of Section 27, Town 5 South, Range 7 East, Union Township, Auglaize County, Ohio.
(Prior Deed Referenced in O.R. 60, Pg. 919)



Legend

- A = Existing Monument Box at the NW corner of the E 1/2 of the NW 1/4 of Section 27
- B = Existing Mag Nail at the NE corner of the NW 1/4 of Section 27
- C = Existing Monument Box at the SW corner of the E 1/2 of the NW 1/4 of Section 27
- D = #5 Rebar set in the base of a rotted Wood Corner Post at the SE corner of the NW 1/4 of Section 27
- E = Existing Railroad Spike
- F = Set #5 Rebar

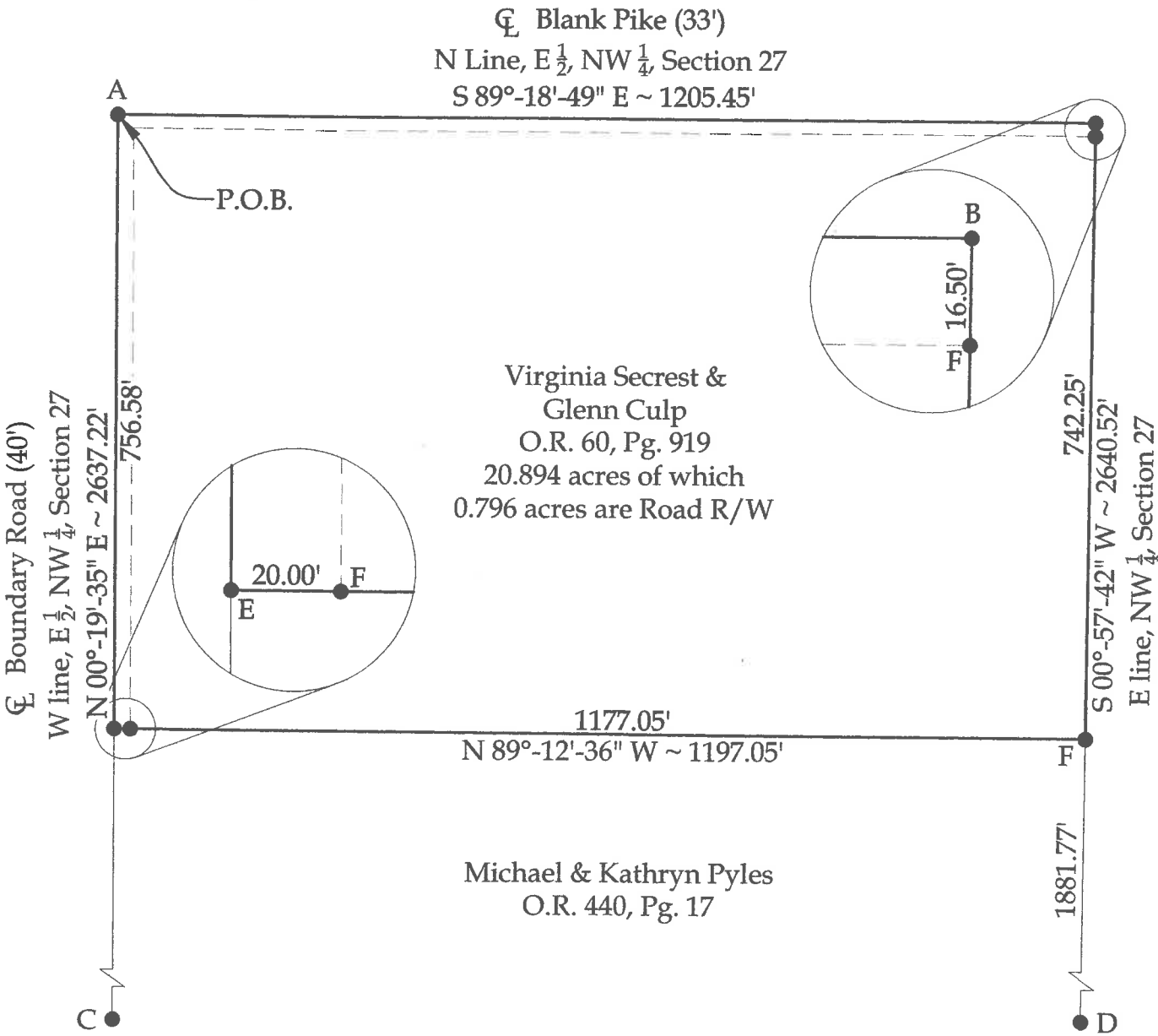


This plat and the accompanying legal description represents an actual boundary survey completed under my direct supervision on September 13, 2018.

[Signature]
Kyle J. Binkley, P.S. #8587

Binkley
LAND SURVEYING, LLC
121 W. Auglaize Street
Wapakoneta, Ohio 45895
(419) 236-3768

CLIENT: Glen Culp			
SURVEYED BY: T.J.S./T.E.W.	DATE: 09-13-2018	DRAWN BY: K.J.B.	CHECKED BY: K.J.B.
SCALE: 1" = 200'		PAGE 1	OF 2 PAGES



BASIS OF BEARINGS: The system of bearings for this plat and legal description is based on the Ohio State Plane - North Coordinate System NAD 83 (2011).

This plat is recorded in Survey Book "T", Page 419, in the Auglaize County Engineer's Office.

NOTE: All distances on this plat are measured unless otherwise noted.

LEGAL DESCRIPTION

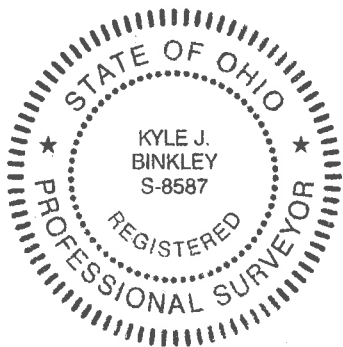
Being a part of Parcel #L34-271-008-00 and being a part of the E ½ of the NW ¼ of Section 27, Town 5 South, Range 7 East, Union Township, Auglaize County, Ohio (Prior Deed Referenced in O.R. 60, Pg. 919), more particularly described as follows:

Beginning at an existing Monument Box at the NW corner of the E ½ of the NW ¼ of Section 27; thence the following courses:

- 1. S 89°-18'-49" E with the N line of the E ½ of the NW ¼ of Section 27 (centerline of Blank Pike), 1205.45' to an existing Mag Nail at the NE corner of the NW ¼ of Section 27;
- 2. S 00°-57'-42" W, 758.75' to a set #5 Rebar, passing a set #5 Rebar at 16.50';
- 3. N 89°-12'-36" W, 1197.05' to an existing Railroad Spike on the W line of the E ½ of the NW ¼ of Section 27 (centerline of Boundary Road), passing a #5 Rebar set at 1177.05';
- 4. N 00°-19'-35" E, 756.58' to the POINT OF BEGINNING.

The above described parcel contains 20.894 acres, more or less, of which 0.796 acres are occupied by road right-of-way, subject to all legal highways and easements of record.

The system of bearings for this legal description is based on the Ohio State Plane-North Coordinate System NAD83 (2011). This legal description and accompanying plat represent an actual boundary survey completed under the direct supervision of Kyle J. Binkley, P.S. #8587 on September 13, 2018. All markers called for above are in place.



A handwritten signature in black ink, appearing to read "K. Binkley", written over a horizontal line.