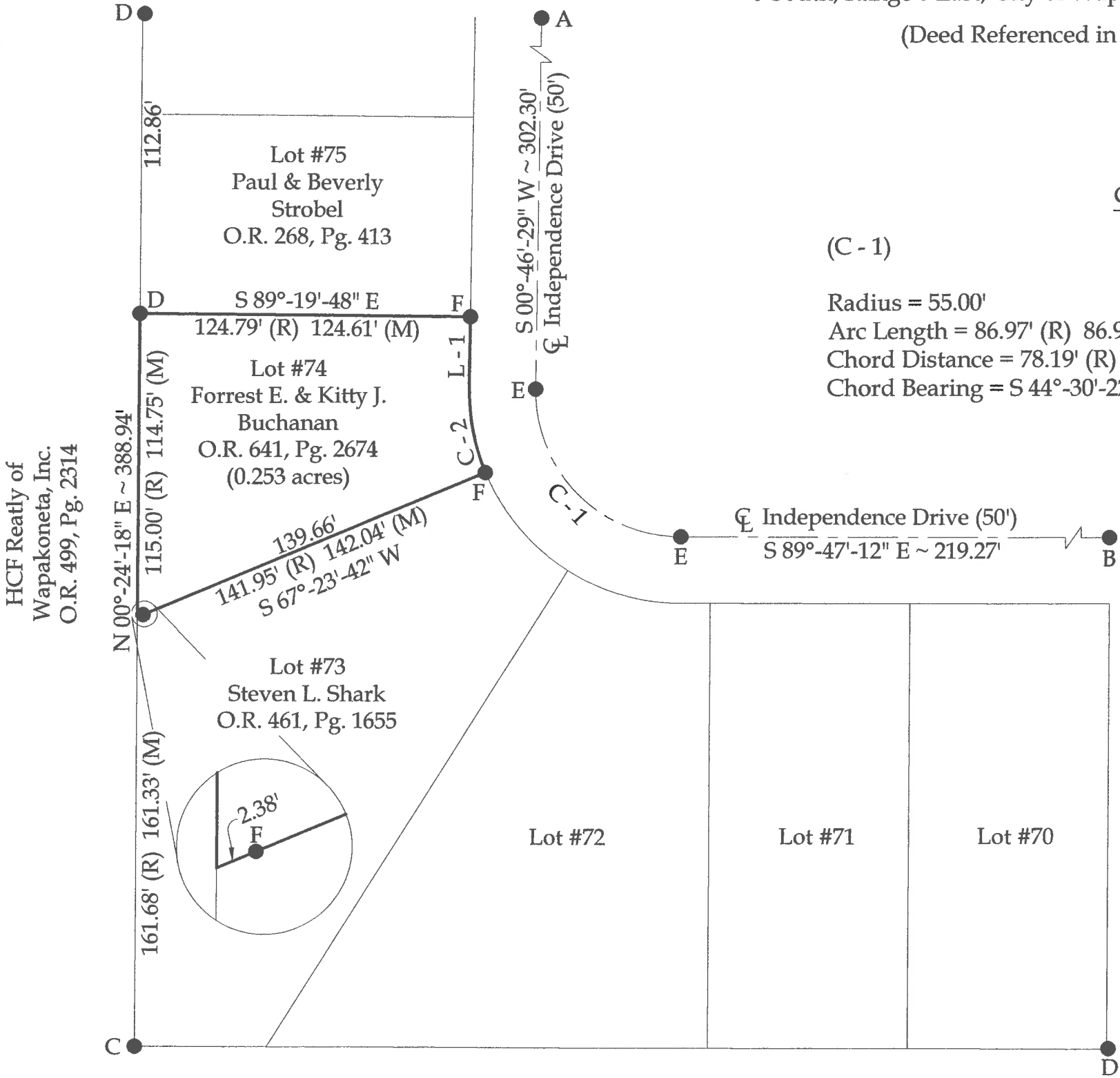
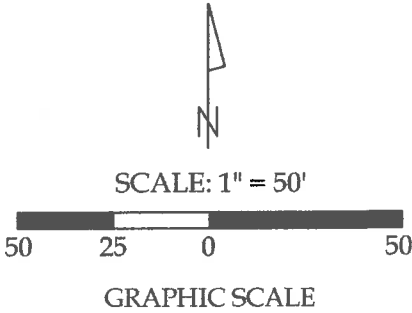


Survey of Parcels #B07-092-074-00 and being Lot #74 of Bramblewood Estates (P.C. A, Pg. 37) and being located in the NW 1/4 of Section 29, Town 5 South, Range 6 East, City of Wapakoneta, Auglaize County, Ohio.

(Deed Referenced in O.R. 641, Pg. 2674)



Curve Data

(C - 1)

Radius = 55.00'
Arc Length = 86.97' (R) 86.93' (M)
Chord Distance = 78.19' (R) 78.16' (M)
Chord Bearing = S 44°-30'-22" E

(C - 2)

Radius = 80.00'
Arc Length = 32.63' (R) 32.52' (M)
Chord Distance = 32.40' (R) 32.30' (M)
Chord Bearing = S 10°-51'-04" E

Line Data

L - 1 = S 00°-46'-29" W ~ 26.97' (R & M)

Legend

- A = Existing Railroad Spike at the Intersection of Cottonwood Drive & Independence Drive
- B = Existing Railroad Spike at the Intersection of Independence Drive & Murray Street
- C = Existing 1/2" Iron Pipe
- D = Existing #5 Rebar
- E = Set Mag Nail
- F = Set #5 Rebar



This plat and the accompanying legal description represent an actual boundary survey completed under my direct supervision on October 17, 2018.

Kyle J. Binkley, P.S. #8587

 121 W. Auglaize Street Wapakoneta, Ohio 45895 (419) 236-3768			
CLIENT: Forrest Buchanan			
SURVEYED BY: T.J.S./T.E.W.	DATE: 10-17-2018	DRAWN BY: K.J.B.	CHECKED BY: K.J.B.
SCALE: 1" = 50'		PAGE 1	OF 1

BASIS OF BEARINGS : The system of bearings for this plat and legal description is based on the Ohio State Plane - North Coordinate System NAD83 (2011).

This plat is recorded in Survey Book "T", Page 469, in the Auglaize County Engineer's Office.

NOTE : All distances on this plat are measured unless otherwise noted.