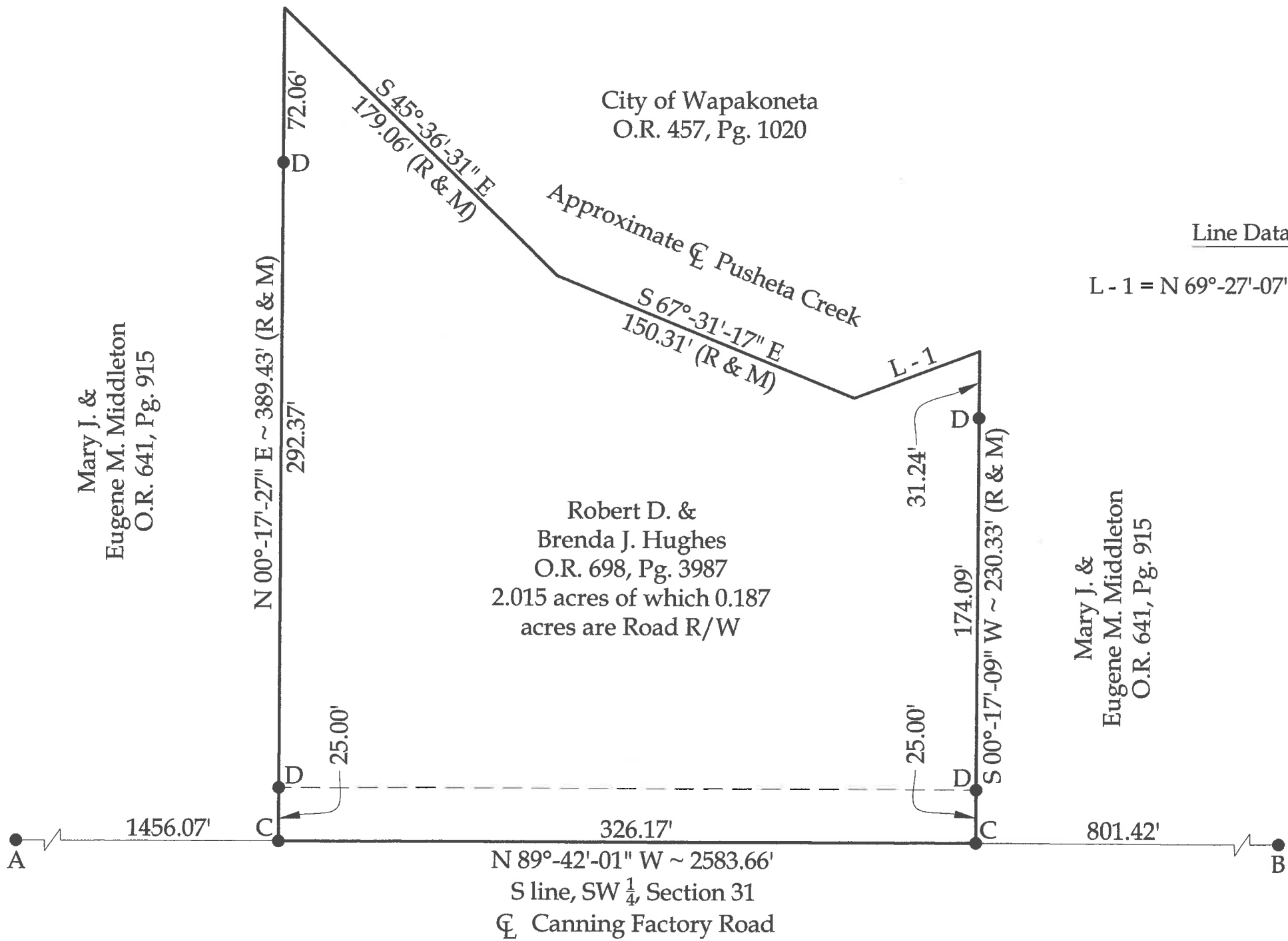
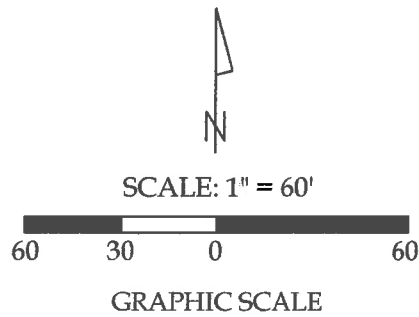


Survey of Parcel #B05-311-009-03 and being a part of the SW 1/4 of Section 31,
Town 5 South, Range 6 East, Duchouquet Township, Auglaize County, Ohio.
(Deed Referenced in O.R. 698, Pg. 3987)



Line Data

L - 1 = N 69°-27'-07" E ~ 62.47'

Legend

- A = Existing Monument Box at the SW corner of Section 31
- B = Existing Monument Box at the SE corner of the SW 1/4 of Section 31
- C = Set Mag Nail
- D = Set #5 Rebar



This plat represents an actual boundary survey completed under my direct supervision on July 16, 2019.

Kyle J. Binkley
Kyle J. Binkley, P.S. #8587

This plat is recorded in Survey Book "T", Page 677, in the Auglaize County Engineer's Office.

BASIS OF BEARINGS: The system of bearings for this plat and legal description is based on the Ohio State Plane - North Coordinate System NAD83 (2011).

Surveyor's Note: Re-established based on Survey DUC-31-29 of the Auglaize County Tax Map Office.

NOTE: All distances on this plat are measured unless otherwise noted.

Binkley
LAND SURVEYING, LLC
121 W. Auglaize Street
Wapakoneta, Ohio 45895
(419) 236-3768

CLIENT: Robert Hughes			
SURVEYED BY: T.J.S./T.E.W.	DATE: 07-16-2019	DRAWN BY: K.J.B.	CHECKED BY: K.J.B.
SCALE: 1" = 60'		PAGE 1	OF 1