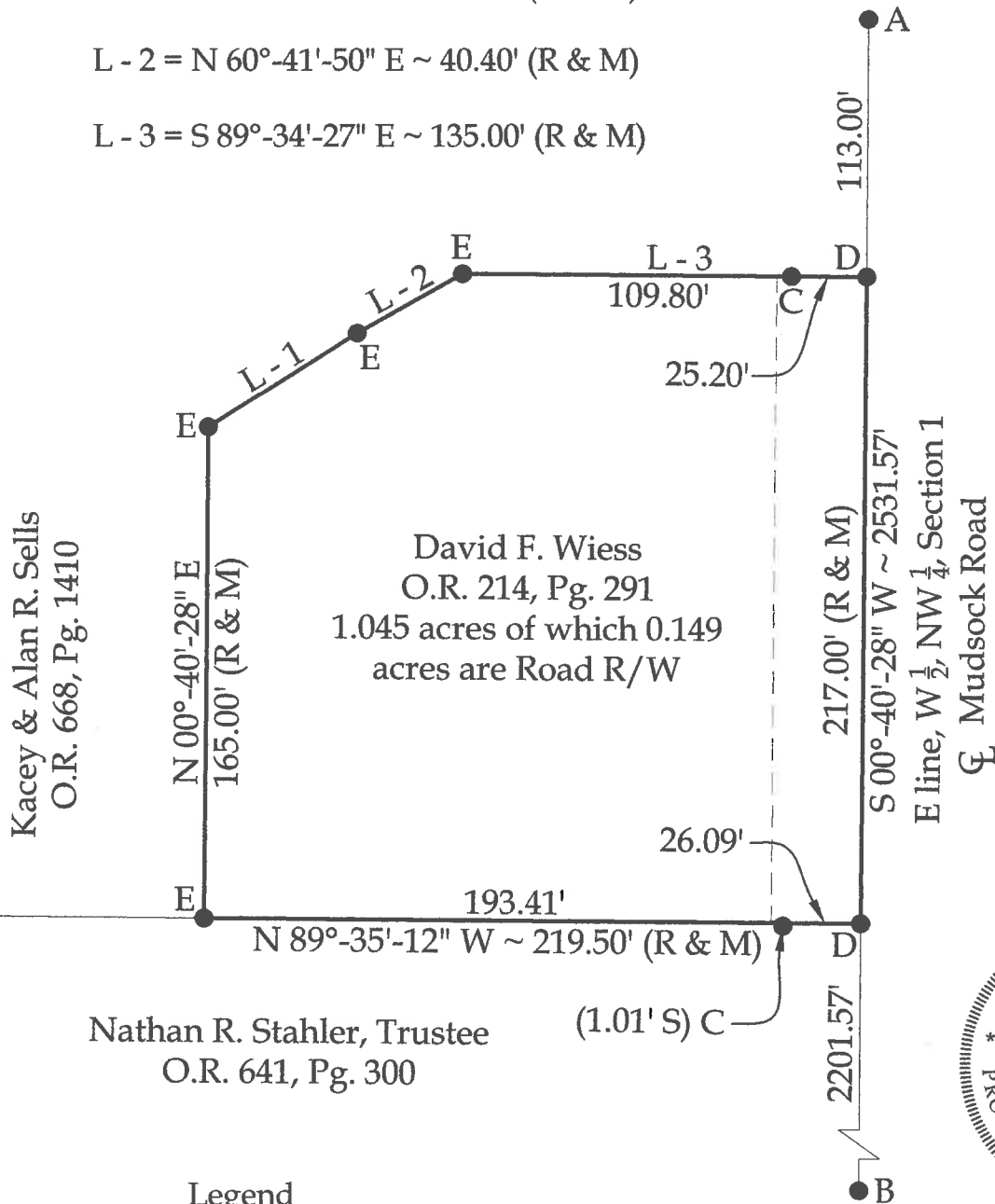


AN

## Line Data

L - 3 = S 89°-34'-27" E ~ 135.00' (R & M)



### Legend

This plat represents an actual boundary survey completed under my direct supervision on August 14, 2019.

Kyle J. Binkley, P.S. #8587

This plat is recorded in Survey Book "T", Page 692, in the Auglaize County Engineer's Office.

**BASIS OF BEARINGS** : The system of bearings for this plat and legal description is based on the Ohio State Plane - North Coordinate System NAD 83 (2011).



121 W. Auglaize Street  
Wapakoneta, Ohio 45895  
(419) 236-3768

CLIENT:

David Wiess

SURVEYED BY:  
T.I.S./T.E.W.

DATE: 08-14-2019

DRAWN BY:  
K.L.B.

CHECKED BY:  
K.I.B.

SCALE:

$$1'' = 60'$$

PAGE

OF

PAGES

1

T-692