

## Dedication of Public Right-of-Way

Survey of Parcel #B07-016-011-00 & part of Parcel #B07-083-019-00 and being a part of Lots # 722 & 723 of Roth's Addition (P.B. 1B, Pg. 144) and a part of Lot #5 of Fraction 3 in the SW  $\frac{1}{4}$  of Section 29, Town 5 South, Range 6 East, Duchouquet Township, City of Wapakoneta, Auglaize County, Ohio.  
(Prior Deeds Referenced in D.V. 121, Pg. 344 & D.V. 153, Pg. 376)

### City of Wapakoneta Planning Commission

Reviewed, approved and accepted by the City of Wapakoneta

Planning Commission on this 8 day of April 2020.

By: *Paul East* 4-8-2020  
Chairman Date

By: \_\_\_\_\_  
Chairman Date

### Acceptance of Public Right-of-Way

I hereby certify that the public right-of-way shown hereon was reviewed, approved and accepted by the City of Wapakoneta Planning Commission and that the same shall be recorded as public right-of-way.

By: *Tom Stinebaugh* 4-8-2020  
Tom Stinebaugh, Mayor Date

By: *Floyd T. Gregg* 4-8-2020  
Floyd T. Gregg, Safety/Service Director Date

### Auditor's Certificate

This Plat of Dedication for Public Right-of-Way was filed for transfer on this \_\_\_\_\_ day of \_\_\_\_\_ 2020.


\_\_\_\_\_  
Janet Schuler, Auglaize County Auditor

This plat is recorded in Survey Book "T", Page 760, in the Auglaize County Engineer's Office.




This plat and the accompanying legal description represent an actual boundary survey completed under my direct supervision on November 14, 2019.

*Kyle J. Binkley*  
Kyle J. Binkley, P.S. #8587

 121 W. Auglaize Street Wapakoneta, Ohio 45895 (419) 236-3768			
CLIENT: Wapakoneta City Schools			
SURVEYED BY: T.J.S./T.E.W.	DATE: 11-14-2019	DRAWN BY: K.J.B.	CHECKED BY: K.J.B.
SCALE: N.T.S.	PAGE 1	OF 1	PAGES 5

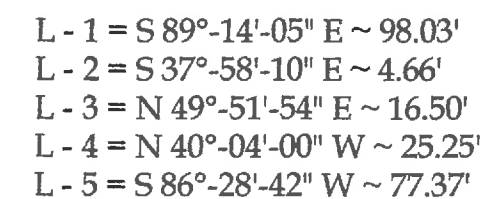
Survey of Parcel #B07-016-011-00 & part of Parcel #B07-083-019-00 and being a part of Lots # 722 & 723 of Roth's Addition (P.B. 1B, Pg. 144) and a part of Lot #5 of Fraction 3 in the SW  $\frac{1}{4}$  of Section 29, Town 5 South, Range 6 East, Duchouquet Township, City of Wapakoneta, Auglaize County, Ohio. (Prior Deeds Referenced in D.V. 121, Pg. 344 & D.V. 153, Pg. 376)

SCALE: 1" = 100'



100 50 0 100

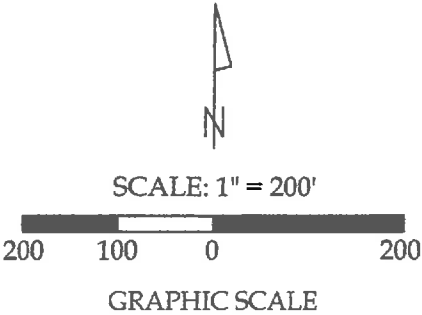
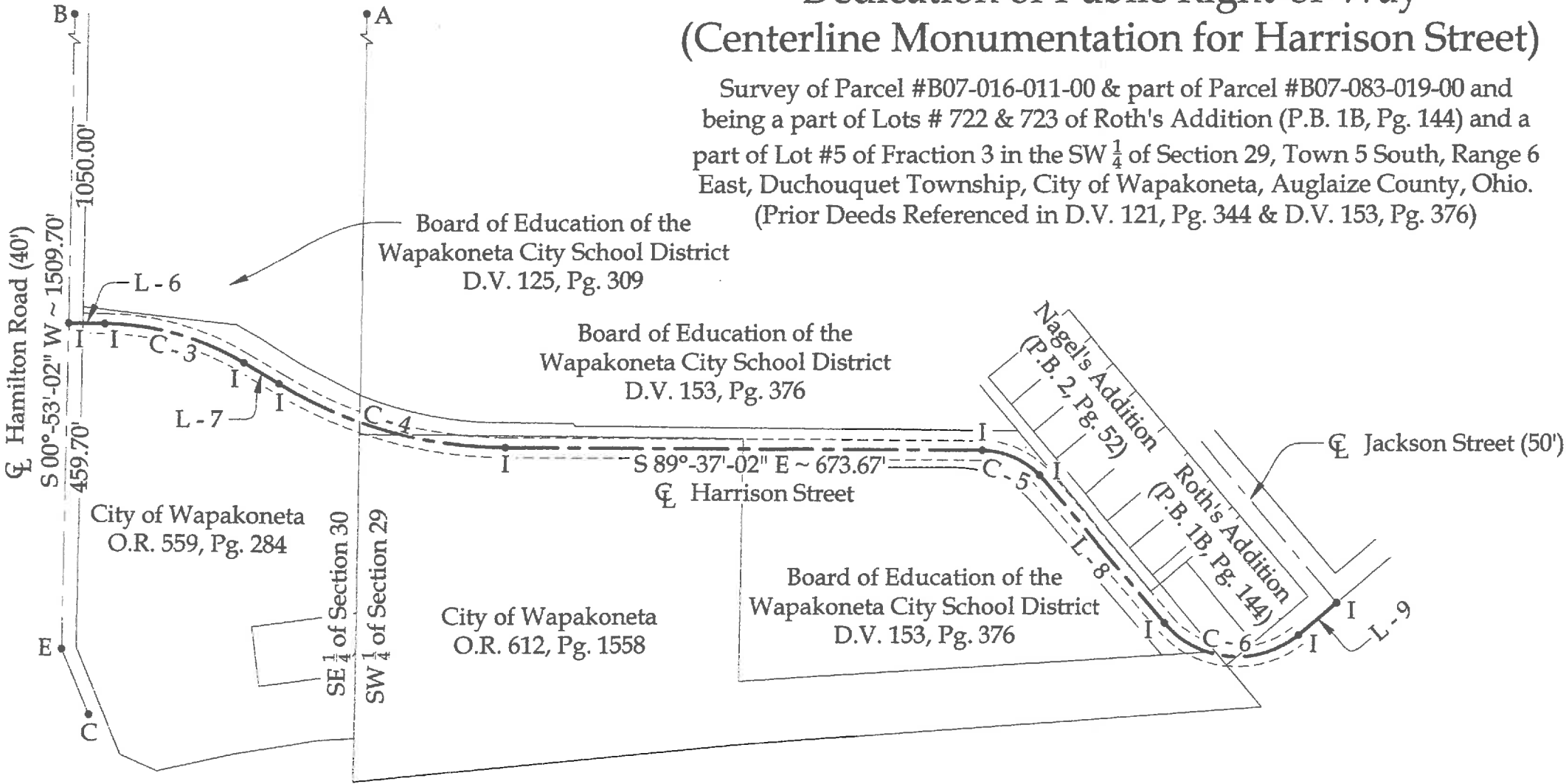
GRAPHIC SCALE



CLIENT:			
Wapakoneta City Schools			
SURVEYED BY:		DATE:	CHECKED BY:
T.J.S./T.E.W.		11-14-2019	K.J.B.
SCALE:		PAGE	PAGES
1" = 100'		2	5

# Dedication of Public Right-of-Way (Centerline Monumentation for Harrison Street)

Survey of Parcel #B07-016-011-00 & part of Parcel #B07-083-019-00 and being a part of Lots # 722 & 723 of Roth's Addition (P.B. 1B, Pg. 144) and a part of Lot #5 of Fraction 3 in the SW  $\frac{1}{4}$  of Section 29, Town 5 South, Range 6 East, Duchouquet Township, City of Wapakoneta, Auglaize County, Ohio.  
(Prior Deeds Referenced in D.V. 121, Pg. 344 & D.V. 153, Pg. 376)



## Legend

- A = Existing #5 Rebar at the NW corner of the SW  $\frac{1}{4}$  of Section 29 (centerline of Veit Street)
- B = Existing Monument Box at the intersection of the centerlines of Hamilton Road and Glynwood Road
- C = Existing Railroad Spike
- D = Remnants of an existing Mag Nail
- E = Existing #5 Rebar
- F = Existing  $\frac{1}{2}$ " Iron Pipe
- G = Set #5 Rebar
- H = Set Mag Nail
- I = Set Mag Spike

## Curve Data (Cont.)

(C - 3)  
Radius = 389.20'  
Arc Length = 208.79'  
Chord Distance = 206.30'  
Chord Bearing = S 74°-10'-42" E

(C - 5)  
Radius = 121.27'  
Arc Length = 91.58'  
Chord Distance = 89.42'  
Chord Bearing = S 66°-36'-09" E

(C - 4)  
Radius = 625.24'  
Arc Length = 338.30'  
Chord Distance = 334.19'  
Chord Bearing = S 74°-14'-11" E

(C - 6)  
Radius = 138.22'  
Arc Length = 212.35'  
Chord Distance = 192.08'  
Chord Bearing = S 84°-55'-58" E

## Line Data (Cont.)

L - 6 = S 89°-05'-27" E ~ 51.68'

L - 7 = S 58°-44'-08" E ~ 57.43'

L - 8 = S 40°-38'-00" E ~ 274.55'

L - 9 = N 49°-39'-09" E ~ 69.70'

L - 10 = S 40°-08'-06" E ~ 109.43'

L - 11 = S 62°-34'-37" E ~ 0.39'

**Binkley**  
LAND SURVEYING, LLC

121 W. Auglaize Street  
Wapakoneta, Ohio 45895  
(419) 236-3768

CLIENT: Wapakoneta City Schools			
SURVEYED BY: T.J.S./T.E.W.	DATE: 11-14-2019	DRAWN BY: K.J.B.	CHECKED BY: K.J.B.
SCALE: 1" = 200'		PAGE 3	OF PAGES 5

**Dedication of Public Right-of-Way  
LEGAL DESCRIPTION**

Being Parcel #B07-016-011-00 and part of Parcel #B07-083-019-00 and being a part of Lots #722 & 723 of Roth's Addition (P.B. 1B, Pg. 144) and a part of Lot #5 of Fraction 3 in the SW ¼ of Section 29, Town 5 South, Range 6 East, Duchouquet Township, City of Wapakoneta, Auglaize County, Ohio (Prior Deeds Referenced in D.V. 121, Pg. 344 & D.V. 153, Pg. 376), more particularly described as follows:

Commencing at an existing #5 Rebar at the NW corner of the SW ¼ of Section 29; thence S 00°-41'-54" W with the W line of the SW ¼ of Section 14, 1557.54' to the POINT OF BEGINNING, as referenced by an existing #5 Rebar at S 62°-34'-37" E, 0.39'; thence the following courses:

1. Southeasterly with a curve to the left, having a radius of 541.84', an arc length of 208.75', a chord bearing of S 79°-05'-14" E, and a chord distance of 207.47' to a set #5 Rebar;
2. S 89°-14'-05" E, 98.03' to a set Mag Nail;
3. S 37°-58'-10" E, 4.66' to a set Mag Nail;
4. S 89°-18'-32" E, 626.27' to a set #5 Rebar;
5. S 40°-08'-06" E, 296.20' to a set Mag Nail;
6. N 49°-51'-54" E, 16.50' to a #5 Rebar set at the NW corner of said Lot #723;
7. S 40°-08'-06" E with the W line of said Lot #723, 109.43' to a set #5 Rebar;
8. N 86°-13'-45" E, 68.30' to a #5 Rebar set on the S line of said Lot #722;
9. S 49°-39'-09" W with the S line of said Lots #722 & 723, 55.00' to a Mag Nail set at the SW corner of said Lot #723;
10. N 40°-04'-00" W with the W line of said Lot #723, 25.25' to a set Mag Nail;
11. S 86°-28'-42" W, 77.37' to a set #5 Rebar;
12. N 40°-47'-41" W, 283.91' to a set #5 Rebar;
13. Northwesterly with a curve to the left, having a radius of 141.61', an arc length of 121.44', a chord bearing of N 65°-21'-48" W, and a chord distance of 117.76' to a set #5 Rebar;
14. N 89°-57'-44" W, 303.37' to a set #5 Rebar;
15. N 00°-43'-09" E, 41.54' to a set Mag Nail;
16. N 89°-15'-35" W, 543.00' to a set Mag Spike;

17. N 00°-41'-54" E, 55.07' to the POINT OF BEGINNING.

The above described parcel contains 1.233 acres, more or less, and is intended for the dedication of public right-of-way.

The system of bearings for this legal description is based on Ohio State Plane – North Coordinate System NAD83 (2011). This legal description and accompanying plat represent an actual boundary survey completed under the direct supervision of Kyle J. Binkley, P.S. #8587 on November 14, 2019. All markers called for above are in place.



A handwritten signature in black ink, appearing to read "K. J. Binkley", written over a light gray horizontal line.