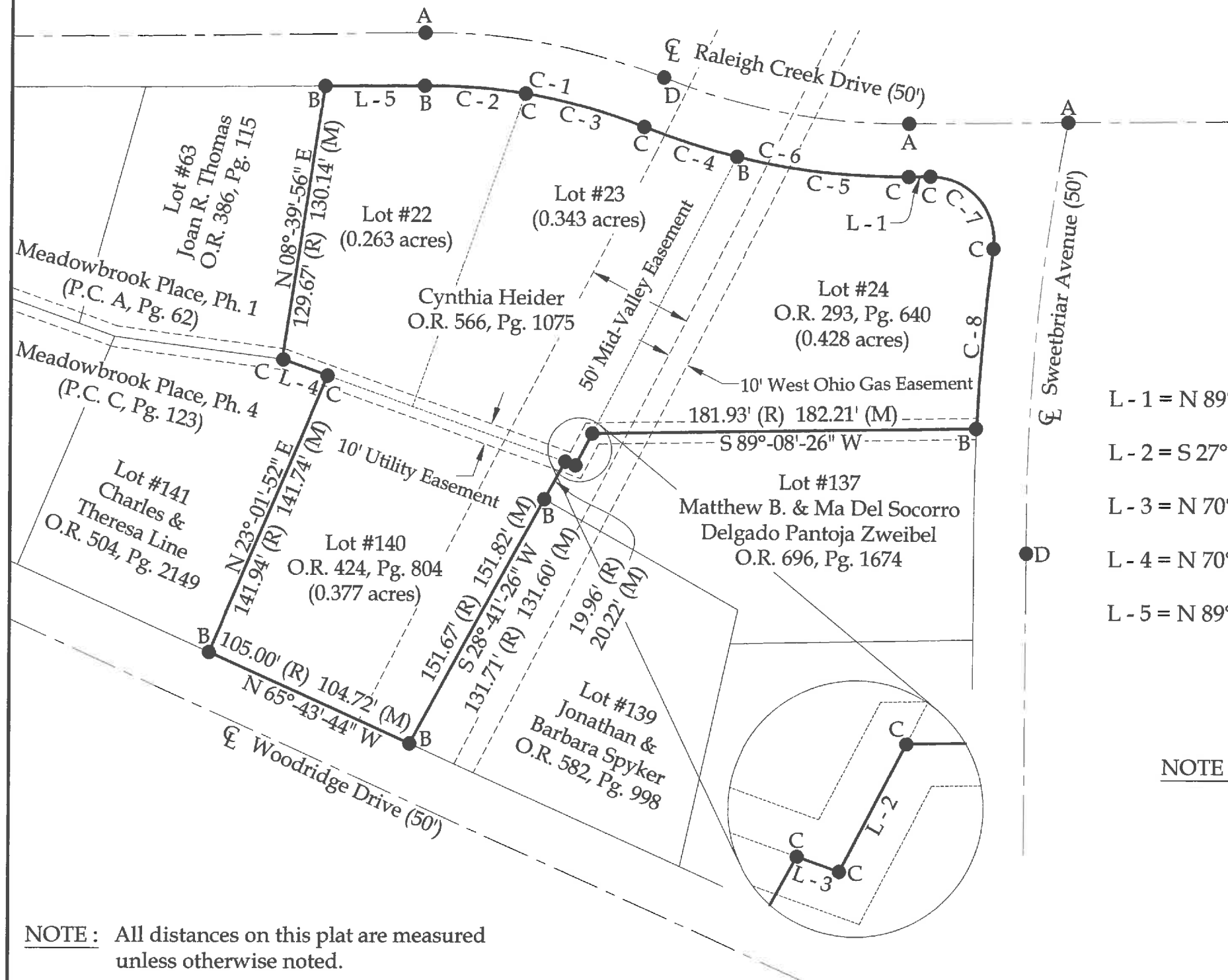


Survey of Parcels #B06-342-005-00, B06-342-006-00, & B06-342-007-00 and being Parcels #22, 23, & 24 of Meadowbrook Place, Phase 3-A (P.C. C, Pg. 83) & Parcel #B06-343-010-00 and being Lot #140 of Meadowbrook Place, Phase 4 (P.C. C, Pg. 123) and being located in the NW $\frac{1}{4}$ of Section 34, Town 4 South, Range 6 East, Duchouquet Township, Village of Cridersville, Auglaize County, Ohio.

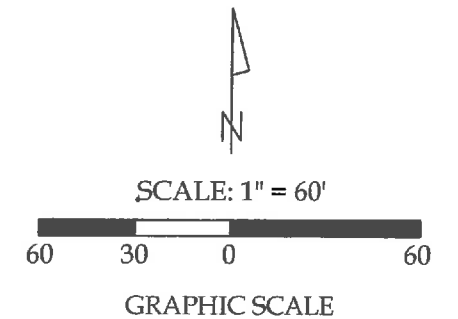
(Deeds Referenced in O.R. 293, Pg. 640; O.R. 424, Pg. 804; & O.R. 566, Pg. 1075)



NOTE : All distances on this plat are measured unless otherwise noted.

BASIS OF BEARINGS : The system of bearings for this plat and legal description is based on the Ohio State Plane - North Coordinate System NAD 83 (2011).

This plat is recorded in Survey Book "U", Page 95, in the Auglaize County Engineer's Office.



Legend

- A = Existing Cotton Gin Spindle
- B = Existing #5 Rebar
- C = Set #5 Rebar
- D = Set Mag Nail

Line Data

- L - 1 = N 89°-18'-36" E ~ 9.91' (R & M)
- L - 2 = S 27°-25'-39" W ~ 17.04' (R) 17.05' (M)
- L - 3 = N 70°-21'-04" W ~ 5.25' (R) 5.29' (M)
- L - 4 = N 70°-21'-04" W ~ 22.87' (R) 22.90' (M)
- L - 5 = N 89°-38'-56" E ~ 47.57' (R) 47.80' (M)

NOTE : See Curve Data on Sheet 2.



This plat represents an actual boundary survey completed under my direct supervision on June 25, 2020.

Kyle J. Binkley
Kyle J. Binkley, P.S. #8587

121 W. Auglaize Street Wapakoneta, Ohio 45895 (419) 236-3768			
CLIENT: Cynthia S. Heider			
SURVEYED BY: T.J.S./T.E.W.	DATE: 06-25-2020	DRAWN BY: K.J.B.	CHECKED BY: K.J.B.
SCALE: 1" = 60'		PAGE 1	OF 2

U-95

Survey of Parcels #B06-342-005-00, B06-342-006-00, & B06-342-007-00 and being Parcels #22, 23, & 24 of Meadowbrook Place, Phase 3-A (P.C. C, Pg. 83) & Parcel #B06-343-010-00 and being Lot #140 of Meadowbrook Place, Phase 4 (P.C. C, Pg. 123) and being located in the NW $\frac{1}{4}$ of Section 34, Town 4 South, Range 6 East, Duchouquet Township, Village of Cridersville, Auglaize County, Ohio.

(Deeds Referenced in O.R. 293, Pg. 640; O.R. 424, Pg. 804; & O.R. 566, Pg. 1075)

Curve Data

(C - 1)
Radius = 273.49'
Arc Length = 106.32' (R) 106.18' (M)
Chord Dist. = 105.85'
Chord Bearing = S 79°-34'-59" E

(C - 3)
Radius = 273.49'
Arc Length = 58.92' (R) 58.33' (M)
Chord Dist. = 58.32'
Chord Bearing = S 74°-35'-20" E

(C - 5)
Radius = 329.59'
Arc Length = 82.24' (R) 82.25' (M)
Chord Dist. = 82.04'
Chord Bearing = S 83°-37'-02" E


(C - 7)
Radius = 30.00'
Arc Length = 51.59'
Chord Dist. = 45.46'
Chord Bearing = S 41°-45'-14" E

(C - 2)
Radius = 273.49'
Arc Length = 47.40' (R) 47.53' (M)
Chord Dist. = 47.53'
Chord Bearing = S 85°-42'-42" E

(C - 4)
Radius = 329.59'
Arc Length = 45.88' (R) 46.41' (M)
Chord Dist. = 46.37'
Chord Bearing = S 72°-26'-02" E

(C - 6)
Radius = 329.59'
Arc Length = 128.12' (R) 128.66' (M)
Chord Dist. = 127.85'
Chord Bearing = S 79°-34'-59" E

(C - 8)
Radius = 1024.03'
Arc Length = 85.28' (R) 85.27' (M)
Chord Dist. = 85.25'
Chord Bearing = S 04°-54'-44" W



121 W. Auglaize Street
Wapakoneta, Ohio 45895
(419) 236-3768

CLIENT: Cynthia S. Heider			
SURVEYED BY: T.J.S./T.E.W.	DATE: 06-25-2020	DRAWN BY: K.J.B.	CHECKED BY: K.J.B.
SCALE: 1" = N.T.S.		PAGE 2	OF PAGES 2