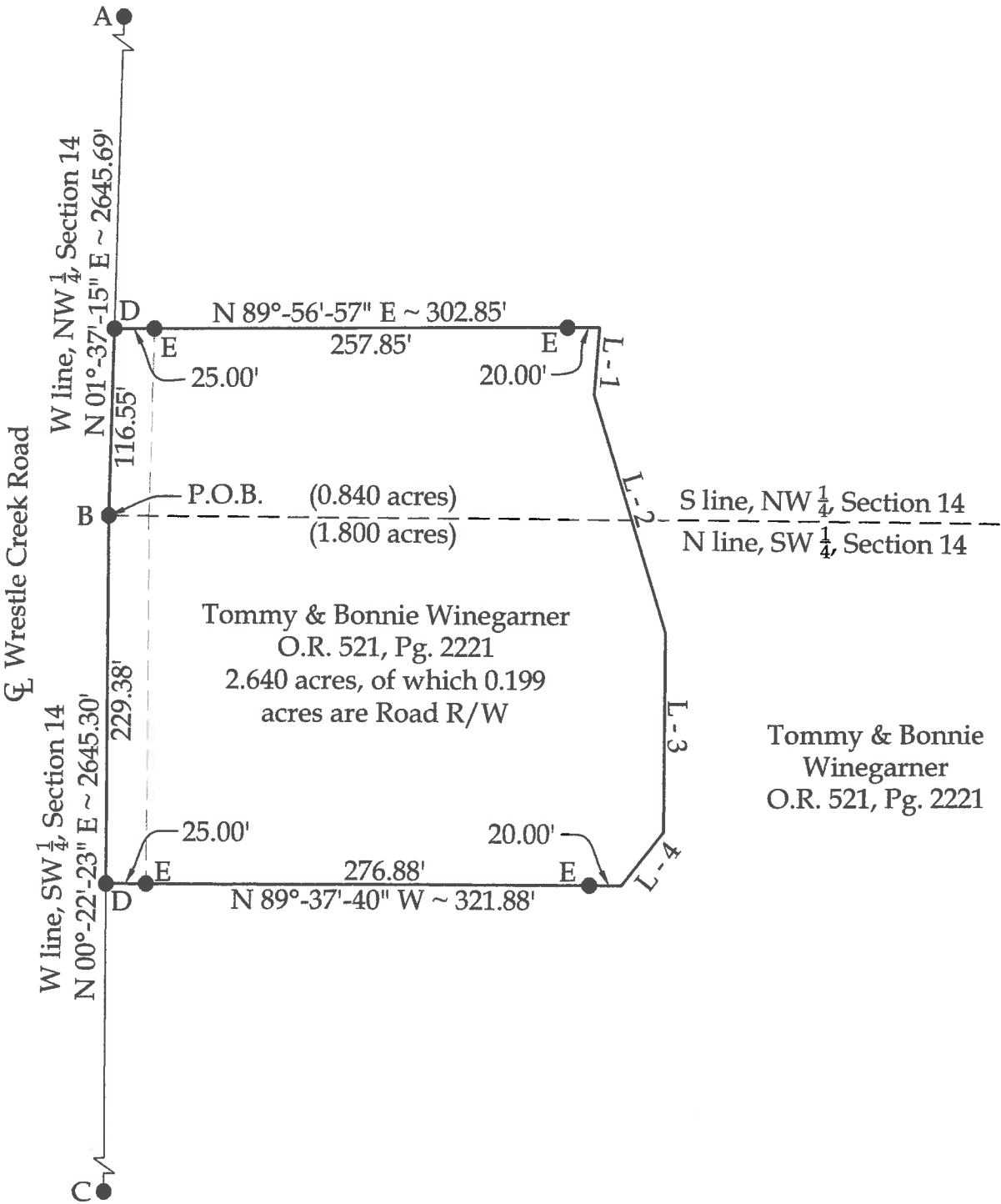
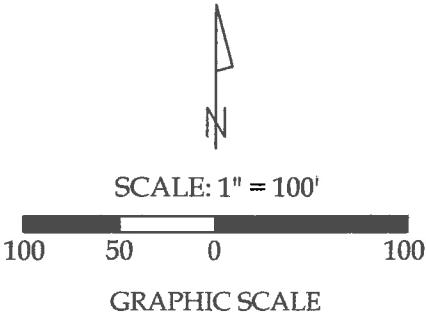


Survey of a part of Parcel #L34-014-002-00 and being a part of the NW 1/4 and SW 1/4 of
Section 14, Town 5 South, Range 7 East, Union Township, Auglaize County, Ohio.
(Prior Deed Referenced in O.R. 521, Pg. 2221)



Line Data

- L - 1 = S 04°-35'-52" W ~ 42.42'
- L - 2 = S 16°-50'-38" E ~ 154.99'
- L - 3 = S 00°-23'-33" W ~ 124.48'
- L - 4 = S 38°-34'-12" W ~ 42.38'

Legend

- A = Existing Monument Box at the NW corner of Section 14
- B = Existing Monument Box at the SW corner of the NW 1/4 of Section 14
- C = Existing Monument Box at the SW corner of Section 14
- D = Set Mag Nail
- E = Set #5 Rebar



This plat and the accompanying legal descriptions represent an actual boundary survey completed under my direct supervision on September 23, 2020.

Kyle J. Binkley
Kyle J. Binkley, P.S. #8587

CLIENT: Bonnie Winegardner			
SURVEYED BY: T.J.S./T.E.W.	DATE: 09-23-2020	DRAWN BY: K.J.B.	CHECKED BY: K.J.B.
SCALE: 1" = 100'	PAGE 1	OF 1	PAGES 2

NOTE : All distances on this plat are measured unless otherwise noted.

BASIS OF BEARINGS : The system of bearings for this plat and legal description is based on the Ohio State Plane - North Coordinate System.

This plat is recorded in Survey Book "U", Pages 181, in the Auglaize County Engineer's Office.

LEGAL DESCRIPTION

Being a part of Parcel #L34-014-002-00 and being a part of the NW ¼ and SW ¼ of Section 14, Town 5 South, Range 7 East, Union Township, Auglaize County, Ohio (Prior Deed Referenced in O.R. 521, Pg. 2221), more particularly described as follows:

Beginning at an existing Monument Box at the SW corner of the NW ¼ of Section 14; thence the following courses:

1. N 01°-37'-15" E with the W line of the NW ¼ of Section 14 (centerline of Wrestle Creek Road), 116.55' to a set Mag Nail;
2. N 89°-56'-57" E, 302.85' to a point within the banks of an open ditch, passing a set #5 Rebar at 25.00' and 282.85';
3. S 04°-35'-52" W, 42.42' to a point within the banks of an open ditch;
4. S 16°-50'-38" E, 154.99' to a point within the banks of an open ditch;
5. S 00°-23'-33" W, 124.48' to a point within the banks of an open ditch;
6. S 38°-34'-12" W, 42.38 to a point within the banks of an open ditch;
7. N 89°-37'-40" W, 321.88' to a Mag Nail set on the W line of the SW ¼ of Section 14 (centerline of Wrestle Creek Road), passing a set #5 Rebar at 20.00' and 296.88';
8. N 00°-22'-23" E with said fractional section line, 229.38' to the POINT OF BEGINNING.

The above described parcel contains 2.640 acres, more or less, of which 0.840 acres are located in the NW ¼ of Section 14, 1.800 acres are located in the SW ¼ of Section 14 and 0.199 acres are occupied by road right-of-way, subject to all legal highways and easements of record.

The system of bearings for this legal description is based on Ohio State Plane – North Coordinate System NAD83 (2011). This legal description and accompanying plat represent an actual boundary survey completed under the direct supervision of Kyle J. Binkley, P.S. #8587 on September 23, 2020. All markers called for above are in place.



A handwritten signature in black ink, appearing to read "K. Binkley", written over the seal.