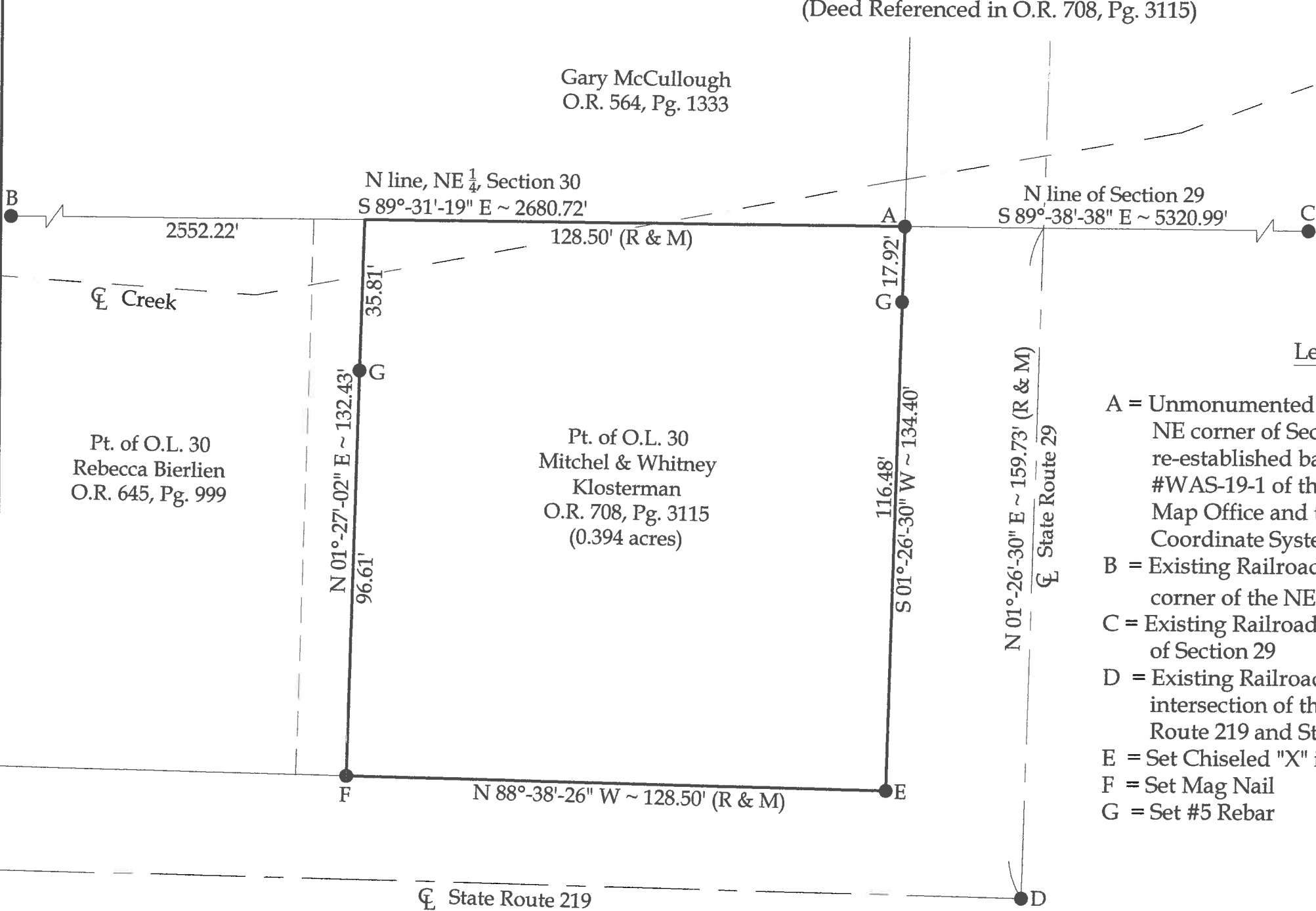
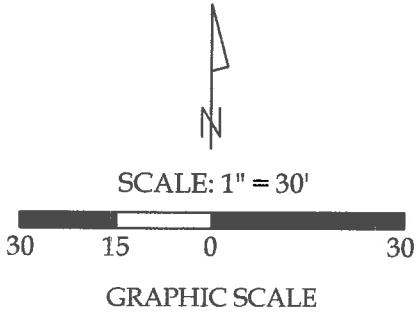


Survey of Parcel #M39-014-094-00 and being a part of Outlot #30  
to the Village of New Knoxville and being a part of the NE 1/4 of  
Section 30, Town 6 South, Range 5 East, Auglaize County, Ohio.  
(Deed Referenced in O.R. 708, Pg. 3115)




Legend

- A = Unmonumented Point of Interest at the NE corner of Section 30 as re-established based on Survey #WAS-19-1 of the Auglaize County Tax Map Office and the Auglaize County Coordinate System
- B = Existing Railroad Spike at the NW corner of the NE 1/4 of Section 30
- C = Existing Railroad Spike at the NE corner of Section 29
- D = Existing Railroad Spike at the intersection of the centerlines of State Route 219 and State Route 29
- E = Set Chiseled "X" in Concrete
- F = Set Mag Nail
- G = Set #5 Rebar



This plat represents an actual boundary survey completed under my direct supervision on June 22, 2021.

  
Kyle J. Binkley, P.S. #8587

 121 W. Auglaize Street Wapakoneta, Ohio 45895 (419) 236-3768			
CLIENT: Mitchel Klosterman			
SURVEYED BY: T.J.S./T.E.W.	DATE: 06-22-2021	DRAWN BY: K.J.B.	CHECKED BY: K.J.B.
SCALE: 1" = 30'		PAGE 1	OF 1

NOTE: All distances on this plat are measured unless otherwise noted.

BASIS OF BEARINGS: The system of bearings for this plat and legal description is based on the Ohio State Plane - North Coordinate System NAD83 (2011).

This plat is recorded in Survey Book "\_", Page \_\_, in the Auglaize County Engineer's Office.