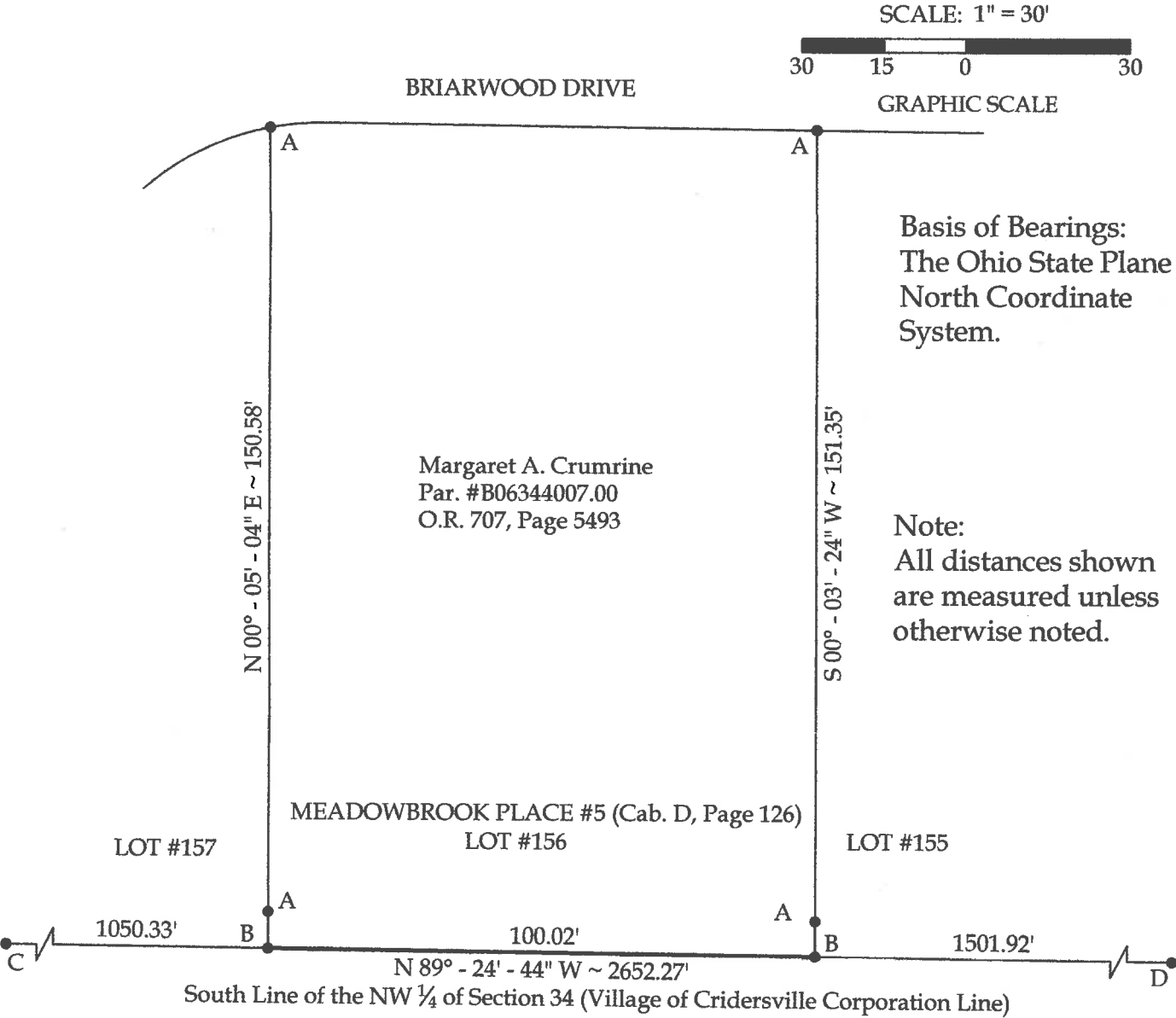


Survey of the South line of Lot #156 (Parcel #B06-344-007-00) of Meadowbrook Place #5 (Cab. D, Pg. 126), located in the NW 1/4 of Section 34, T4S, R6E, Village of Criderville, Auglaize County, Ohio.

Prior Deed Referenced in O.R. 707, Page 5493.



This plat represents an actual boundary survey completed under my direct supervision on August 10, 2021.

Brad J. Core
Brad J. Core, P.S. #8004

CORE CONSULTING		201 N. Broadway St. Spencerville, OH 45887 Phone/Fax: 419-647-6163	
A Division of Materials Testing, Inc.			
CLIENT: Maggie Crumrine			
SURVEYED BY: P.J.M.	DATE: 8-10-2021	DRAWN BY: P.J.M.	CHECKED BY: B.J.C.
SCALE: 1" = 30'		PAGE 1	OF PAGES 1