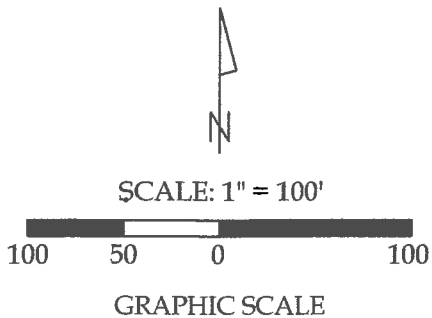
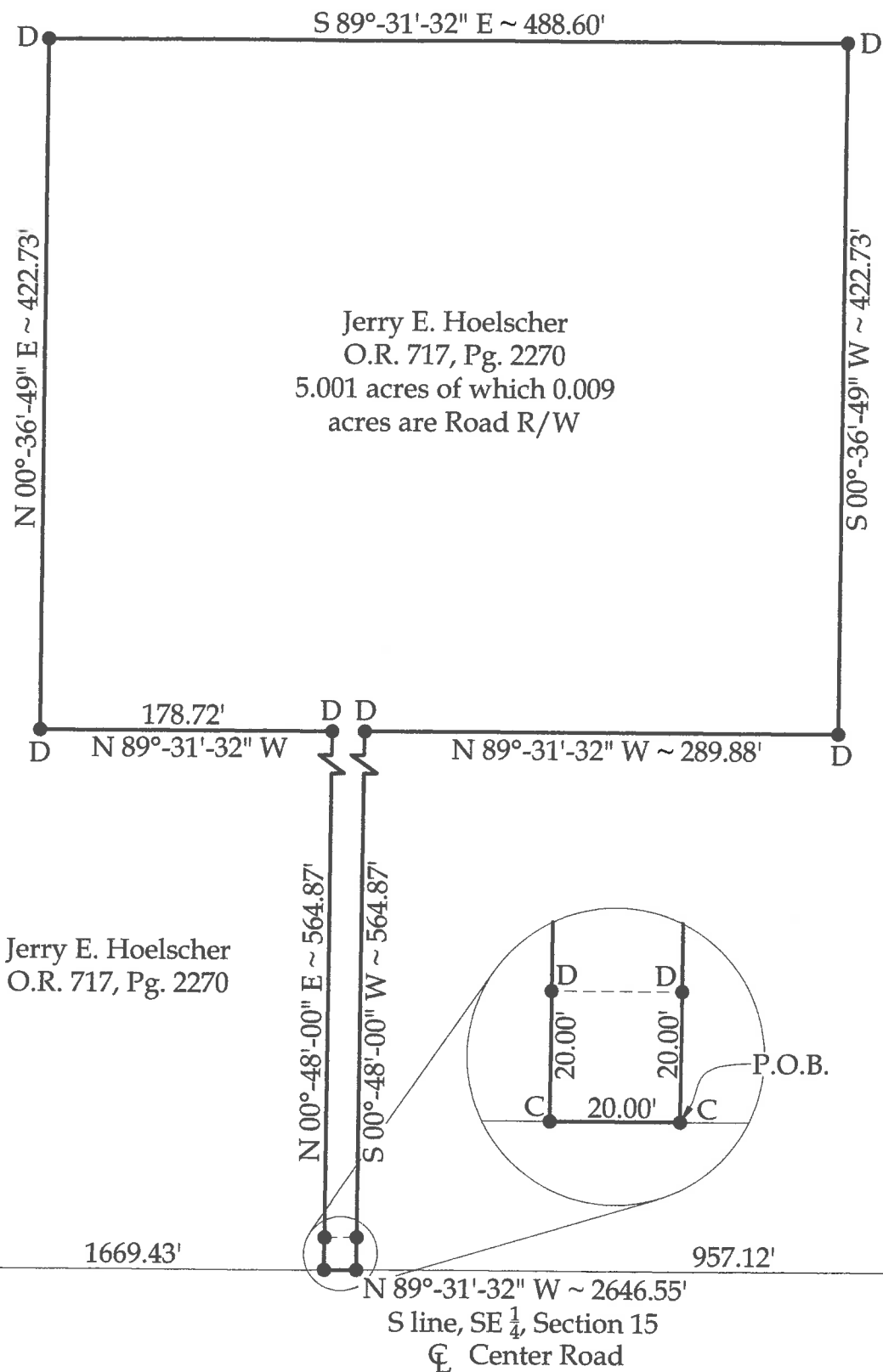


Survey of part of Parcel #M36-015-007-00 and being a part of the SE 1/4 of Section 15, Town 6 South, Range 5 East, Washington Township, Auglaize County, Ohio.
(Prior Deed Referenced in O.R. 717, Pg. 2270)



Legend

- A = Existing Monument Box at the SE corner of Section 15
- B = Existing Monument Box at the SW corner of the SE 1/4 of Section 15
- C = Set Mag Nail
- D = Set #5 Rebar



This plat and the accompanying legal description represents an actual boundary survey completed under my direct supervision on April 27, 2022.

Kyle J. Binkley
Kyle J. Binkley, P.S. #8587

 121 W. Auglaize Street Wapakoneta, Ohio 45895 (419) 236-3768			
CLIENT: Jerry Hoelscher			
SURVEYED BY: T.J.S./T.E.W.	DATE: 04-27-2022	DRAWN BY: K.J.B.	CHECKED BY: K.J.B.
SCALE: 1" = 100'		PAGE 1	OF 2

BASIS OF BEARINGS: The system of bearings for this plat and legal description is based on the Ohio State Plane - North Coordinate System NAD 83 (2011).

This plat is recorded in Survey Book "U", Page 701, in the Auglaize County Engineer's Office.

NOTE: All distances on this plat are measured unless otherwise noted.

U-701

LEGAL DESCRIPTION

Being a part of Parcel #M36-015-007-00 and being a part of the SE ¼ of Section 15, Town 6 South, Range 5 East, Washington Township, Auglaize County, Ohio (Prior Deed Referenced in O.R. 717, Pg. 2270), more particularly described as follows:

Commencing at an existing Monument Box at the SE corner of Section 15; thence N 89°-31'-32" W with the S line of the SE ¼ of Section 15 (centerline of Center Road), 957.12' to a Mag Nail set at the POINT OF BEGINNING; thence the following courses:

1. Continuing N 89°-31'-32" W with said fractional section line, 20.00' to a set Mag Nail;
2. N 00°-48'-00" E, 564.87' to a set #5 Rebar, passing a set #5 Rebar at 20.00';
3. N 89°-31'-32" W, 178.72' to a set #5 Rebar;
4. N 00°-36'-49" E, 422.73' to a set #5 Rebar;
5. S 89°-31'-32" E, 488.60' to a set #5 Rebar;
6. S 00°-36'-49" W, 422.73' to a set #5 Rebar;
7. N 89°-31'-32" W, 289.88' to a set #5 Rebar;
8. S 00°-48'-00" W, 564.87' to the POINT OF BEGINNING, passing a set #5 Rebar at 544.87'.

The above described parcel contains 5.001 acres, more or less, of which 0.009 acres are occupied by road right-of-way, subject to all legal highways and easements of record.

The system of bearings for this legal description is based on Ohio State Plane – North Coordinate System NAD83 (2011). This legal description and accompanying plat represent an actual boundary survey completed under the direct supervision of Kyle J. Binkley, P.S. #8587 on April 27, 2022. All markers called for above are in place.



A handwritten signature in black ink, appearing to read "KJ Binkley", written over a horizontal line.