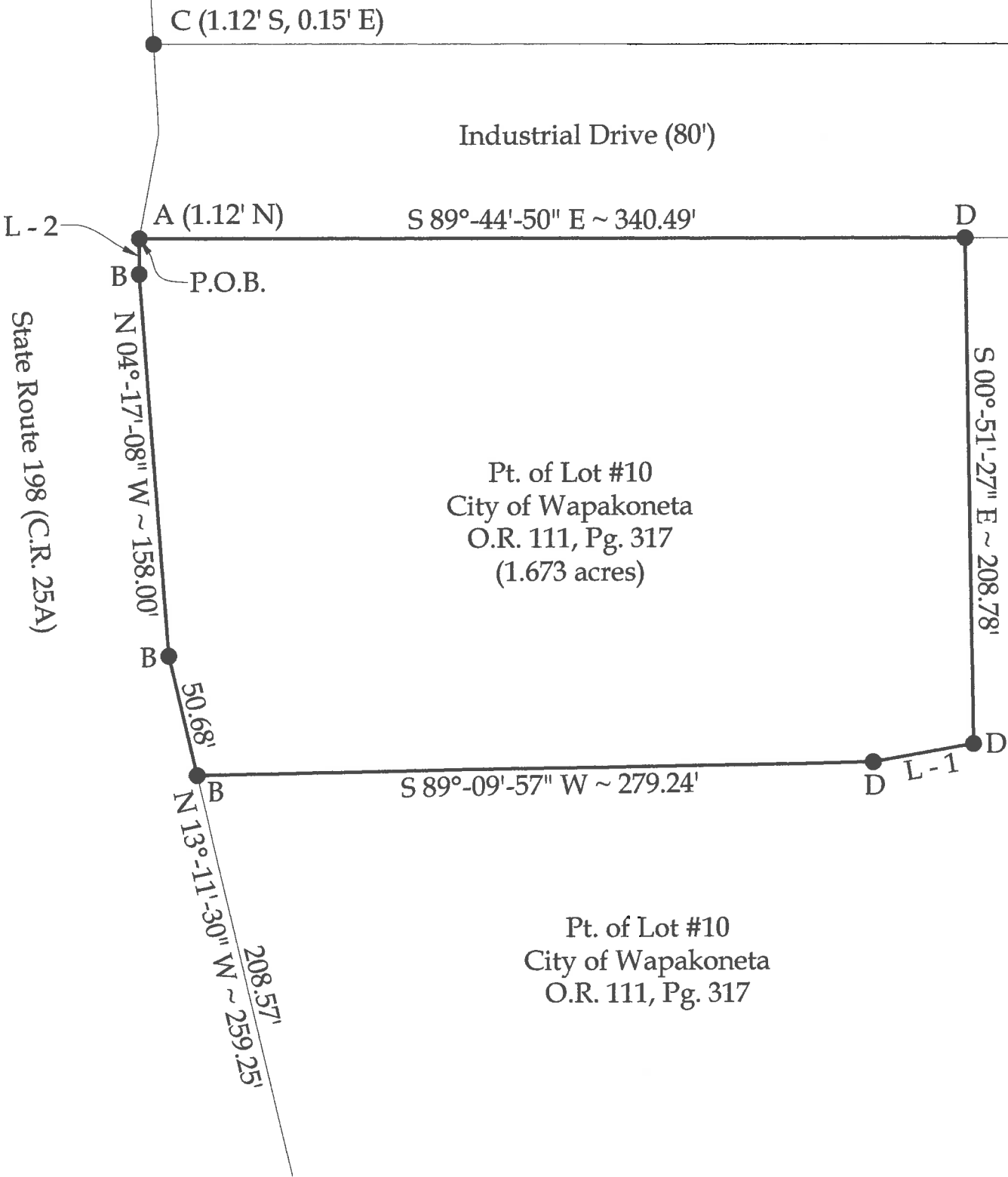


Survey of part of Parcel #B07-913-003-00 and being a part of Lot #10 of Wapakoneta Industrial Development Inc. Subdivision No. 2(P.C. A, Pg. 115) and being located in the S $\frac{1}{2}$ of Section 32, Town 5 South, Range 6 East, City of Wapakoneta, Duchouquet Township, Auglaize County, Ohio.
(Prior Deed Referenced in O.R. 111, Pg. 317)



Legend

- A = Existing 1" Iron Pin
- B = Existing Concrete Monument
- C = Existing #5 Rebar
- D = Set #5 Rebar

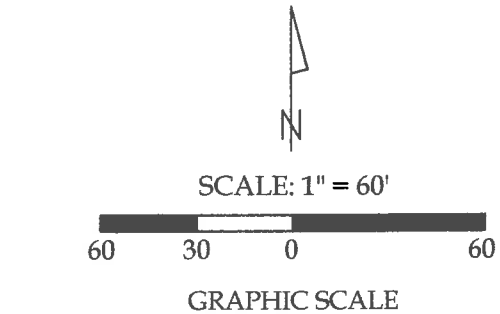
Line Data

- L - 1 = S 79°-57'-55" W ~ 41.72'
- L - 2 = N 00°-13'-07" E ~ 14.69' (R & M)

NOTE : All distances on this plat are measured unless otherwise noted.

This plat is recorded in Survey Book "U", Page 851, in the Auglaize County Engineer's Office.

BASIS OF BEARINGS : The system of bearings for this plat and legal description is based on the Ohio State Plane - North Coordinate System NAD83 (2011).



This plat and the accompanying legal descriptions represent an actual boundary survey completed under my direct supervision on August 15, 2022.

Kyle J. Binkley
Kyle J. Binkley, P.S. #8587

Binkley
LAND SURVEYING, LLC

121 W. Auglaize Street
Wapakoneta, Ohio 45895
(419) 236-3768

CLIENT: City of Wapakoneta			
SURVEYED BY: T.J.S./T.E.W.	DATE: 08-15-2022	DRAWN BY: K.J.B.	CHECKED BY: K.J.B.
SCALE: 1" = 60'		PAGE 1	OF 2

LEGAL DESCRIPTION

Being a part of Parcel #B07-913-003-00 and being a part of Lot #10 of the Wapakoneta Industrial Development Inc. Subdivision No. 2 (P.C. A, Pg. 115) and being a located in the S ½ of Section 32, Town 5 South, Range 6 East, City of Wapakoneta, Duchouquet Township, Auglaize County, Ohio (Prior Deed Referenced in O.R. 111, Pg. 317), more particularly described as follows:

Beginning at the NW corner of said Lot #10, as referenced by an existing 1" Iron Pipe at 1.12' N; thence the following courses:

1. S 89°-44'-50" E with the N line of said Lot #10 and the S line of Industrial Drive, 340.49' to a set #5 Rebar;
2. S 00°-51'-27" E, 208.78' to a set #5 Rebar;
3. S 79°-57'-55" W, 41.72' to a set #5 Rebar;
4. S 89°-09'-57" W, 279.24' to an existing Concrete Monument on the W line of said Lot #10;
5. N 13°-11'-30" W with the W line of said Lot #10, 50.68' to an existing Concrete Monument;
6. N 04°-17'-08" W with the W line of said Lot #10, 158.00' to an existing Concrete Monument;
7. N 00°-13'-07" E with the W line of said Lot #10, 14.69' to the POINT OF BEGINNING.

The above described parcel contains 1.673 acres, more or less, subject to all legal highways and easements of record.

The system of bearings for this legal description is based on Ohio State Plane – North Coordinate System NAD83 (2011). This legal description and accompanying plat represent an actual boundary survey completed under the direct supervision of Kyle J. Binkley, P.S. #8587 on August 15, 2022. All markers called for above are in place.



A handwritten signature in black ink, appearing to read "K. Binkley", written over a horizontal line.