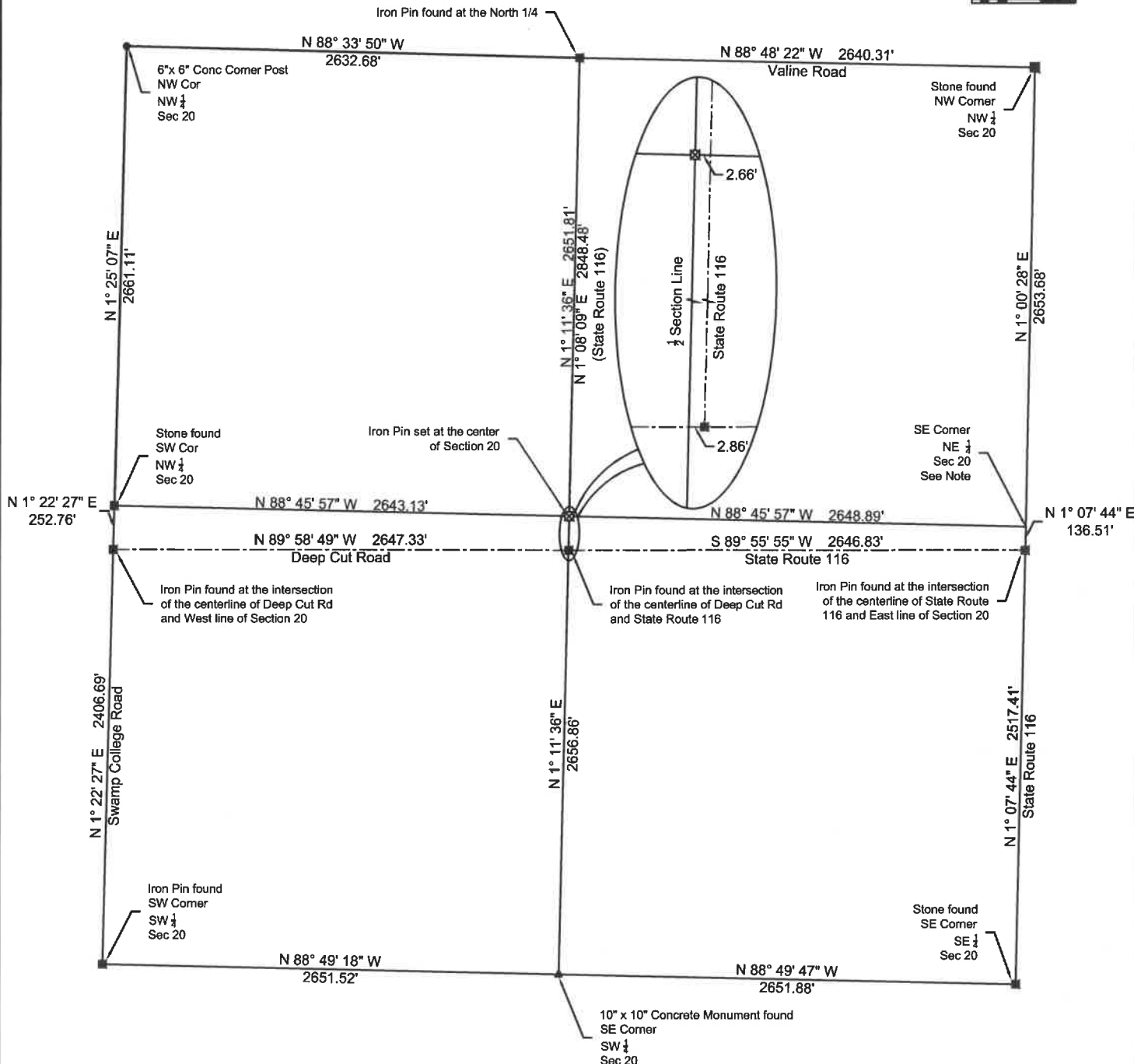


Section 20
Town-4-S, Range-4-E
Salem Twp., Auglaize County, Ohio



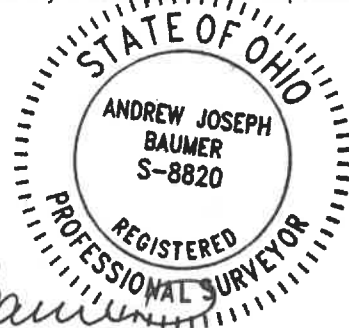
LEGEND

- County Monument Box (set)
- County Monument Box (found)
- 10" x 10" Concrete Monument (found)
- 6" x 6" Concrete Corner Post (found)

REFERENCES

- O-194
- U-757
- ODOT - 116 - 1.27 Centerline Plat
- Field Notes of Public Survey
Auglaize County

This Plat represents an actual Boundary Survey completed under my direct supervision in Septmeber 2023



BASIS OF BEARING

Basis of Bearing: Bearings are Ohio State Plane - North Coordinate System NAD83

This Plat is recorded in Survey Book "V", Page 111 in the Auglaize County Map Office

NOTES

- All distances are measured except where otherwise noted.
- The SE corner of the NW 1/4 of Section 20 was established by R Morrissey and first shown in survey O-194.

Auglaize County Engineers Office

Section 20
Town-4-S, Range-4-E
Salem Twp., Auglaize County, Ohio

DRAWN BY: RDW	SCALE: Shown
CHK'D: AJB	DATE: 9/2023
	APP'D

